



Mobility Data: Changes and Opportunities

Participating Partners:

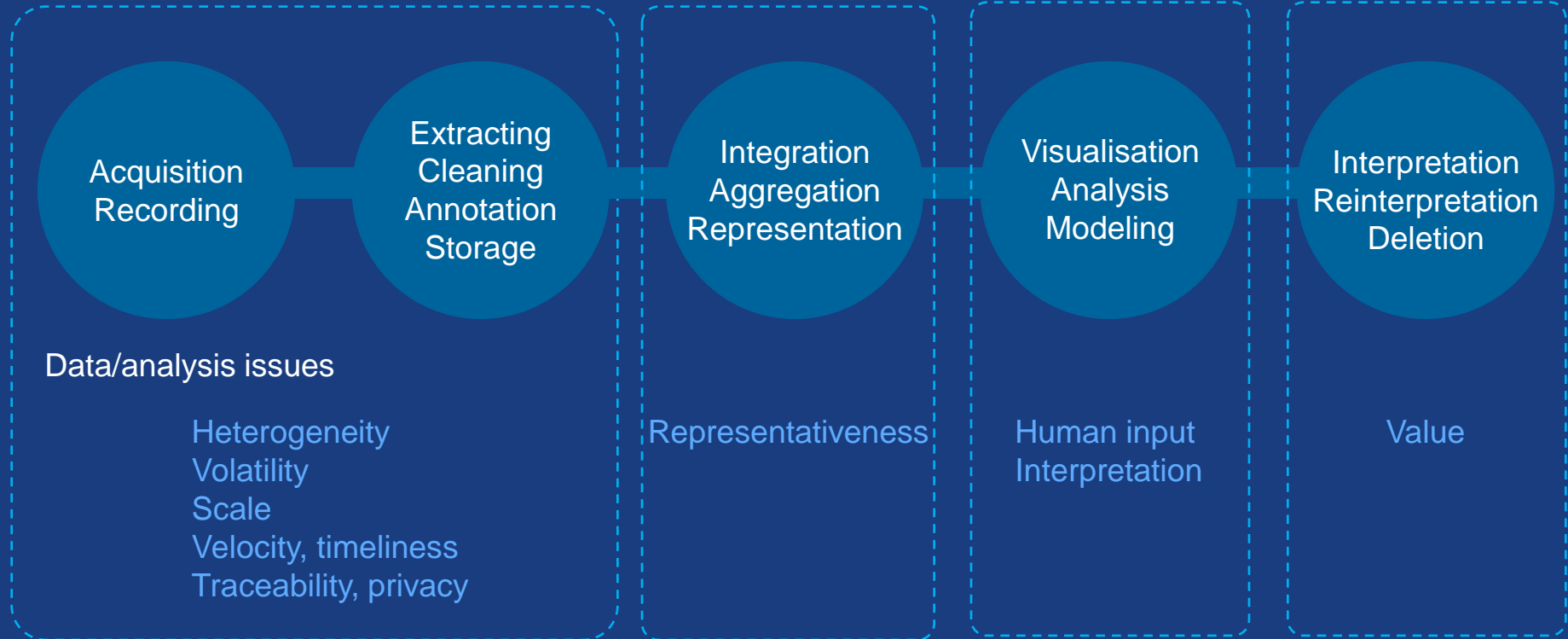
PTV Group, Kapsch TrafficCom

External Expert:

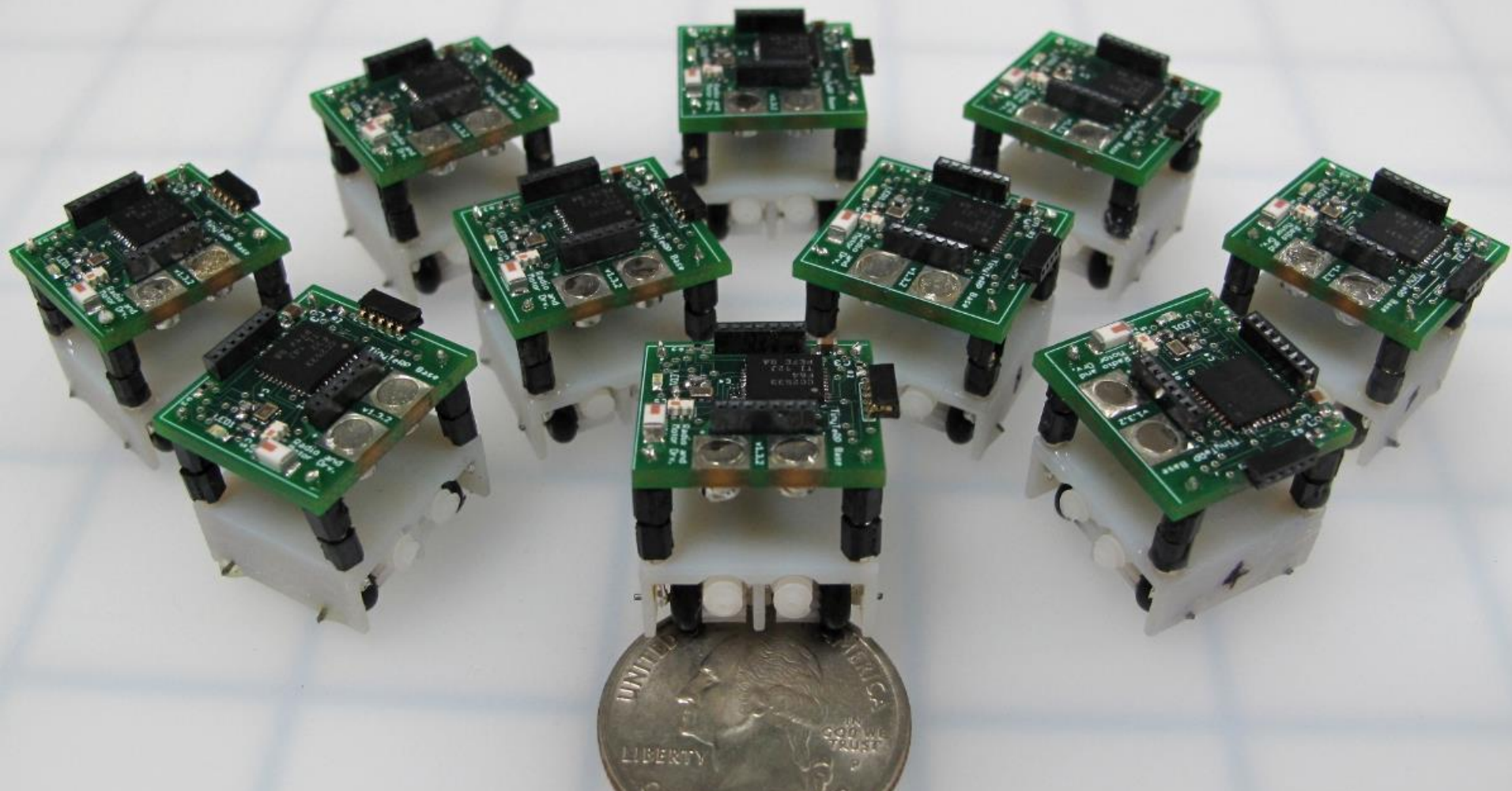
Carlo Ratti Associati

Big Data

Data Analysis Pipeline

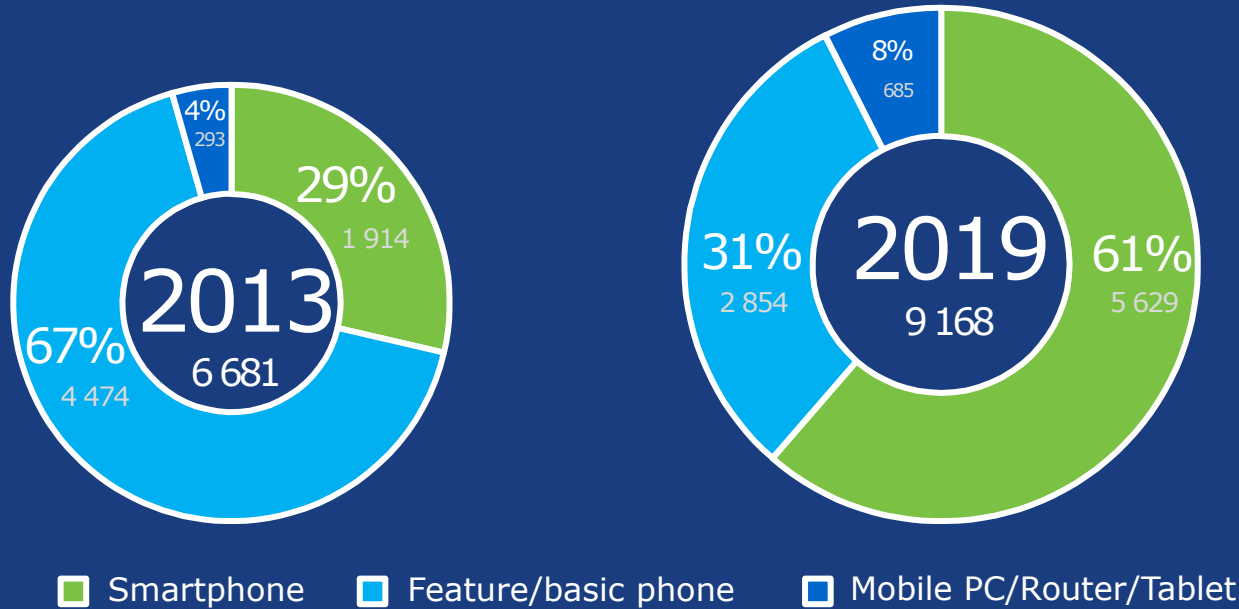


Big data has not done away with the need for **statistical rigour** since big data is not only prone to many of the **same errors and biases** in smaller datasets, it also **creates new ones**





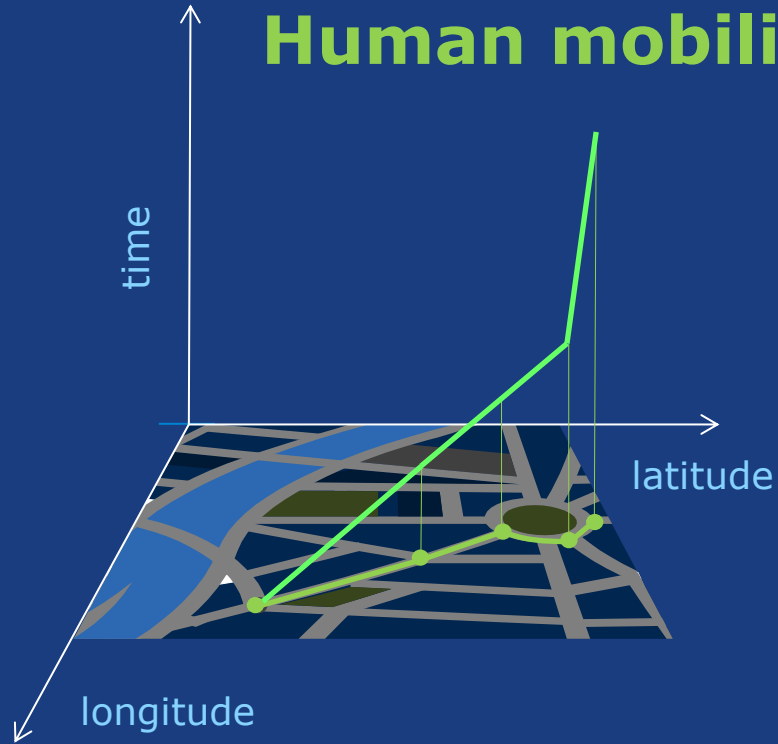
Global Mobile Subscriptions (millions)

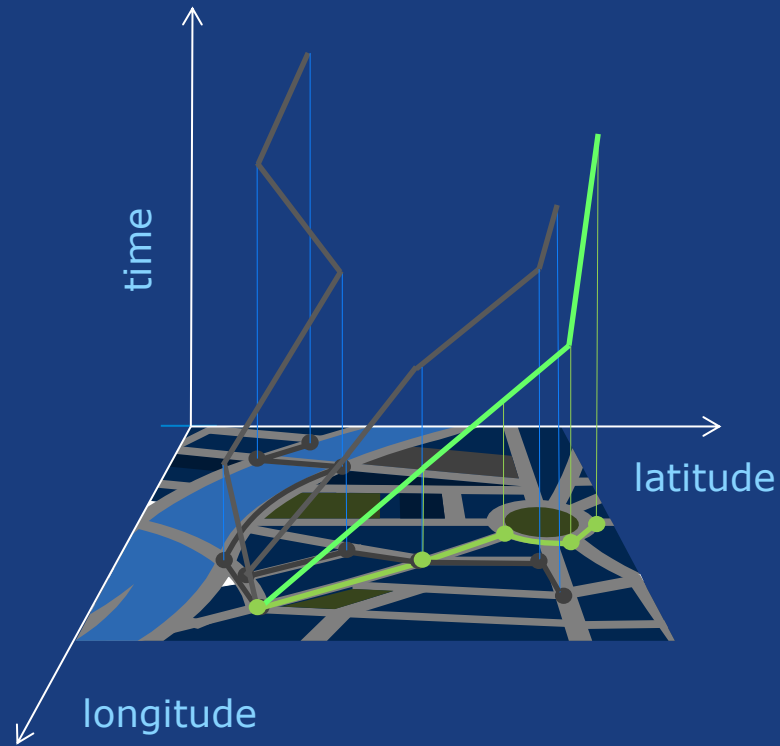


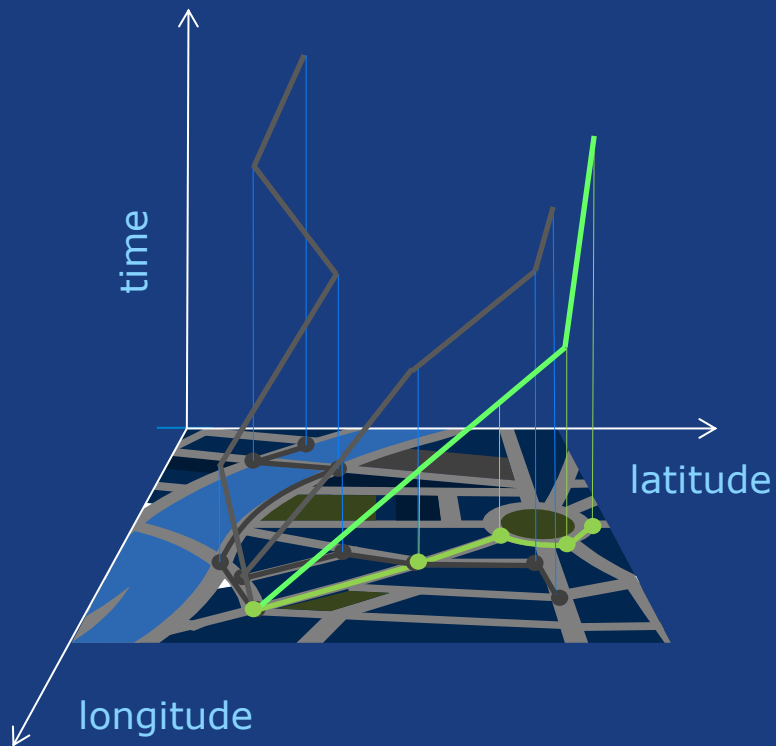
Human mobility is unique



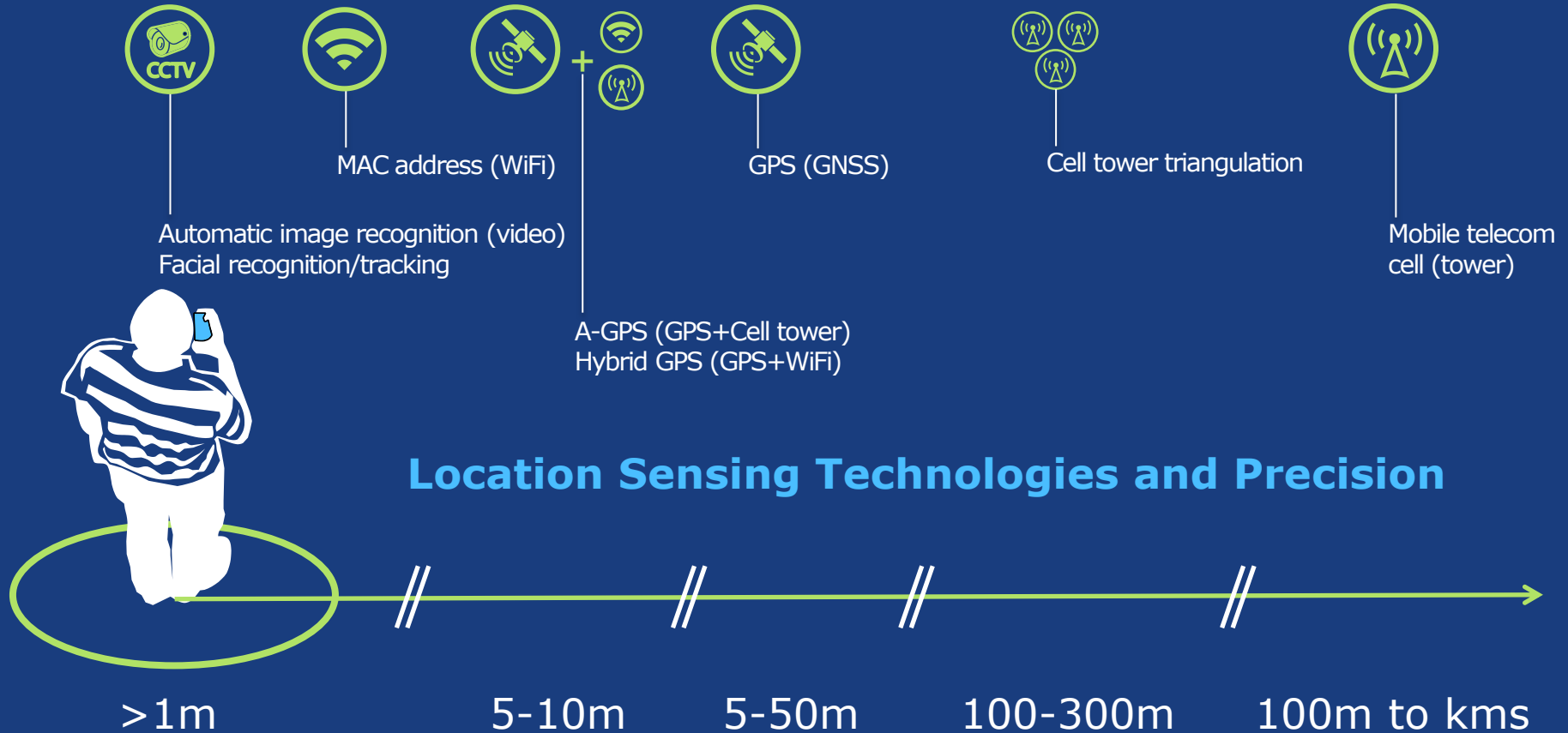
Human mobility is unique



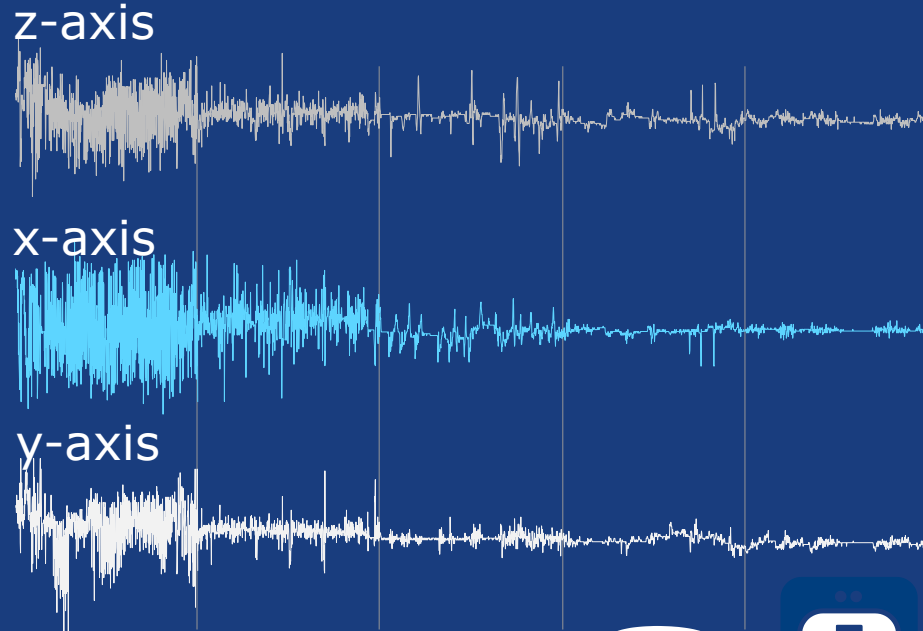
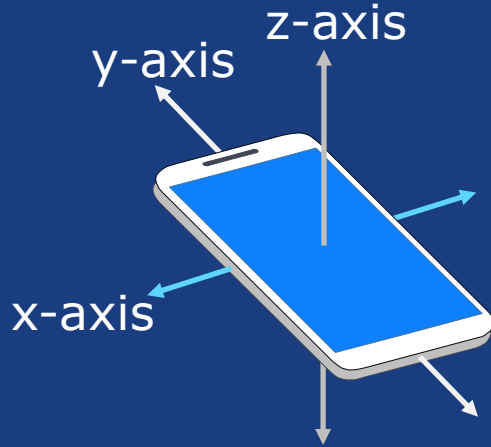




People's patterns of movement in space and time are repetitive and predictable. These **trajectories** are **powerful identifiers** – like fingerprints



Mode detection from accelerometer signals



Mobility Data: Changes and Opportunities

Why

What we did

What we found

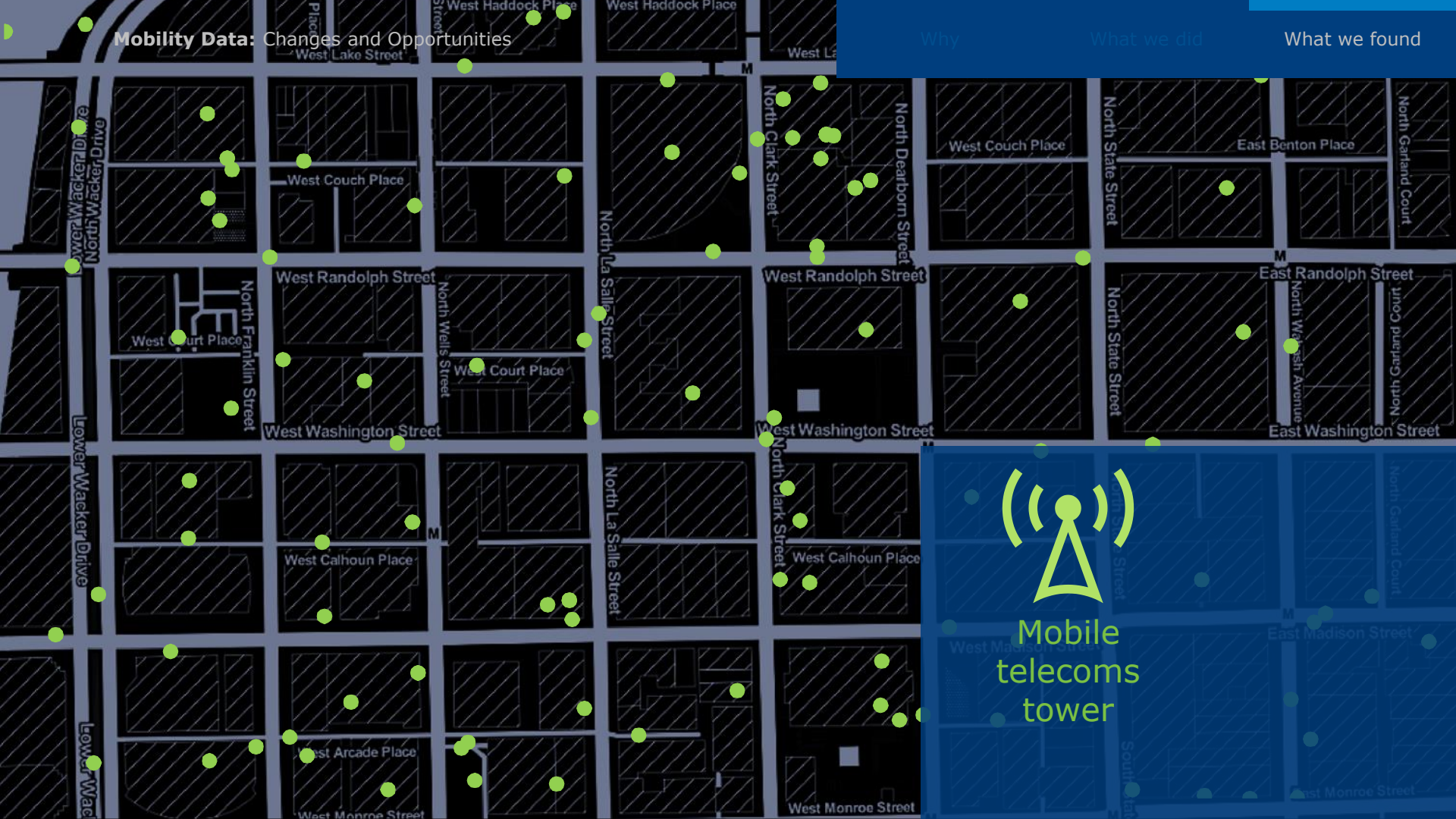


Mobility Data: Changes and Opportunities

Why

What we did

What we found



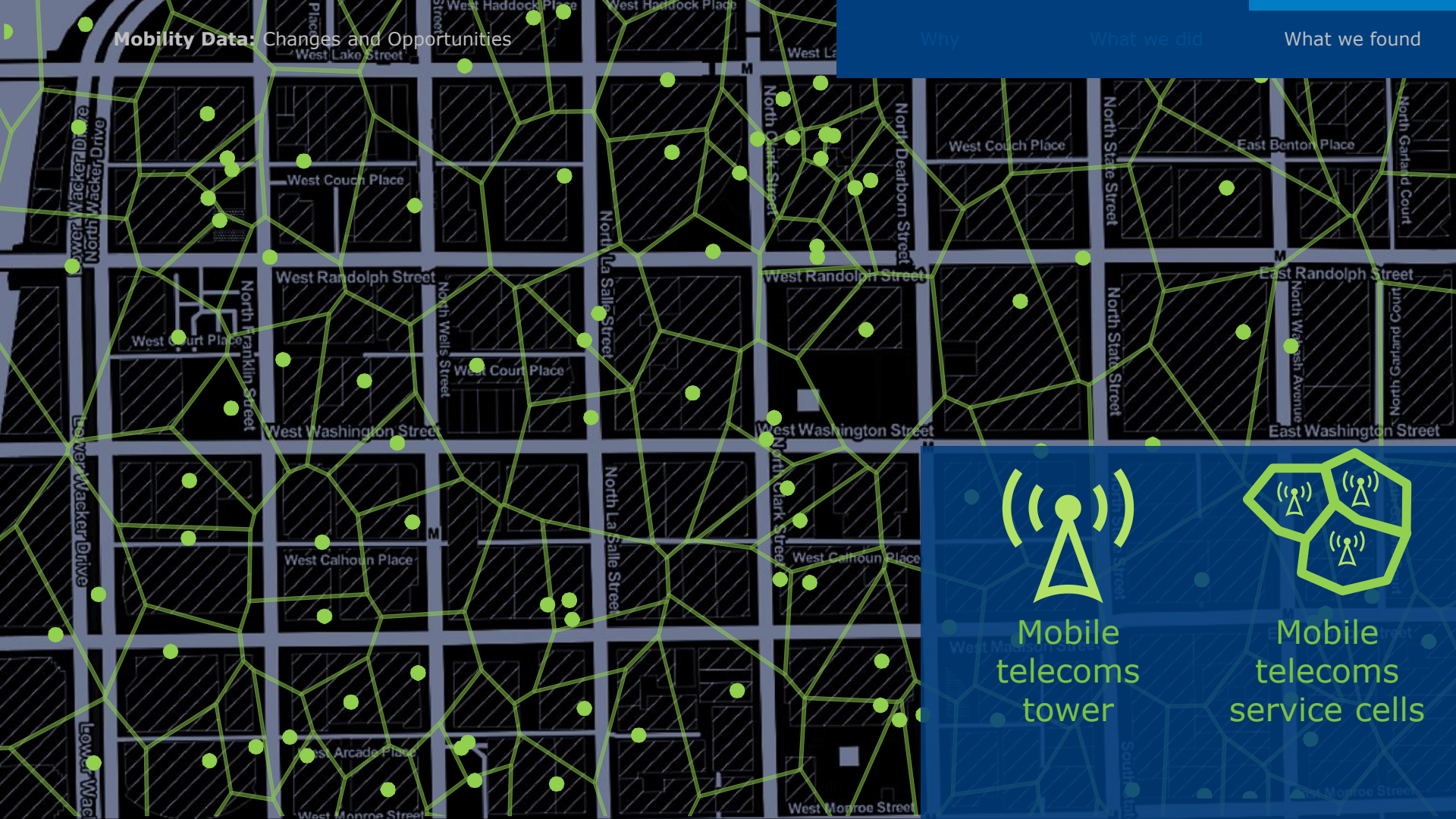
Mobile
telecoms
tower

Mobility Data: Changes and Opportunities

Why

What we did

What we found



Mobile
telecoms
tower



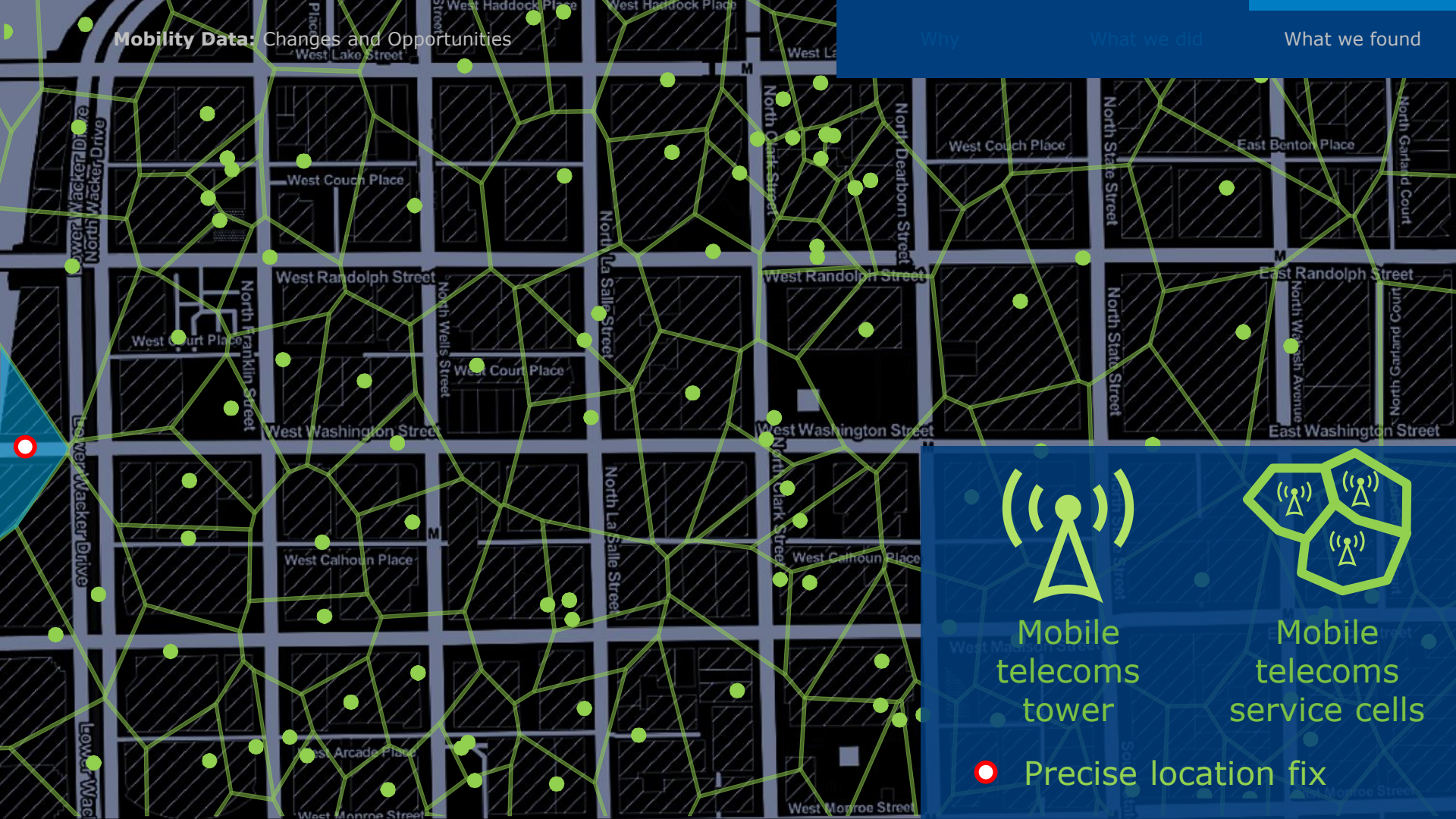
Mobile
telecoms
service cells

Mobility Data: Changes and Opportunities

Why

What we did

What we found



Mobile
telecoms
tower



Mobile
telecoms
service cells



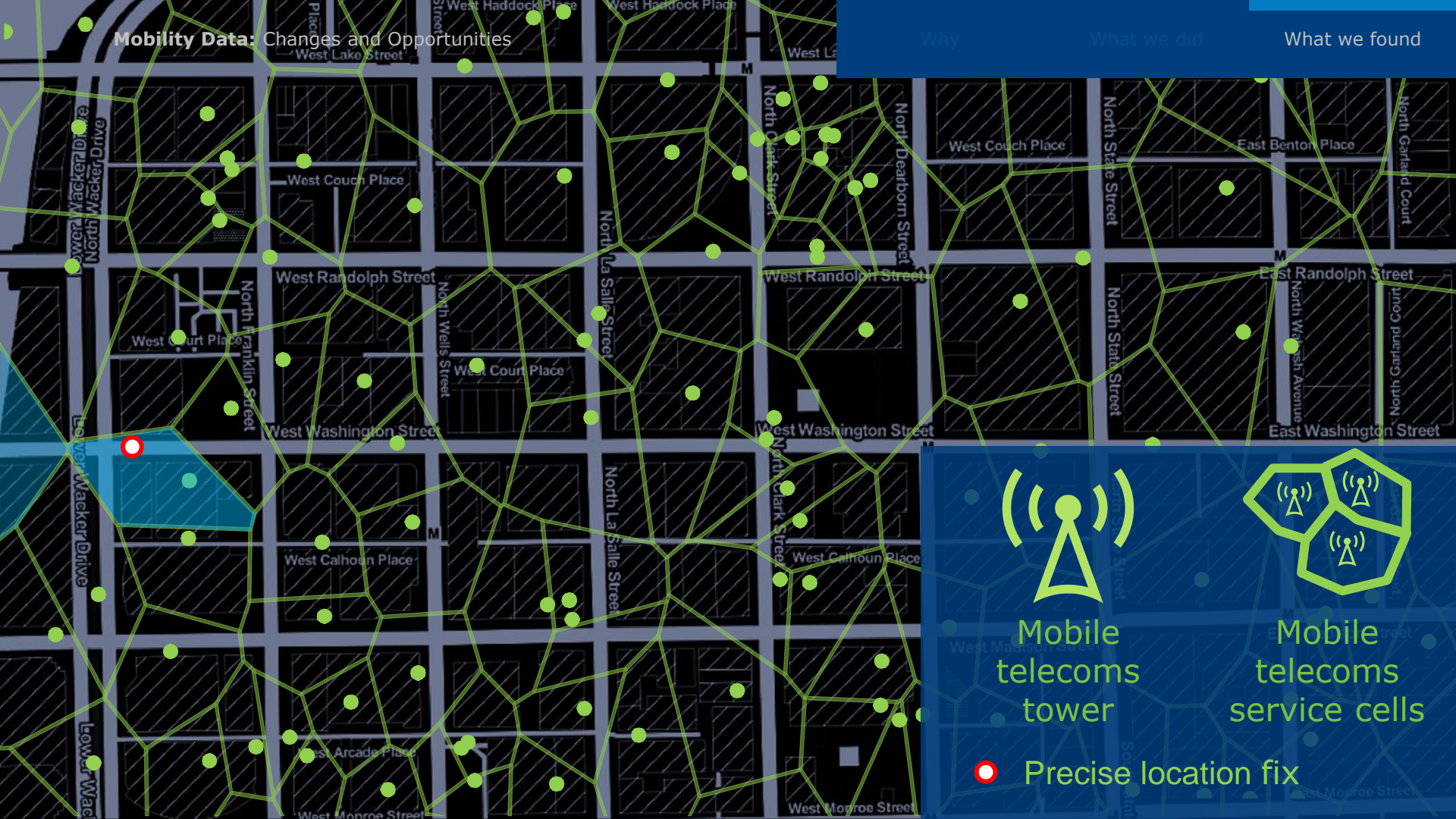
Precise location fix

Mobility Data: Changes and Opportunities

Why

What we did

What we found



Mobile
telecoms
tower



Mobile
telecoms
service cells



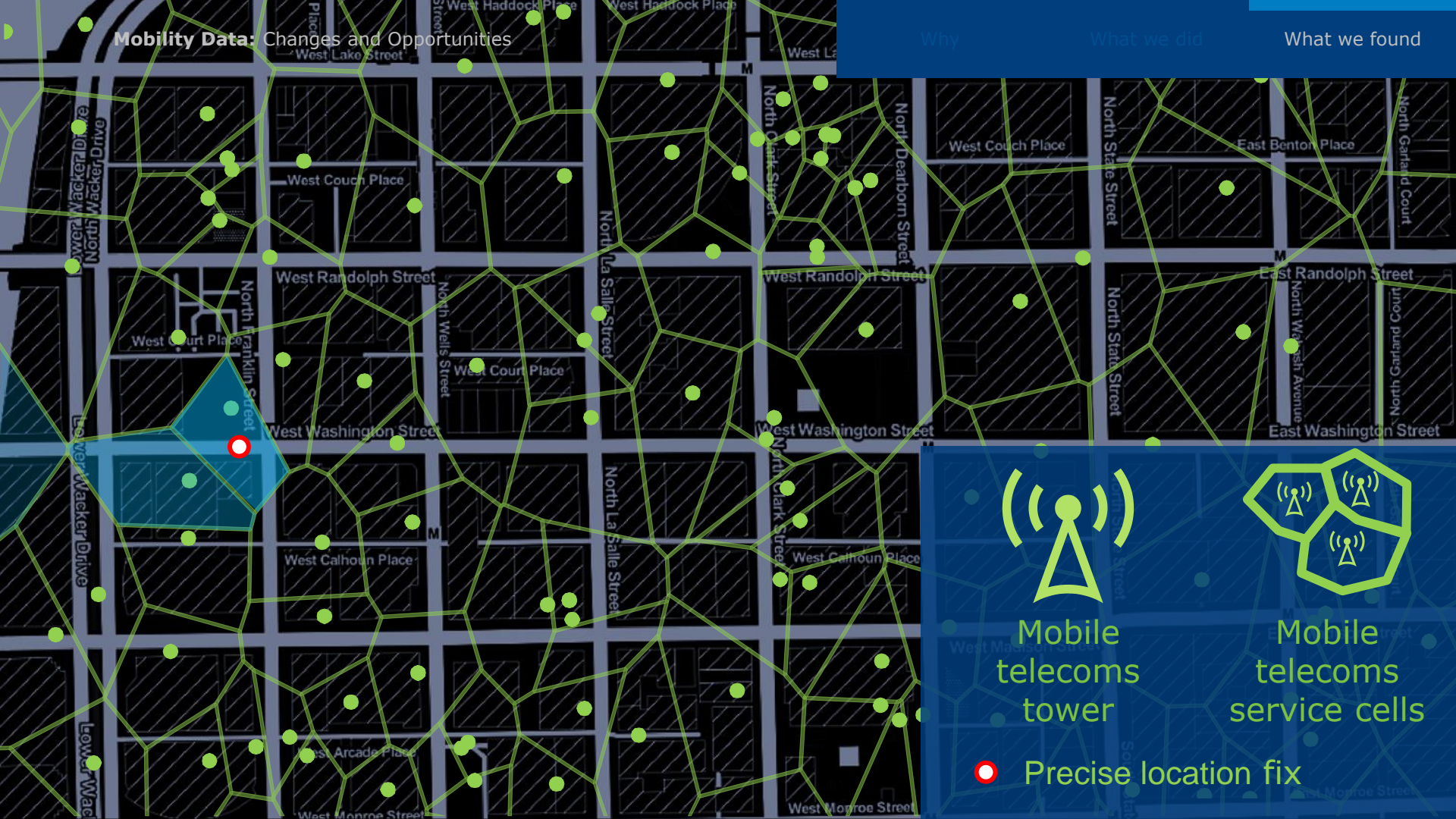
Precise location fix

Mobility Data: Changes and Opportunities

Why

What we did

What we found



Mobile
telecoms
tower



Mobile
telecoms
service cells



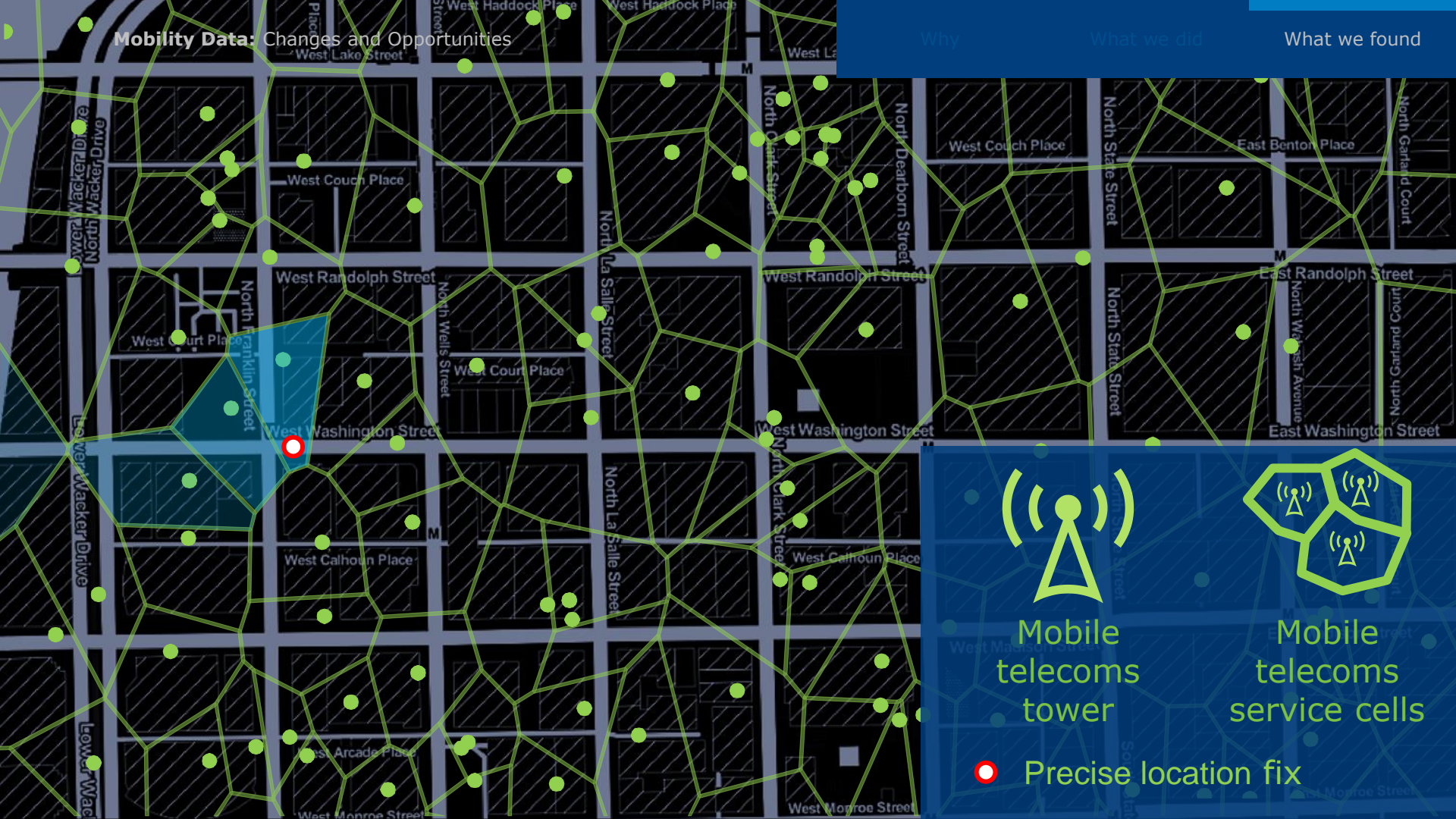
Precise location fix

Mobility Data: Changes and Opportunities

Why

What we did

What we found



Mobile
telecoms
tower



Mobile
telecoms
service cells



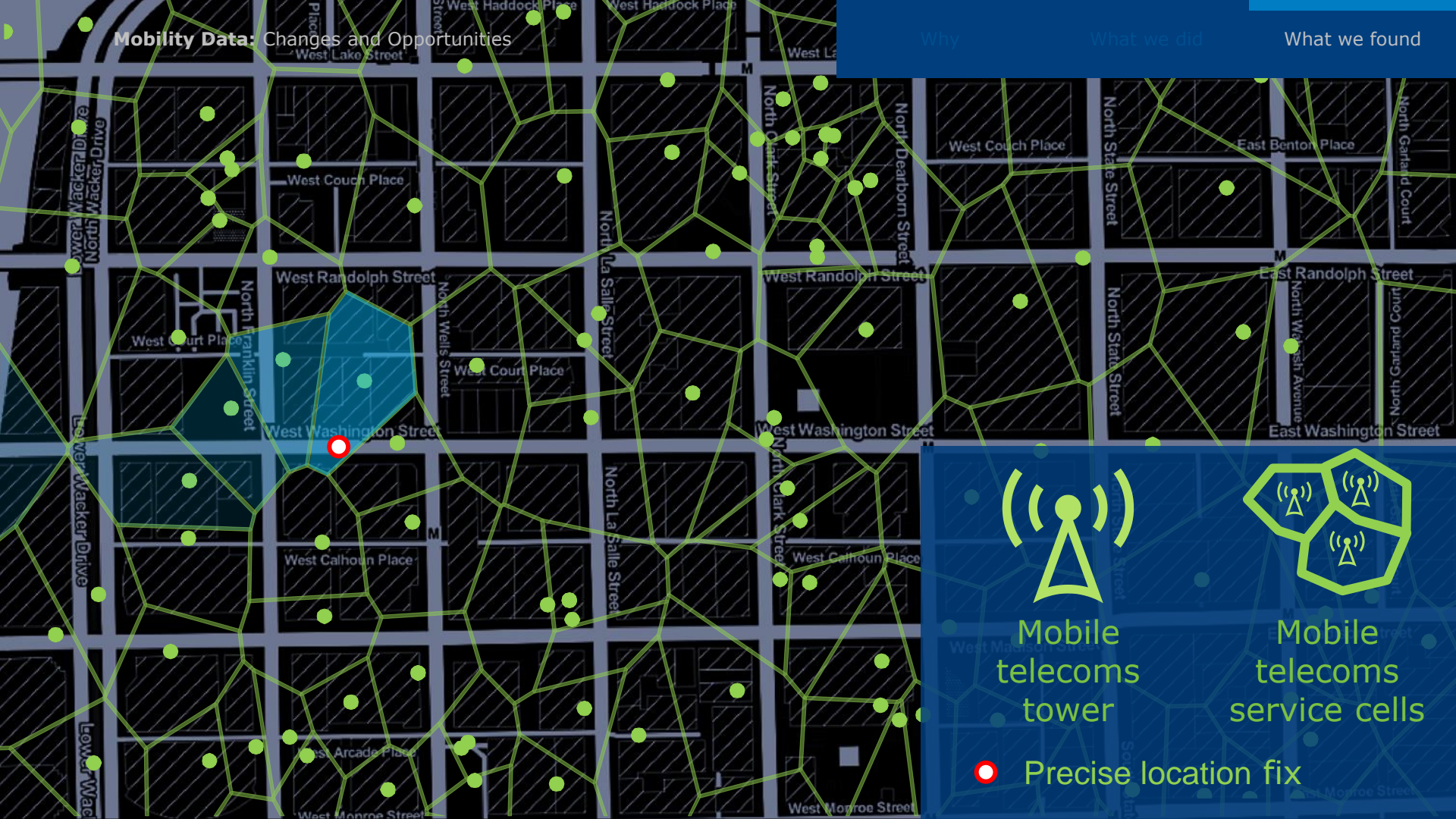
Precise location fix

Mobility Data: Changes and Opportunities

Why

What we did

What we found



Mobile
telecoms
tower



Mobile
telecoms
service cells



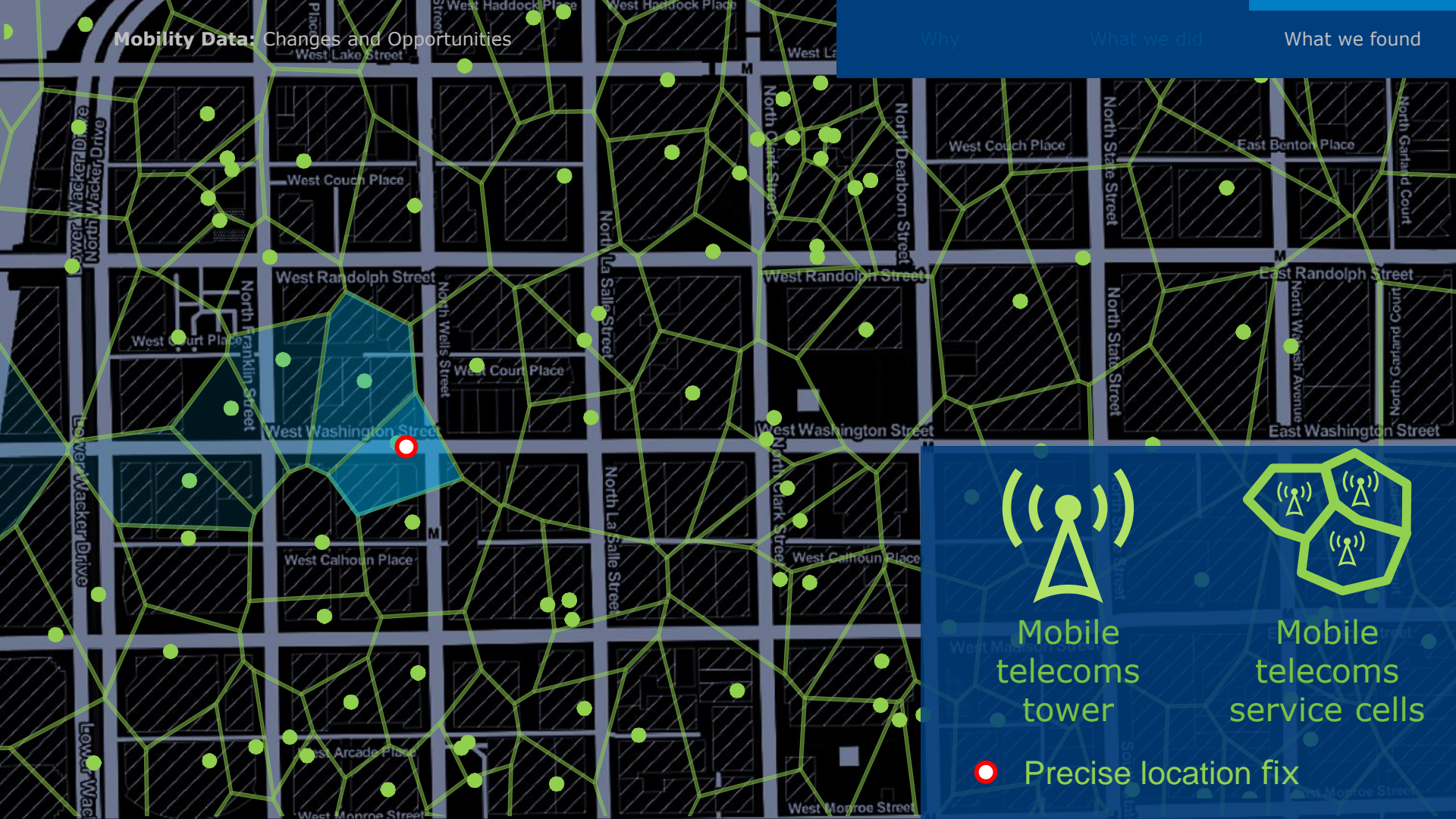
Precise location fix

Mobility Data: Changes and Opportunities

Why

What we did

What we found



Mobile
telecoms
tower



Mobile
telecoms
service cells



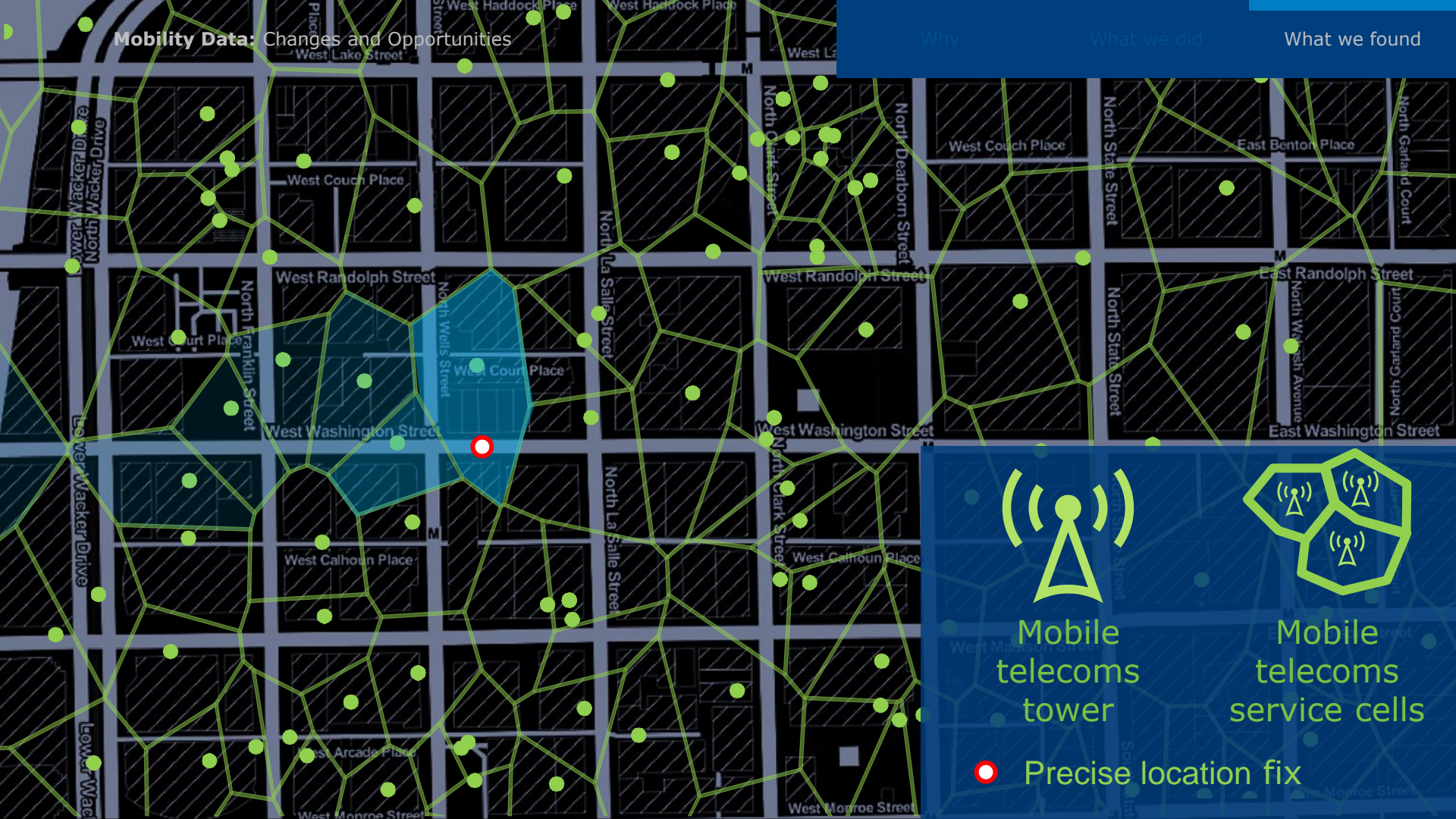
Precise location fix

Mobility Data: Changes and Opportunities

Why

What we did

What we found



Mobile
telecoms
tower



Mobile
telecoms
service cells



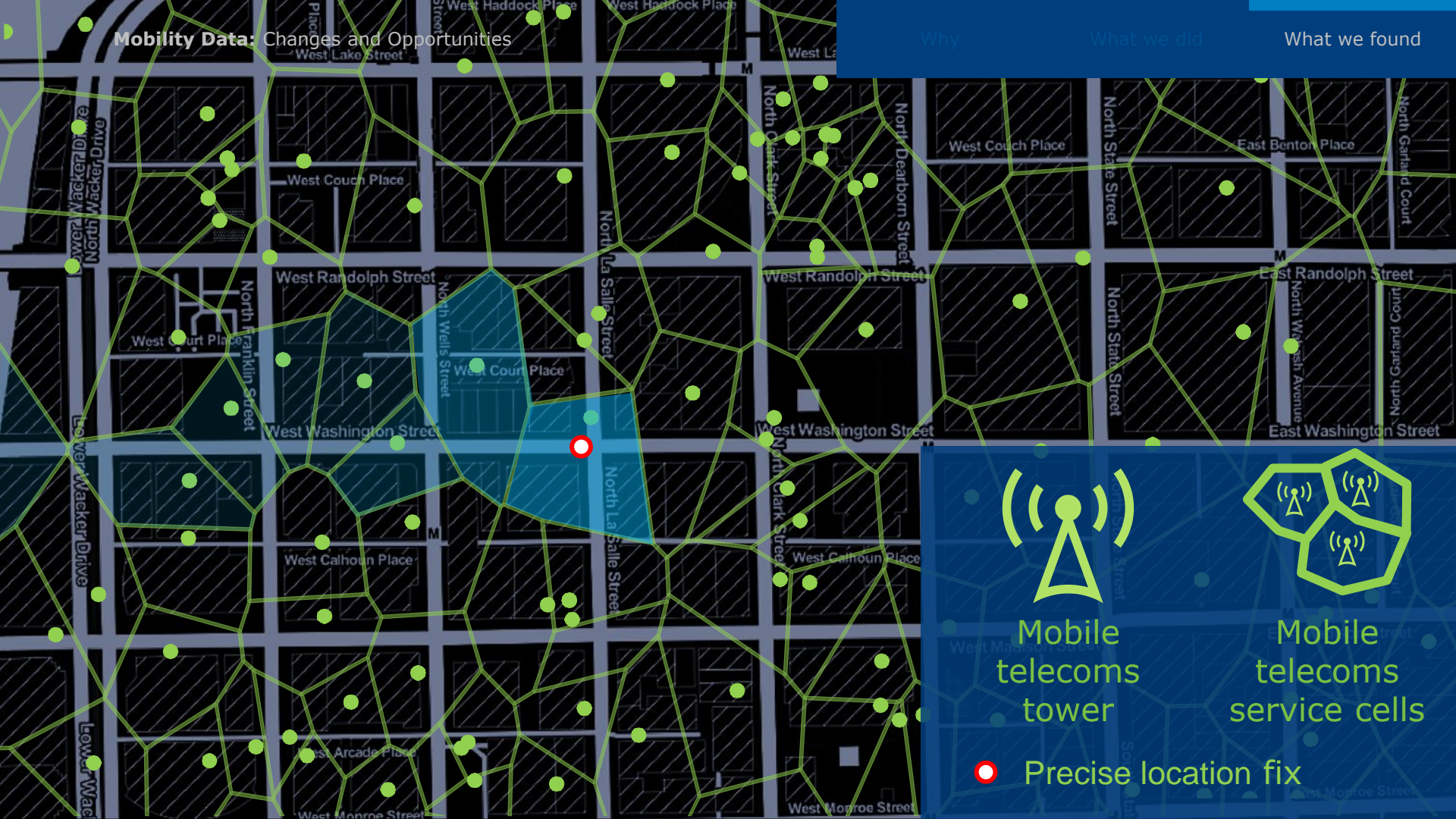
Precise location fix

Mobility Data: Changes and Opportunities

Why

What we did

What we found

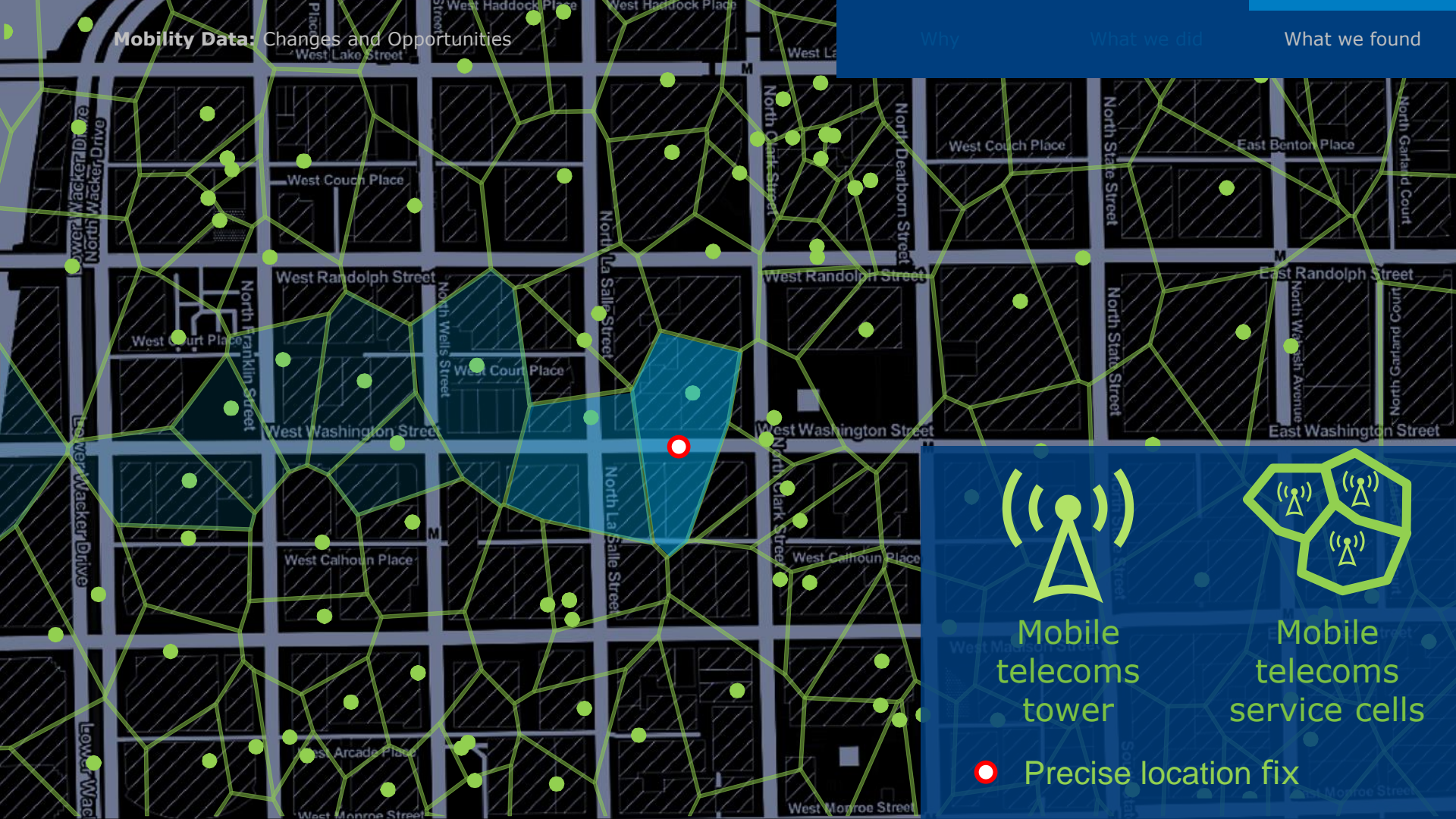


Mobility Data: Changes and Opportunities

Why

What we did

What we found



Mobile telecoms tower



Mobile telecoms service cells



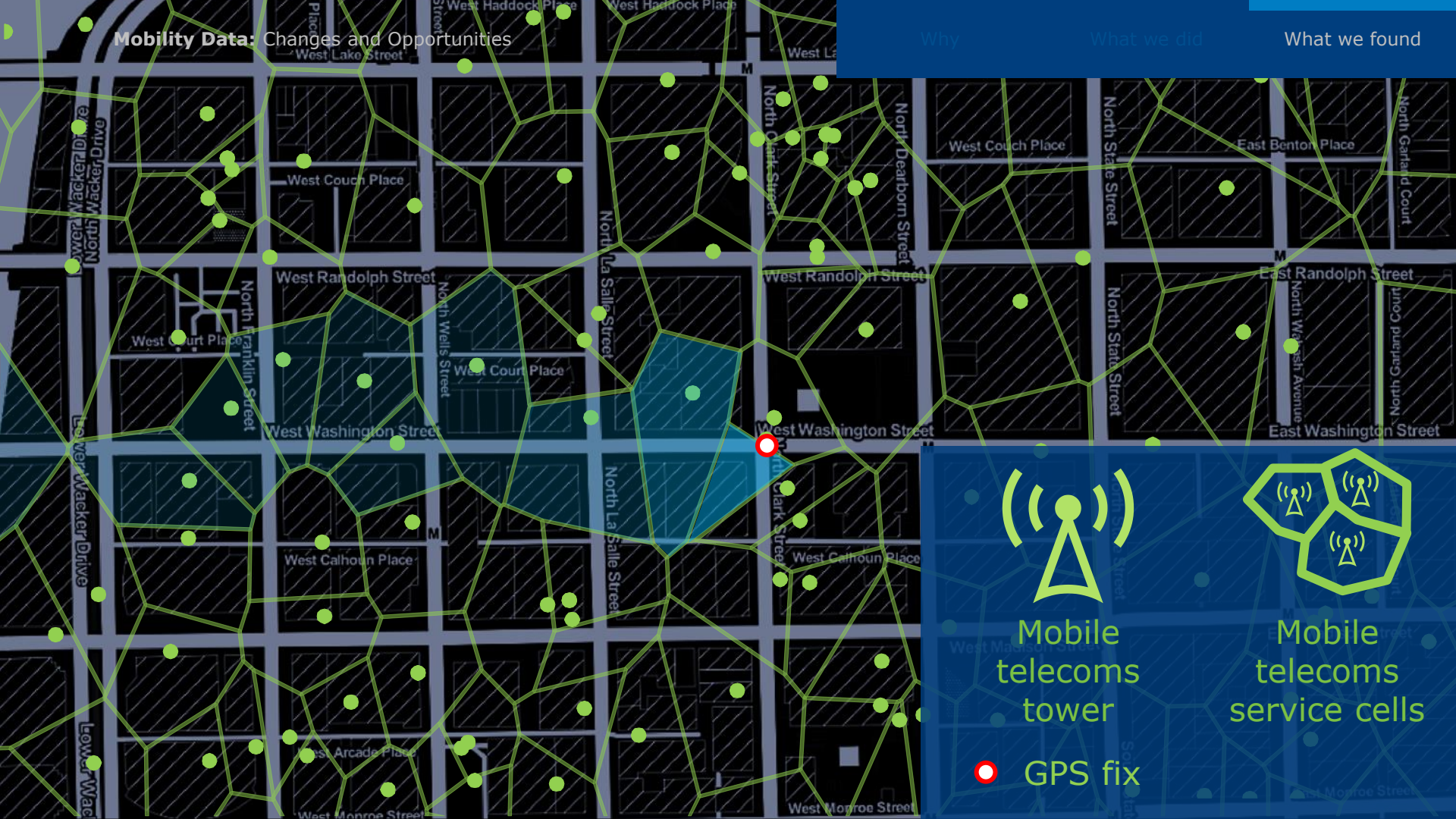
Precise location fix

Mobility Data: Changes and Opportunities

Why

What we did

What we found



Mobile
telecoms
tower



Mobile
telecoms
service cells



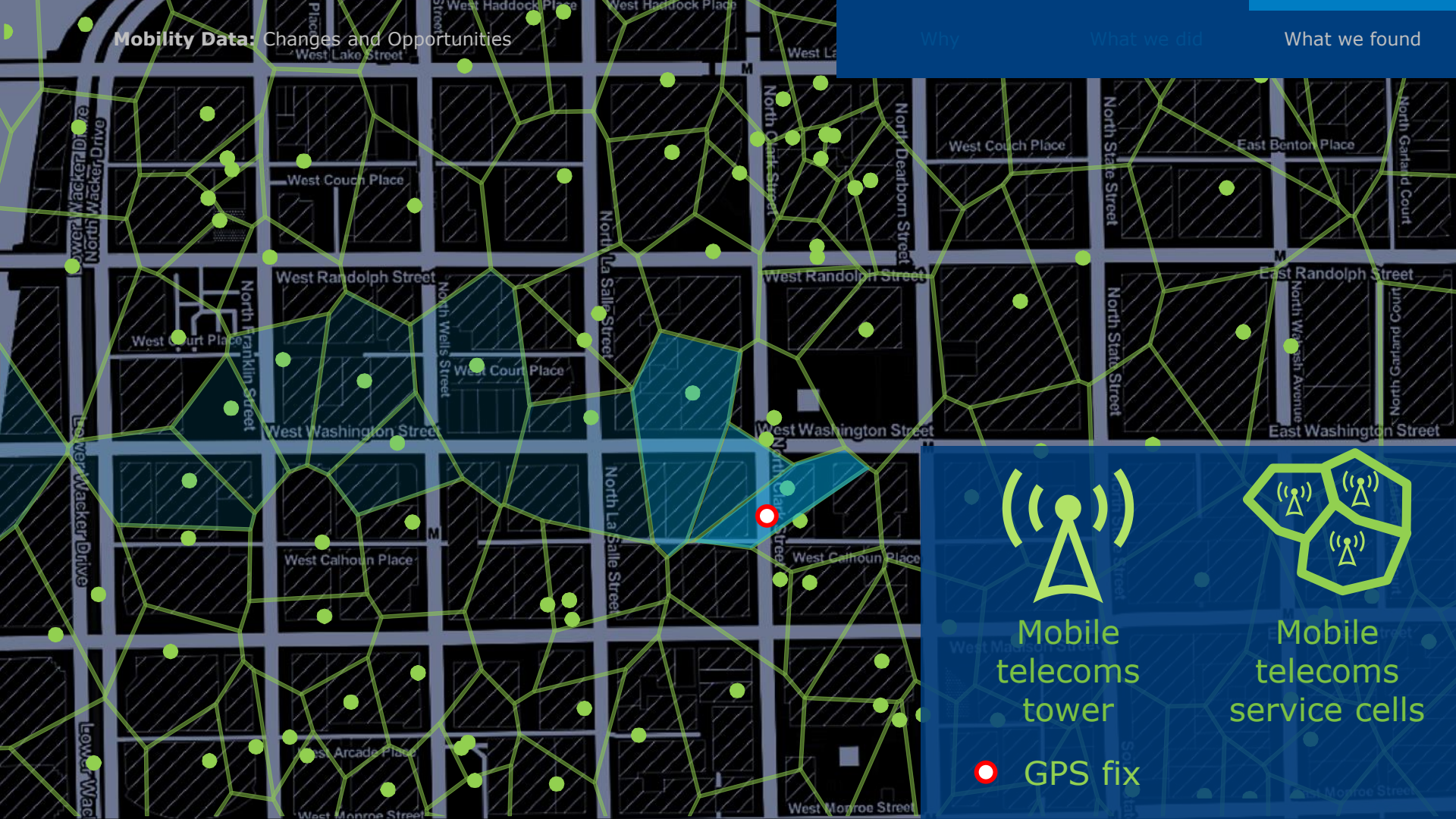
GPS fix

Mobility Data: Changes and Opportunities

Why

What we did

What we found



Mobile
telecoms
tower

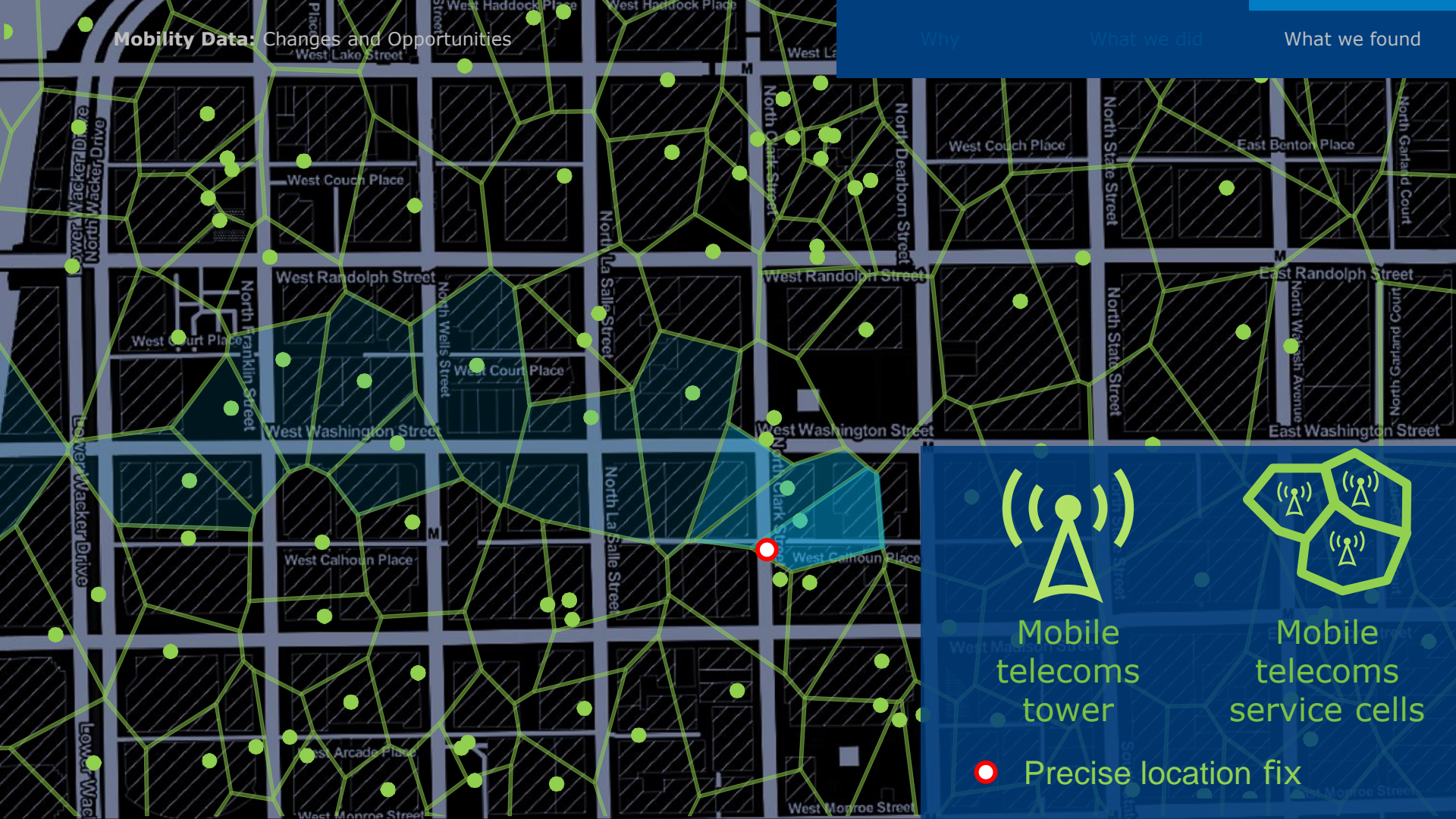


Mobile
telecoms
service cells



GPS fix

Mobility Data: Changes and Opportunities



Why

What we did

What we found



Mobile
telecoms
tower



Mobile
telecoms
service cells



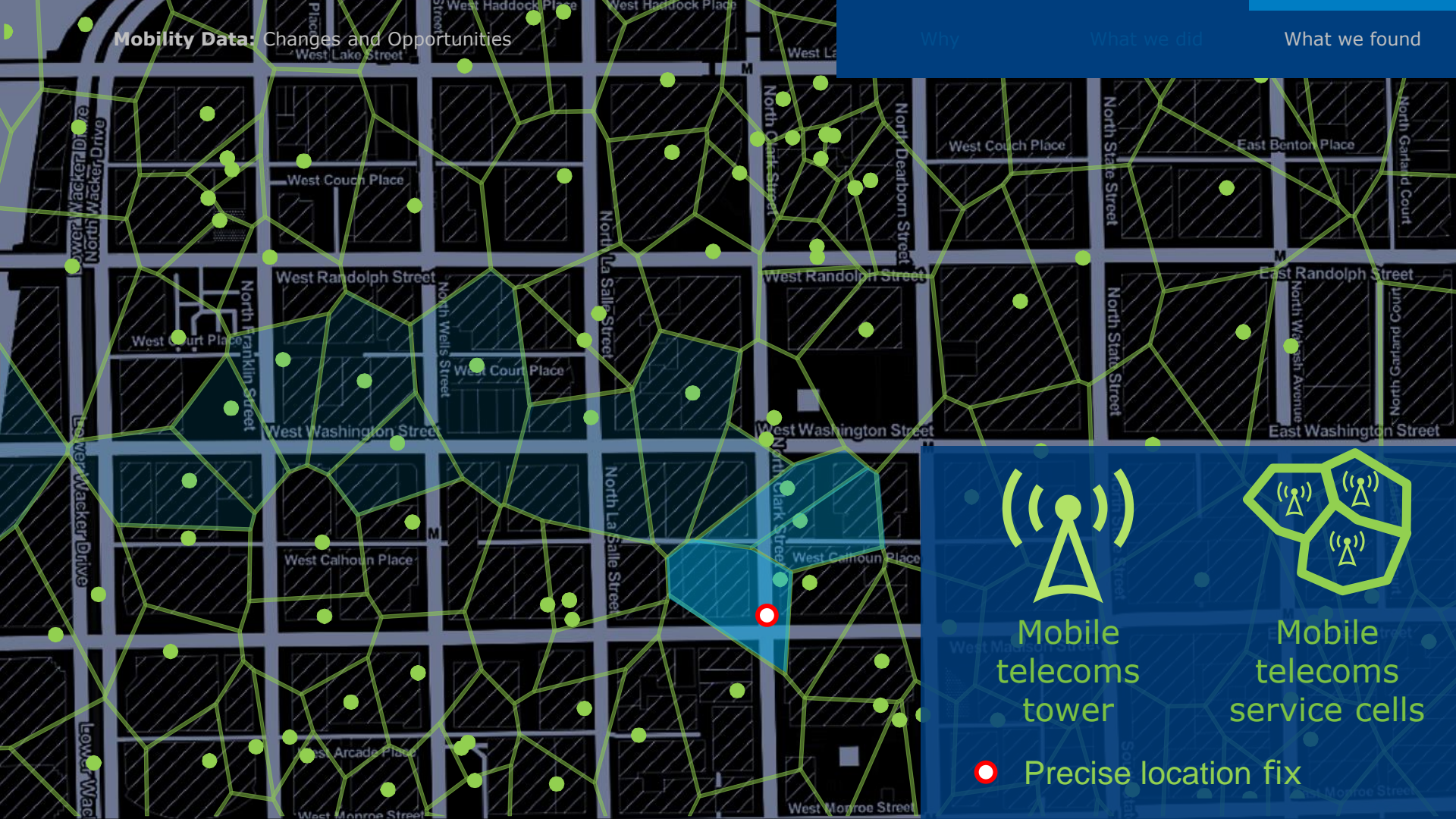
Precise location fix

Mobility Data: Changes and Opportunities

Why

What we did

What we found



Mobile telecoms tower



Mobile telecoms service cells



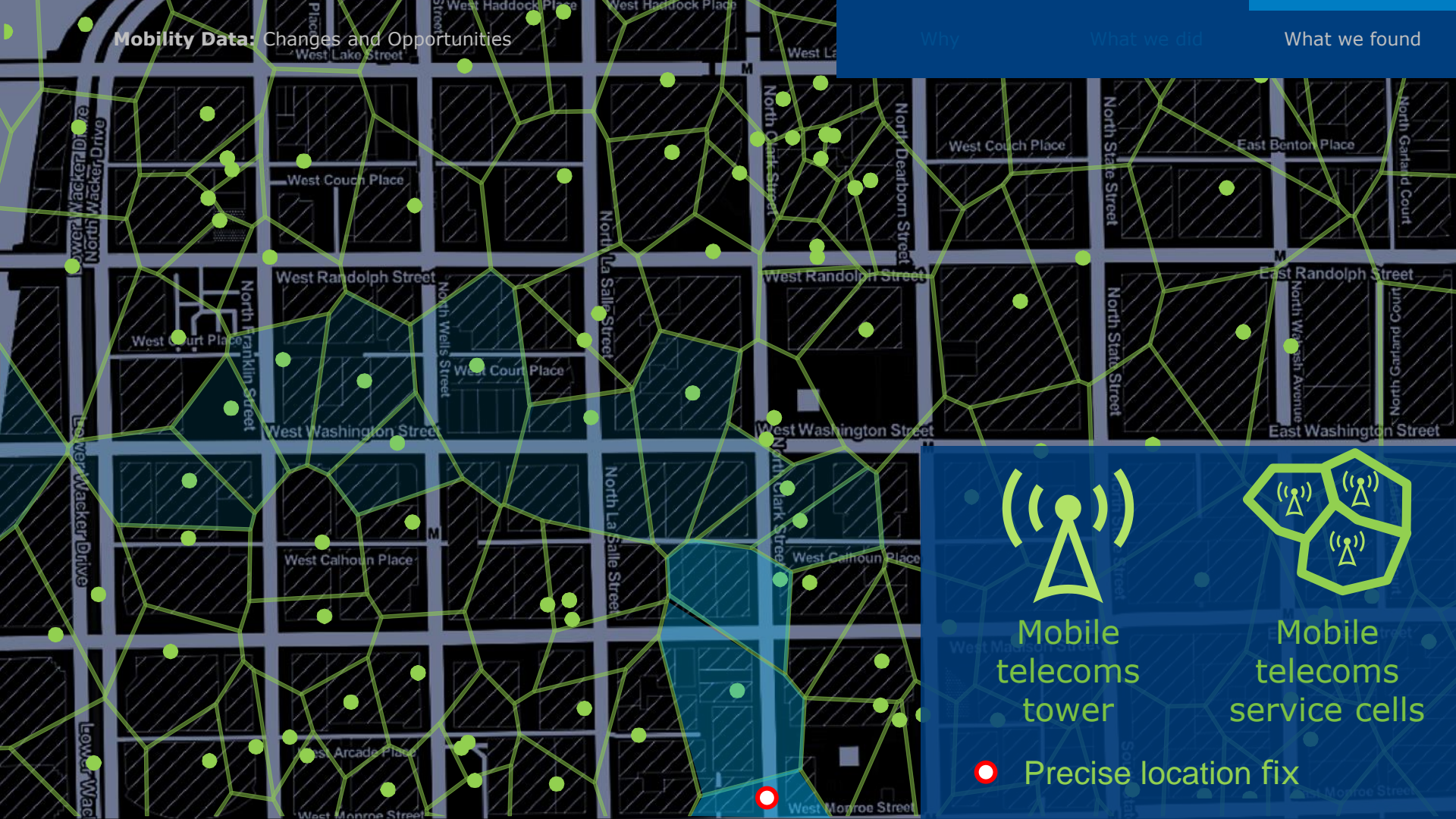
Precise location fix

Mobility Data: Changes and Opportunities

Why

What we did

What we found



Mobile telecoms tower



Mobile telecoms service cells



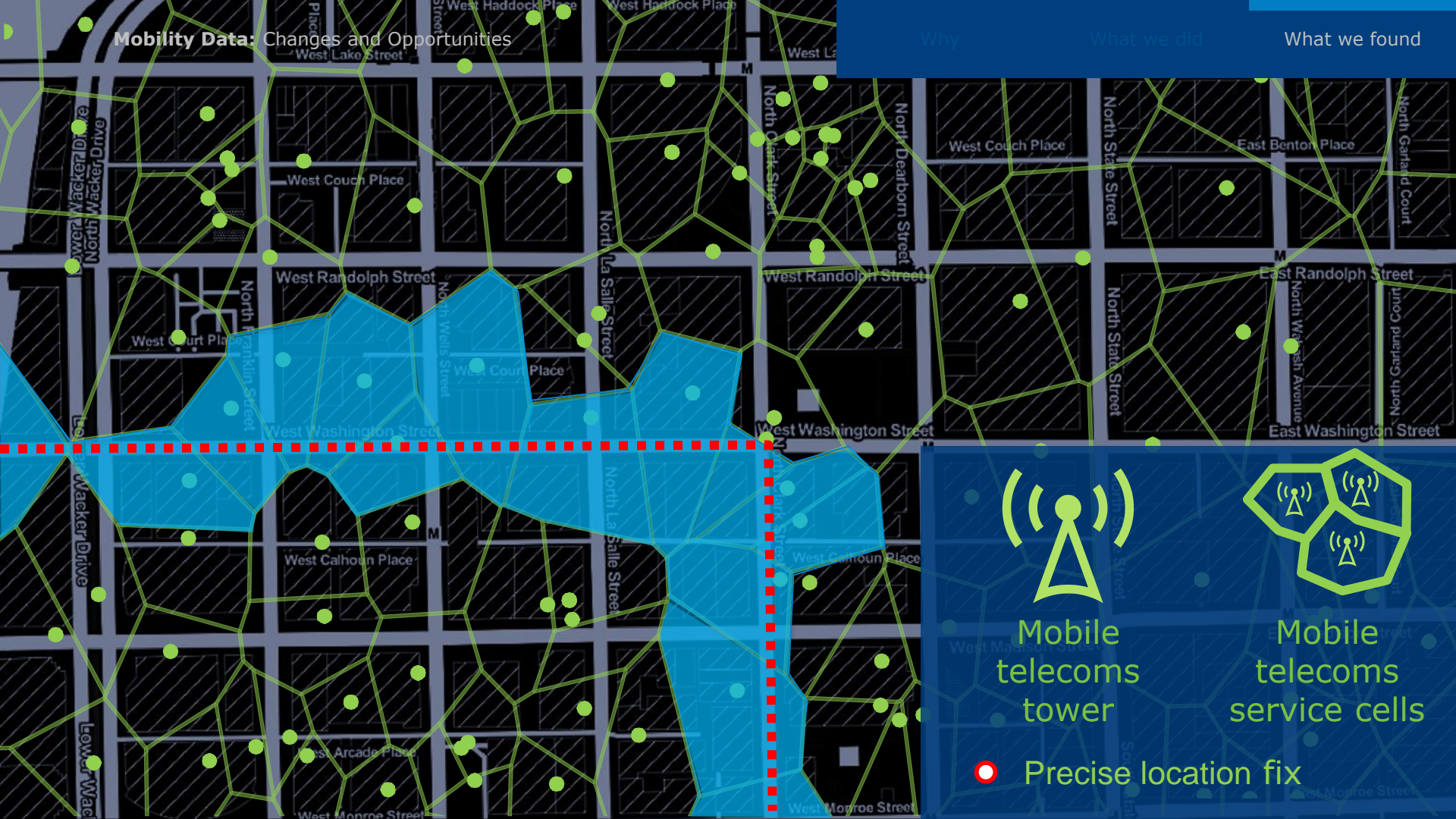
Precise location fix

Mobility Data: Changes and Opportunities

Why

What we did

What we found



Mobile telecoms tower



Mobile telecoms service cells



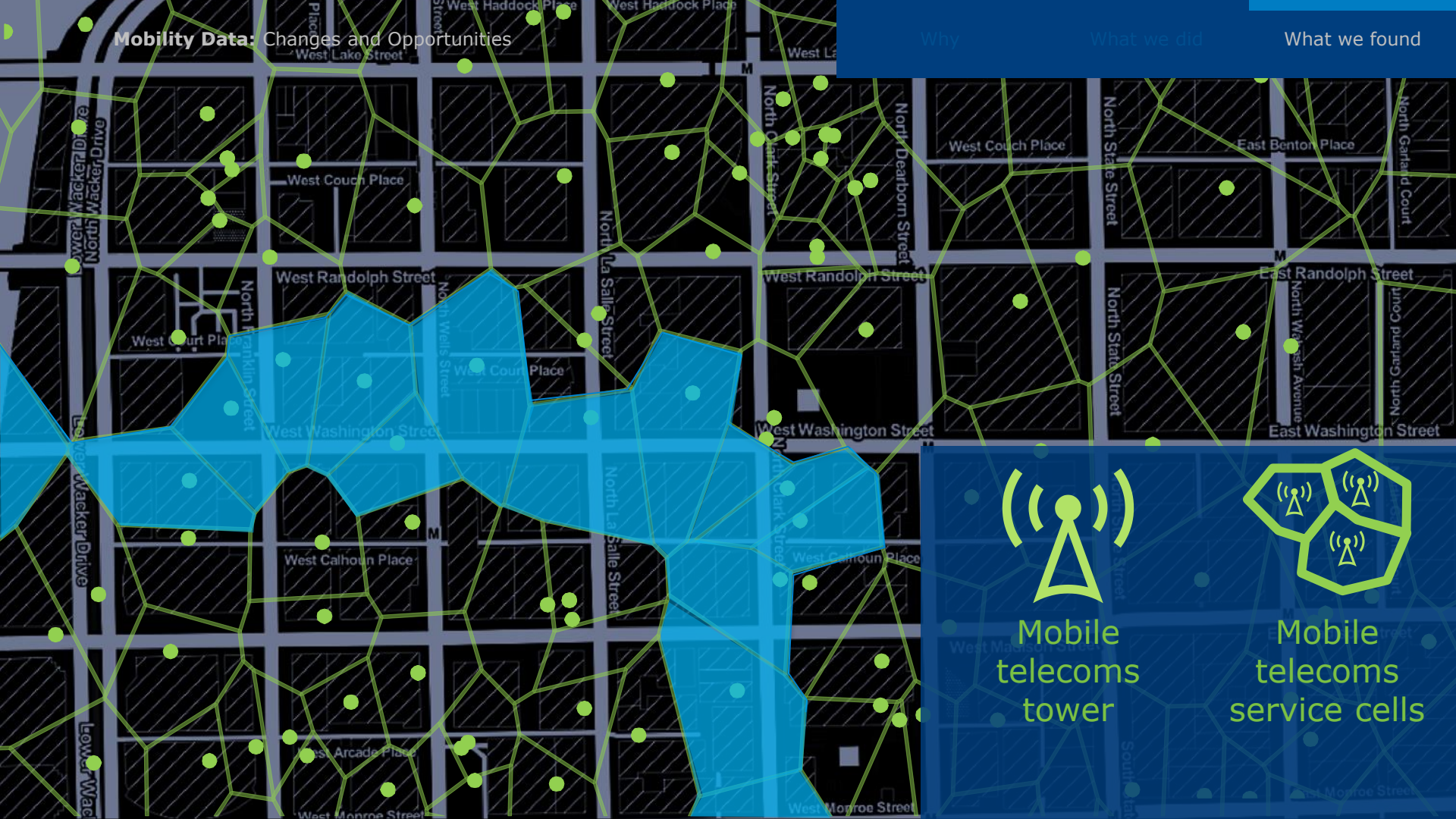
Precise location fix

Mobility Data: Changes and Opportunities

Why

What we did

What we found



Mobile
telecoms
tower



Mobile
telecoms
service cells



4 co-located data points within an anonymised track sufficient for 95% re-identification rate

Mobility Data: Changes and Opportunities

Why

What we did

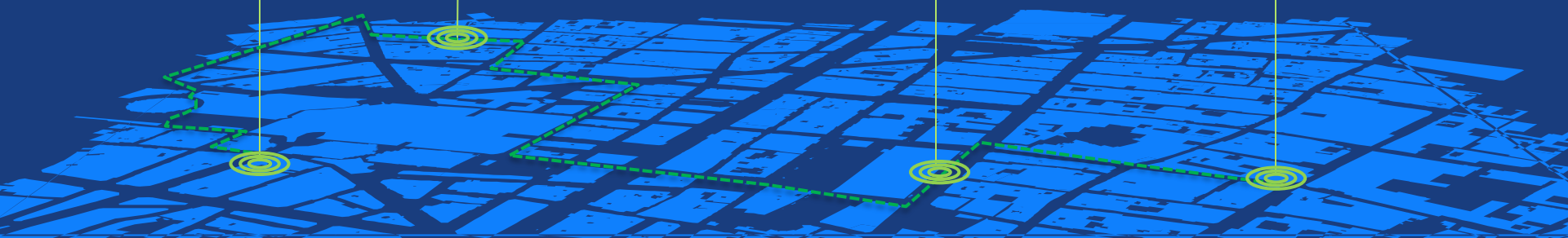
What we found




FOURSQUARE



VISA



Data Use and Privacy: New Perspectives

Traditional Approach

Data actively collected with data subject and data user awareness.

Personal data is predetermined, well-identified and binary (personal/not personal).

Data collected for a predetermined specific use and for a duration in line with that use.

Emerging New Perspectives

Data from machine-to-machine transactions and passive collection – difficult to notify individuals prior to collection.

Personal data dependent on combinatorial techniques and other data sources or may be contextual and dependent on social norms.

Social benefits, economic value and innovation come from co-mingling data sets, subsequent uses and exploratory data mining.

Data Use and Privacy: New Perspectives

Traditional Approach

Data accessed and used principally by the data subject.

Individual provides consent without full engagement or understanding.

Data privacy framework seeks to minimise risks to individuals.

Emerging New Perspectives

Data user can be the data subject, the data controller and/or third party data processors.

Individuals engage in meaningful consent, understand how data is used and derive value from data use.

Data protection framework focuses more on balancing individual privacy with innovation, social benefits and economic growth.

Privacy by design

new data paradigm

individuals keep their own data, requesters transmit code

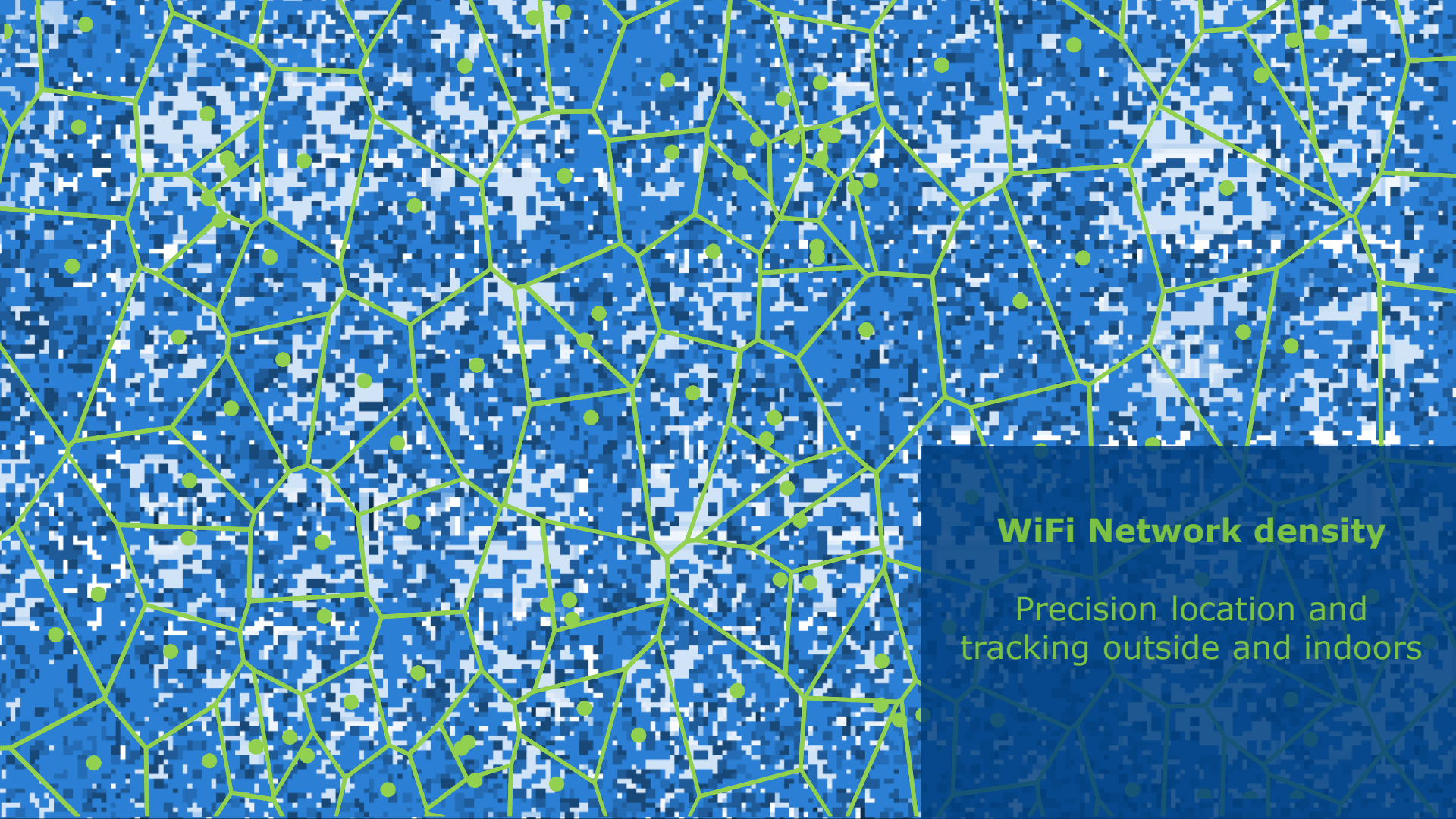
Policy insights:

Privacy integrated into technologies at the outset

New models for public-private data-sharing

Transport authorities will need to audit data they use





WiFi Network density

Precision location and tracking outside and indoors