



SOUTH-EAST EUROPE TRANSPORT OBSERVATORY



South East Europe Transport Observatory (SEETO) Regional Cooperation

ITF statistical meeting

Thursday, April 2, 2015

Ms. Ana Simecki, Transport Planning Manager

The essence

Transport community for the Western Balkans could provide a positive impetus for economic development by improving the region's logistical connections to the European markets where demand is high.

Final Declaration of the Conference on the Western Balkans
28 August 2014, Berlin

**Improving connectivity with
in WB region as well as with the EU is
a key factor for growth and jobs in the
Western Balkans.**

Western Balkan 6 Ministerial - Economic Governance and Connectivity
23 October 2014, Belgrade

SEETO Regional Cooperation

**South East Europe Transport Observatory
SEETO**

**2004 - Memorandum of Understanding
on the development of the South East
Europe Core Regional Transport Network**

**BOSNIA AND
HERZEGOVINA**

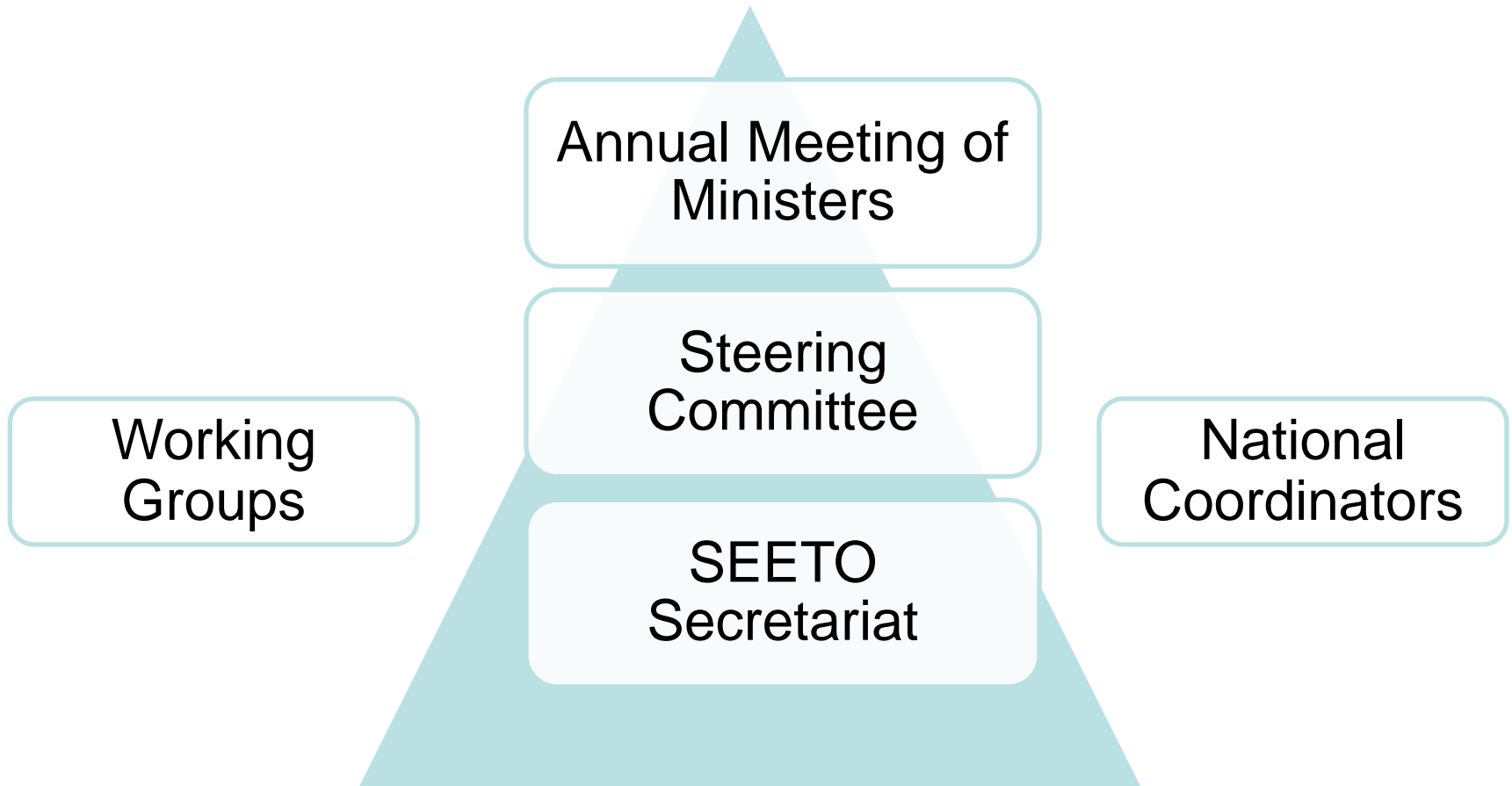
KOSOVO*

ALBANIA

**EUROPEAN
COMMISSION**

*This designation is without prejudice to positions on status, and is in line with UNSCR 1244 and ICJ Advisory opinion on the Kosovo declaration of independence.

SEETO Structure



SEETO Regional Cooperation



SEETO prominent projects and initiatives

- ✓ **RCC South East Europe 2020**
 - SEETO Regional Coordinator for Dimension Transport
- ✓ **EC Technical Assistance project 2014**
 - Flagship Axes Initiative
- ✓ **Regional Transport Study (REBIS update)**
 - Led by the World bank
- ✓ **EC Technical Assistance project 2015**



SOUTH-EAST EUROPE TRANSPORT OBSERVATORY



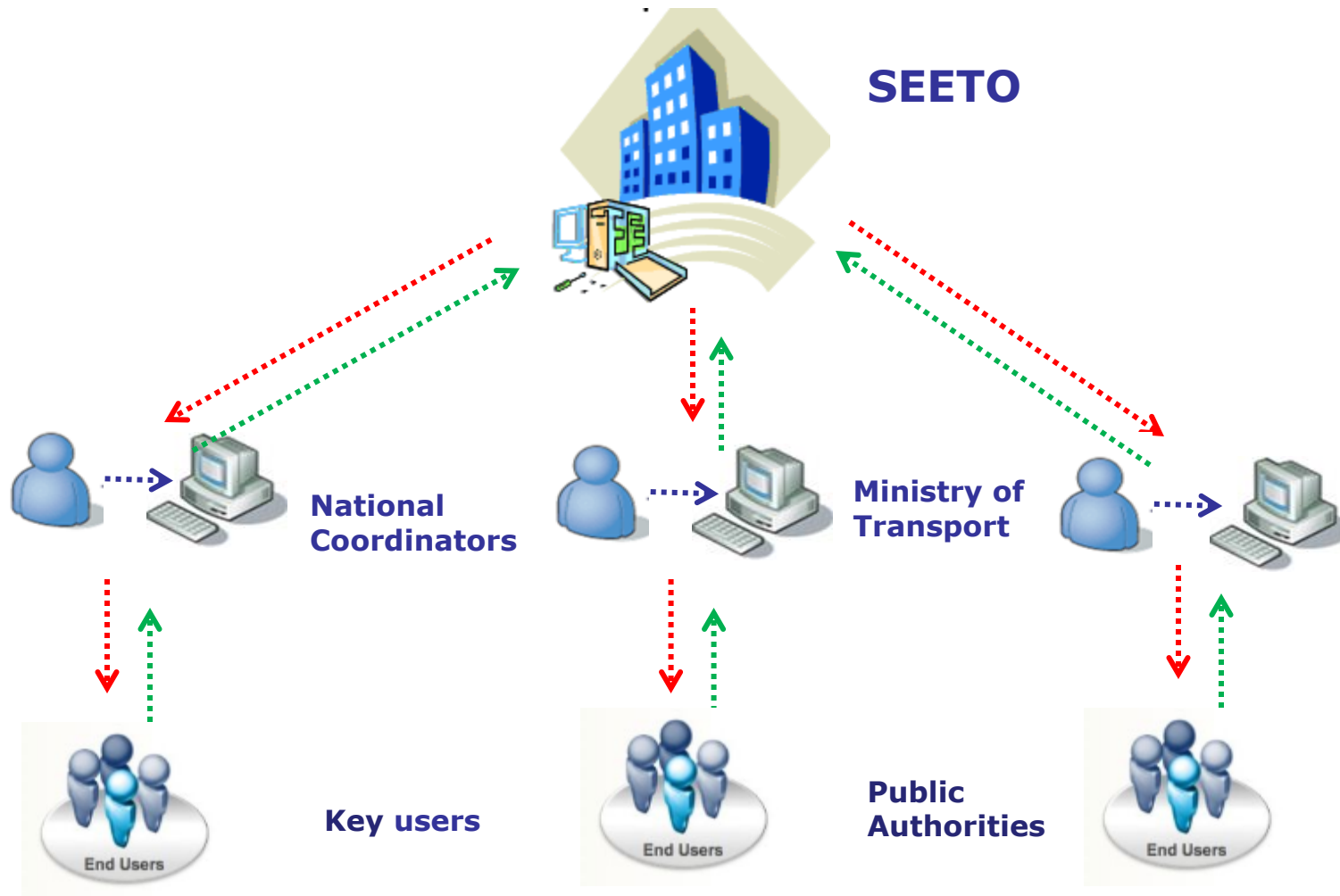
South East Europe Transport Information System (SEETIS)

**Liljana Çela, MSc
Information Resources Manager**

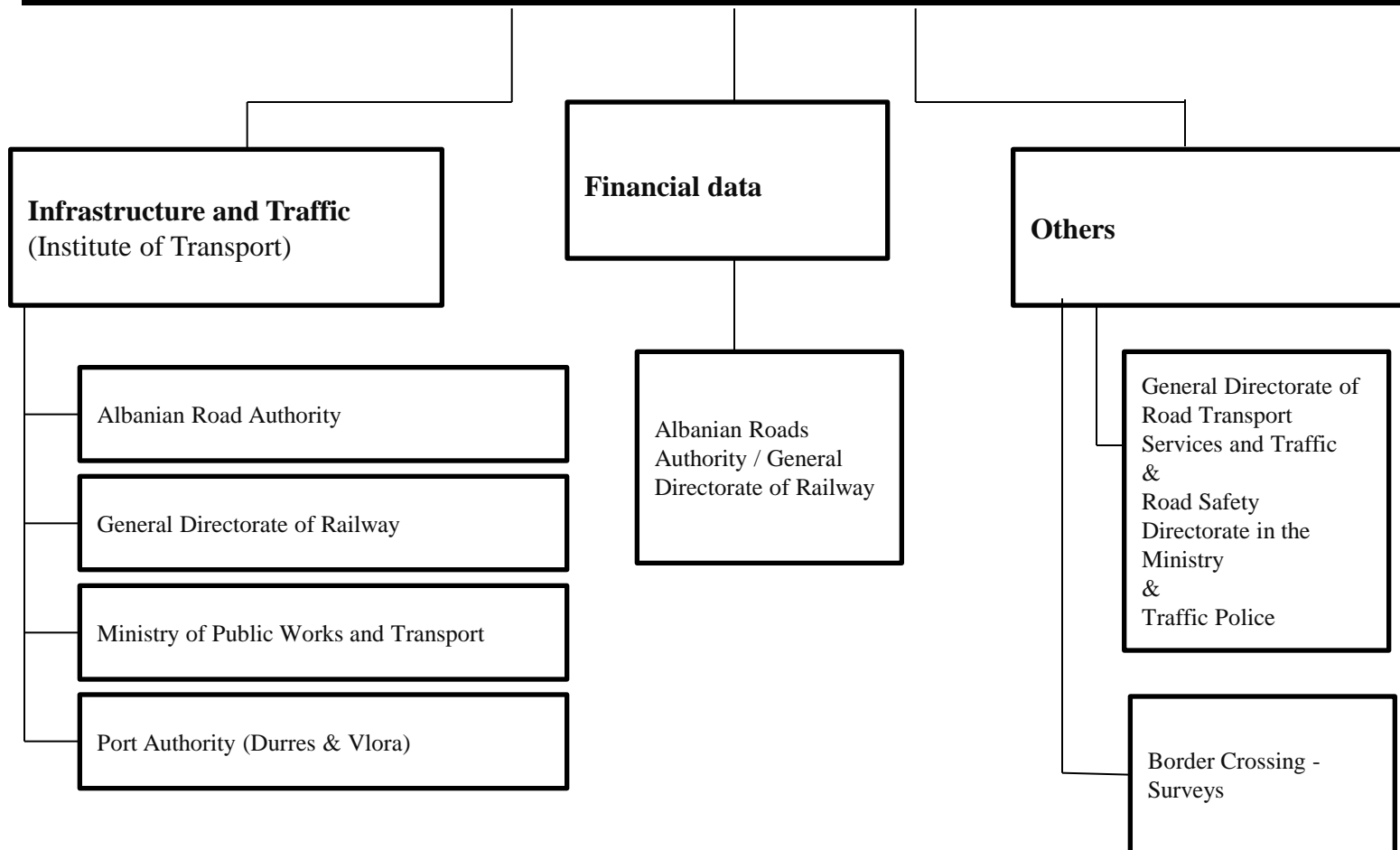
Data collection

- **Infrastructure and traffic data**
 - Roads, Railways, Airports, Seaports, River ports, Inland Waterways, Terminals
- **Road Safety, Border Crossing, Maintenance costs**
- **Projects**
 - Eligible for funding
 - For preparation

Data Collection - Information flow



Ministry Of Public Works and Transport of Albania



Ministry of Communications and Transport of Bosnia and Herzegovina

Infrastructure and Financial data

Other data

Ministry of Transport and Communications of Federation of Bosnia and Herzegovina

Directorate for Civil Aviation of Federation of Bosnia and Herzegovina

Public Company „Motorways of Federation of Bosnia and Herzegovina“

Public Company „Roads of Federation of Bosnia and Herzegovina“

Public Company „Railways of Federation of Bosnia and Herzegovina“

Sarajevo International Airport

Bosnia and Herzegovina
Railways
Public Corporation

Ministry of Transport and Communications of Rep. of Srpska

Directorate for Civil Aviation of Republic of Srpska

Public Company „Motorways of Republic of Srpska“

Public Company „Roads of Republic of Srpska“

Public Company „Railways of Republic of Srpska“

Banja Luka International Airport

River Port of Šamac

Government of Brčko District of Bosnia and Herzegovina

Services in charge of transport, environment, construction, etc.

River Port of Brčko

Border Police of Bosnia and Herzegovina

Road Safety - Entity Ministries of Interior



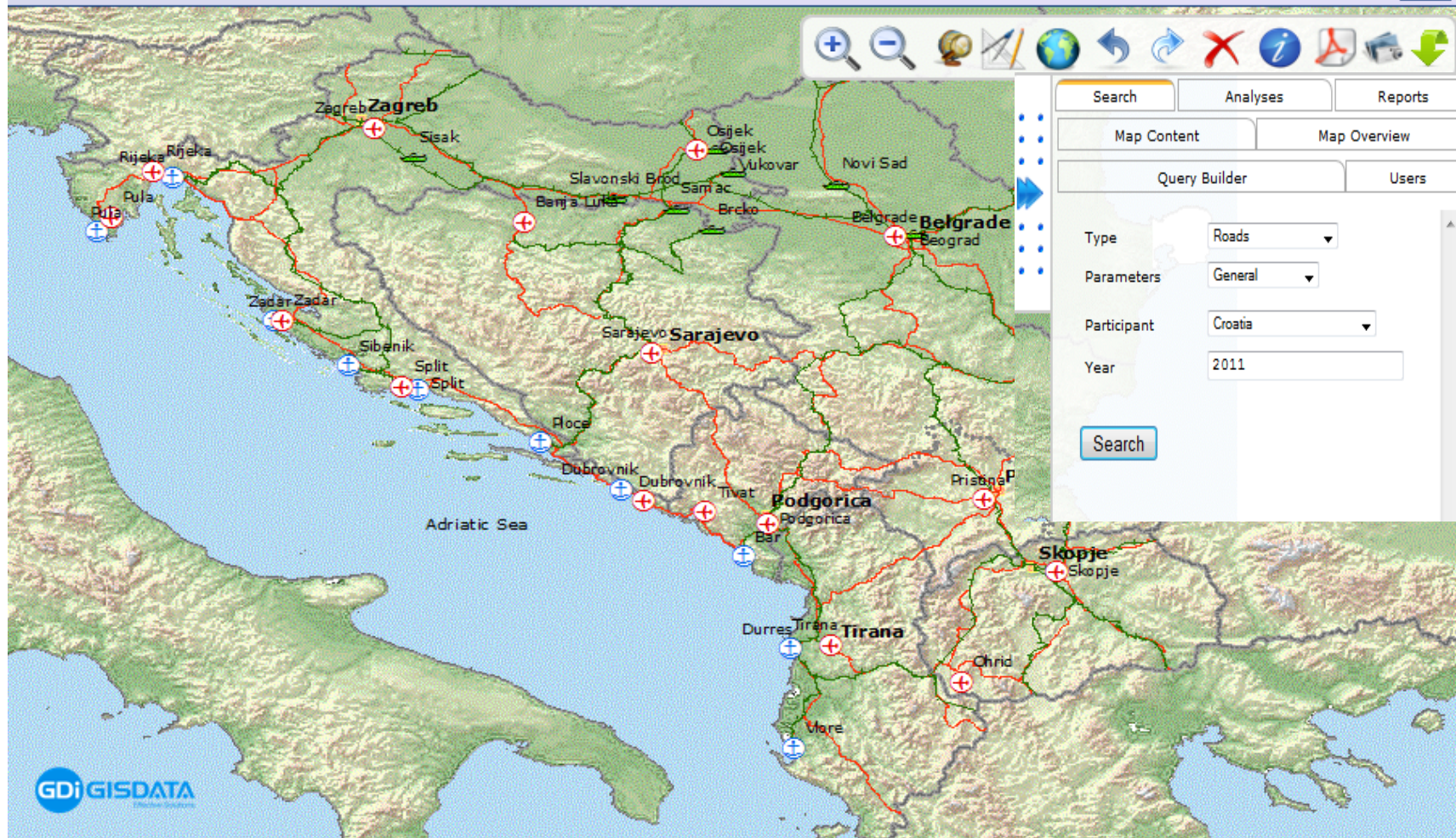
SEETO

SOUTH-EAST EUROPE TRANSPORT OBSERVATORY



SOUTH-EAST EUROPE TRANSPORT OBSERVATORY

[Log In](#)





Road Section data

Results

ROADS

No.	Participant	Code	Start node	End node	Length	Valid from	Valid to	Confirmed				
1.	Croatia	R1.01.01	Bosiljevo 2	Ogulin	20.00	2006		No				
2.	Croatia	R1.01.02	Ogulin	Brinje	28.00	2006		No				
3.	Croatia	R1.01.03	Brinje	Zuta Lokva	13.00	2006		No				
4.	Croatia	R1.01.04	Zuta Lokva	Otocac	10.00	2006		No				

Section General Infrastructure Data

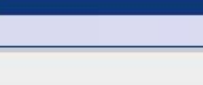
Category	Pavement	Condition	Nr of lanes	Total Capacity	Max allowed speed	Valid for	
4 Lane Motorway or Expressway	---	Very Good	4	52000	130	2006	
4 Lane Motorway or Expressway	---	Very Good	4	52000	130	2007	
4 Lane Motorway or Expressway	---	Very Good	4	52000	130	2008	
4 Lane Motorway or Expressway	Asphalt	Very Good	4	52000	130	2009	
4 Lane Motorway or Expressway	Asphalt	Very Good	4	52000	130	2010	
4 Lane Motorway or Expressway	Asphalt	Very Good	4	52000	120	2011	

Existing Section Traffic

AADT	Passenger Cars	Busses	Trucks	Percentage of heavy good vehicles	Valid for	
10674	0	0	0	0.00	2006	
12294	0	0	0	0.00	2007	
11929	10617	119	1193	0.00	2008	
12189	10970	122	1097	0.00	2009	
12251	11411	114	726	0.00	2010	
12841	12003	115	723	6.00	2011	

Road Safety Data






SEETO
SOUTH-EAST EUROPE TRANSPORT OBSERVATORY


SOUTH-EAST EUROPE TRANSPORT OBSERVATORY

LOGGED USER: Lily
[Log Out](#)

Results

USERS							
No.	User Name	User group	Participant	Transport mode	Name of Company or Authority	Correspondence Address	Contact Person
1.	gradosavijevic	Key User	Serbia	Railway	Serbian Railways	Serbian Railways	Goran Radosavijevic
2.	ikostic	Key User	Serbia	Road	Public Enterprise Road of Serbia	Public Enterprise Road of Serbia	Ivana Kostic





Search
Analyses
Reports

Map Content
Map Overview

Query Builder
Users

Name of Company or Authority

Correspondence Address

Contact Person

Phone number

Fax number

E-mail

User group


Participant

Transport mode


User Name

Password

Repeat Password





Map Content –Background data

**SEETO**
SOUTH-EAST EUROPE TRANSPORT OBSERVATORY

SOUTH-EAST EUROPE
TRANSPORT OBSERVATORY

LOGGED USER: Lily [Log Out](#)





Search

Analyses

Reports

Map Content

Map Overview

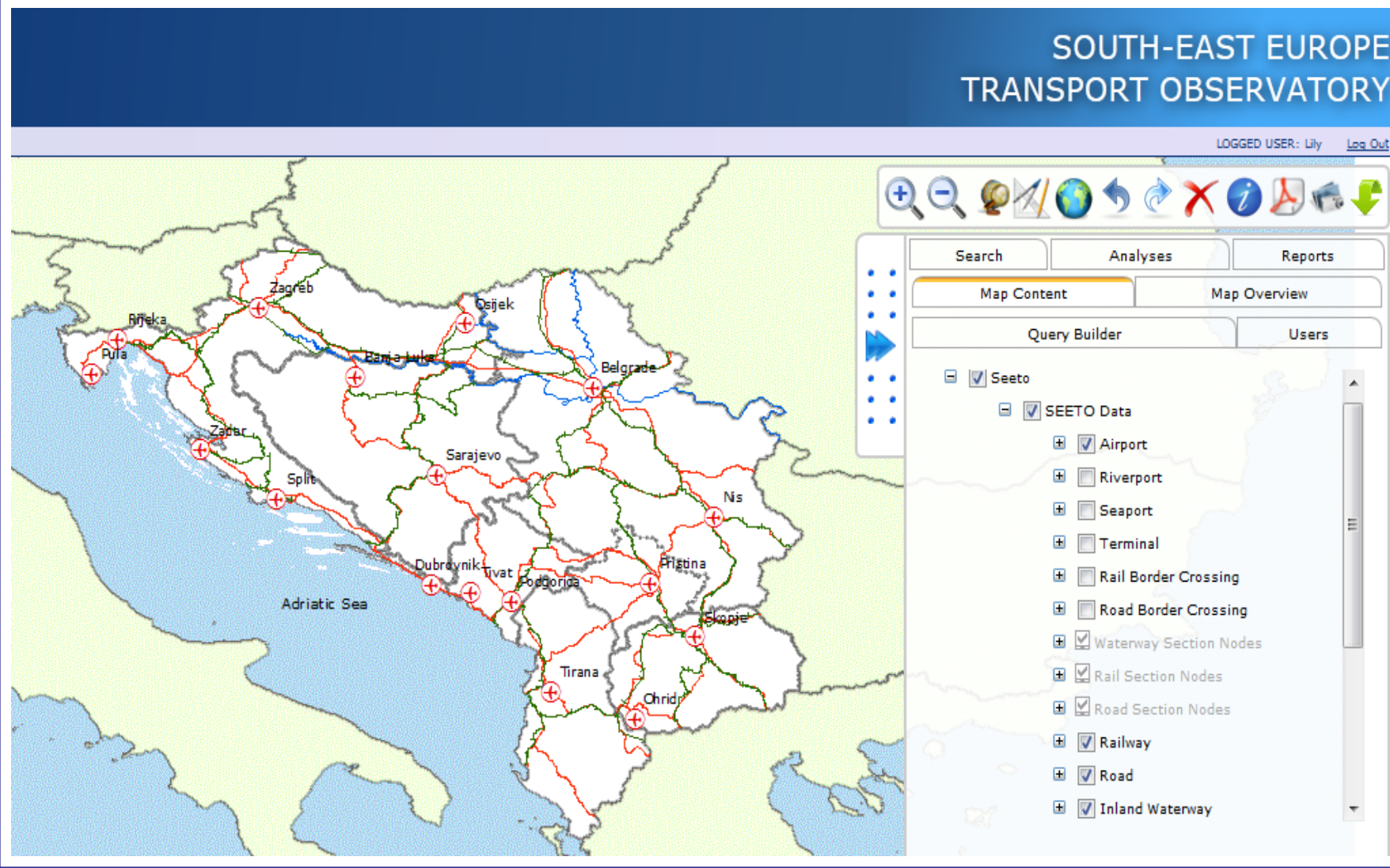
Query Builder

Users

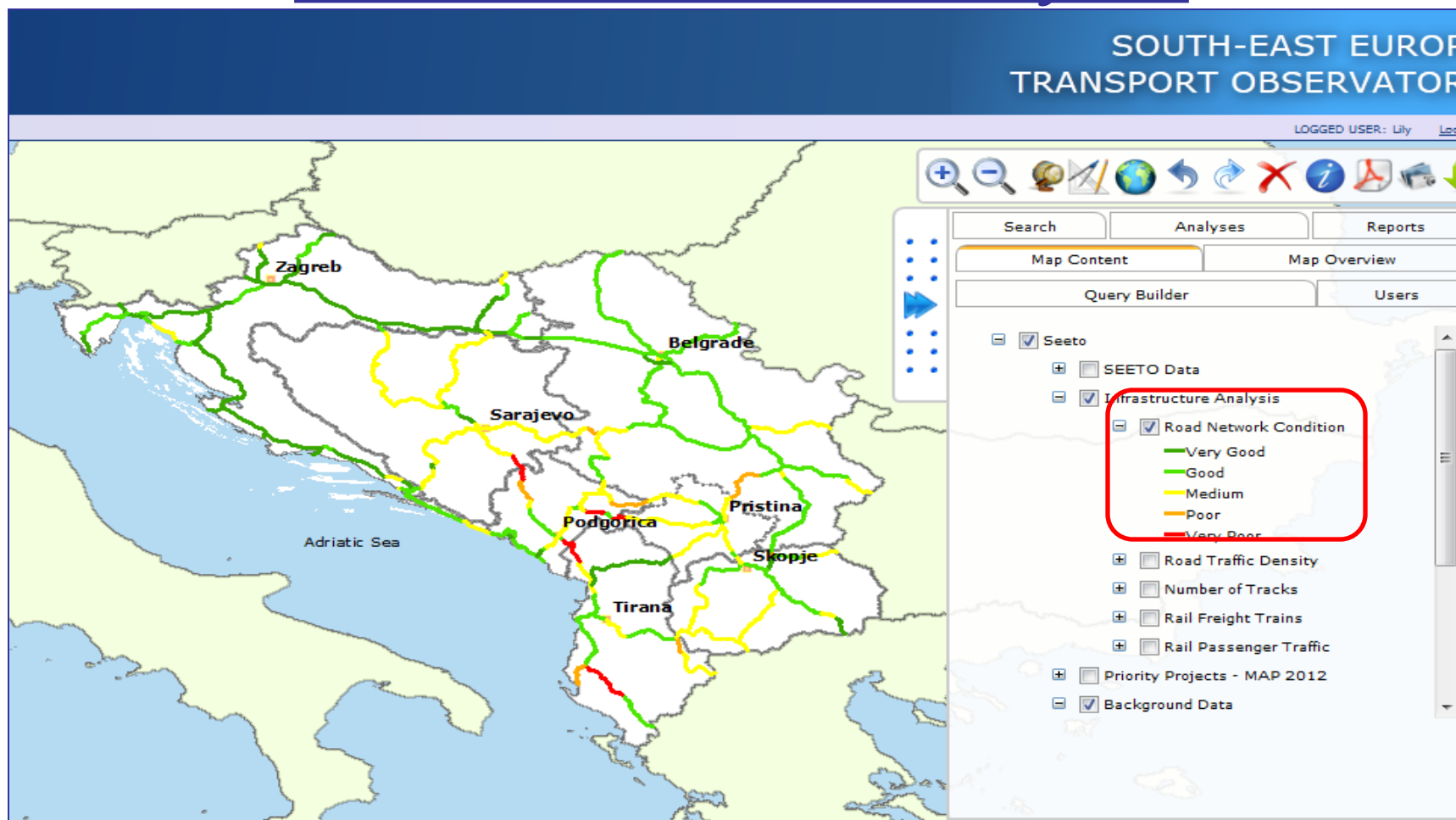
☒ Seeto

- ☒ SEETO Data
- ☐ Infrastructure Analysis
- ☒ Priority Projects - MAP 2012
- ☒ Background Data
 - ☒ Cities
 - ☒ Countries
 - ☒ Oceans
 - ☒ Administrative Borders
- ☒ Background Imagery
 - ☐ Elevation
 - ☐ Shaded Relief

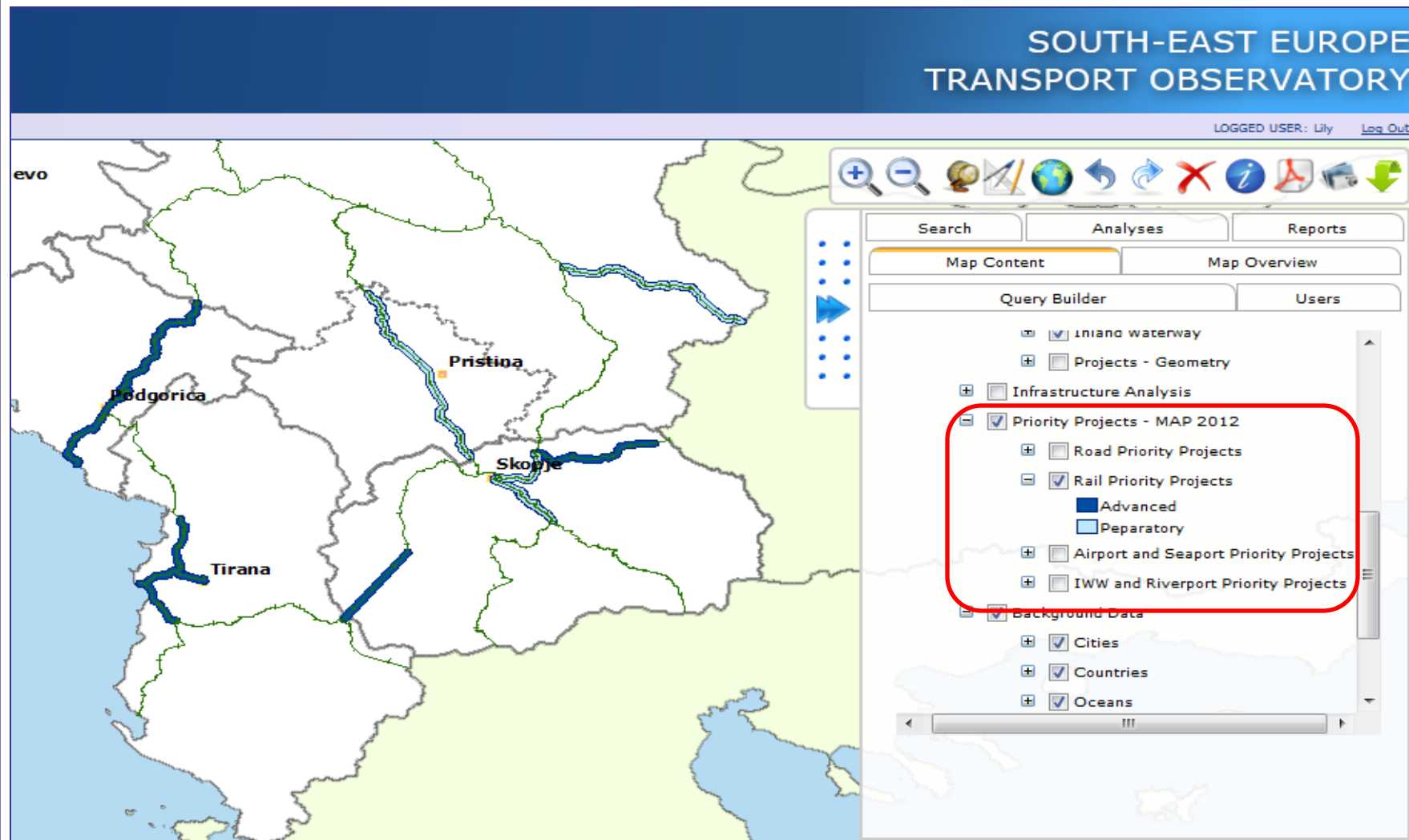
Map Content – SEETO layers



Map Content – Infrastructure Analysis



Map Content – Priority Projects



Analysis - 1

Results

Table: SEETO Comprehensive Road Network traffic indicators 2010 and 2011

Corridor or Route	2010		2011		AADT Index 2011/2010
	AADT -weighted average (veh/day)	HGV traffic (%)	AADT -weighted average (veh/day)	HGV traffic (%)	
Corridor Vb	4119246	27.64	4308638	28.15	101.85
Corridor Vc	4317881	43.79	3955788	56.38	128.75
Corridor VIII	5954456	79.56	5820934	91.75	115.32
Corridor X	14078367	158.71	14461269	160.27	100.98
Corridor Xa	724375	6.11	719158	5.95	97.38
Corridor Xb	1737153	31.78	1857270	28.65	90.15
Corridor Xc	483230	32.60	565392	23.88	73.25
Corridor Xd	432552	9.27	411704	9.84	106.15
Route 1	6283293	48.17	6420937	48.47	100.62
Route 10	1281863	15.19	1211832	16.71	110.01

Results

Table: List of the SEETO Comprehensive Rail Network bottlenecks (double tracks)

Code	Description	Start node	End node	Length (km)	Number of tracks	Passenger trains (number)	Freight trains (number)	Total trains (number)
X.01	Corridor X	Savski Marof	Zapresic	12.00	2	136	72	208
X.02	Corridor X	Zapresic	Zagreb	15.00	2	136	27	163
X.03	Corridor X	Zagreb	Dugo Selo	33.00	2	171	37	208



Export data

The screenshot shows the SEETO web application interface. At the top, there is a toolbar with various icons for map navigation and analysis. Below the toolbar, there are tabs for 'Search', 'Analyses', and 'Reports'. The 'Analyses' tab is currently selected. Under 'Analyses', there are sub-tabs for 'Map Content' and 'Map Overview'. Below these, there are buttons for 'Query Builder' and 'Users'. The main area displays a list of analysis options, including:

- ROAD NETWORK LENGTH BY RP
- ROAD NETWORK CONDITION
- ROAD TRAFFIC FLOWS
- ROAD TRAFFIC INDICATORS
- ROAD MAINTENANCE EXPENDITURES
- ROAD INVESTMENT REQUIREMENTS
- ROAD BOTTLENECK ANALYSIS
- ROAD LOS LEVELS
- RAIL NETWORK LENGTH BY RP
- RAIL CONDITION
- RAIL PASSENGERS TRAFFIC
- RAIL FREIGHT TRAFFIC
- RAIL BOTTLENECKS (SINGLE TRACK)
- RAIL BOTTLENECKS (DOUBLE TRACKS)
- RAIL MAINTENANCE EXPENDITURES
- RAIL INVESTMENT REQUIREMENTS
- AIRPORTS INFRASTRUCTURE DATA
- AIRPORTS TRAFFIC PERFORMANCE
- SEAPORTS INFRASTRUCTURE DATA
- SEAPORTS TRAFFIC PERFORMANCE
- POPULATION ACCIDENTS INJURIES AND

Analysis - 2

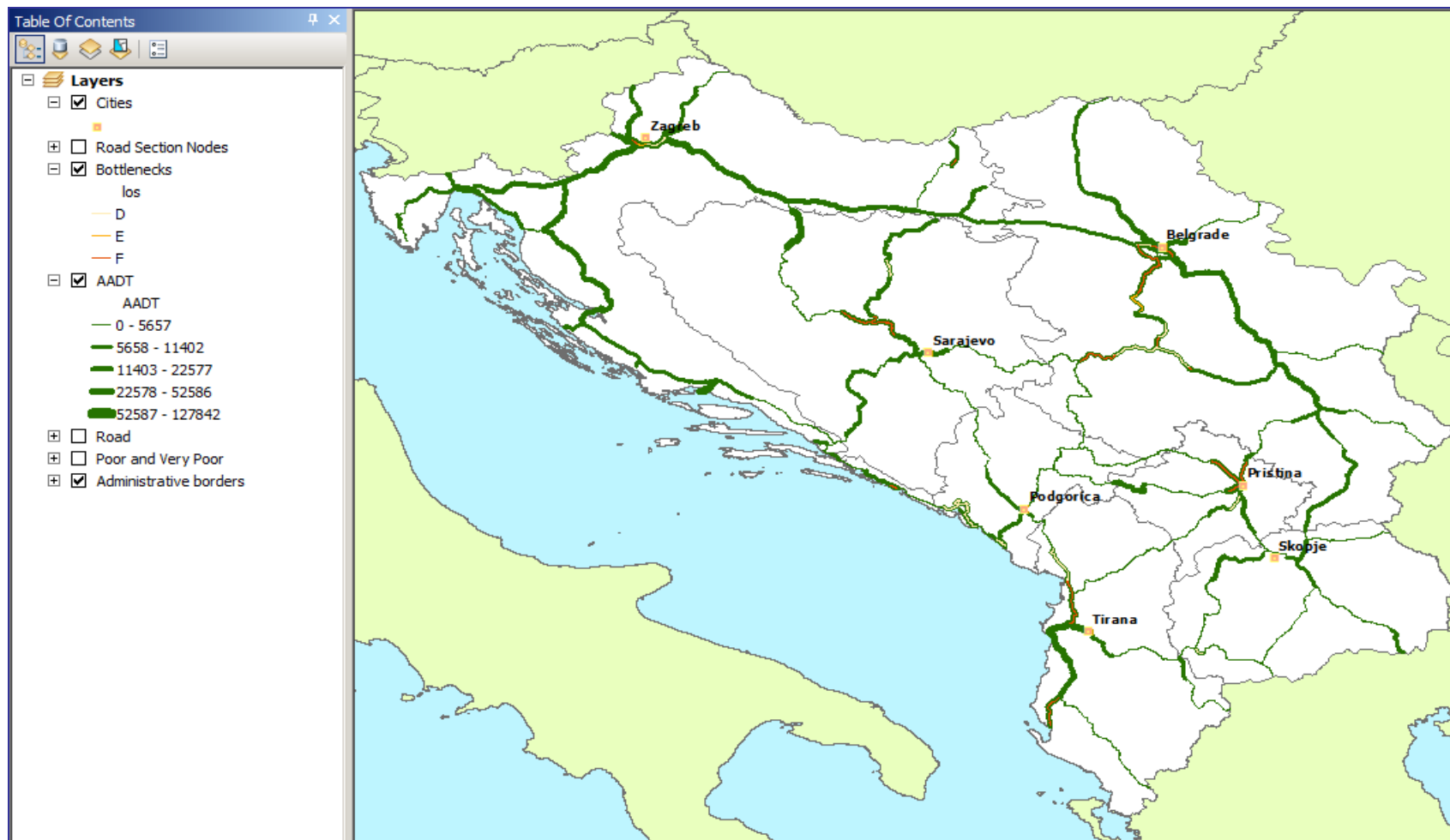
1. Road Safety

Results															
Table: Population, total number of accidents, injuries and fatalities (2009 - 2011)															
Participant	Population (thousands)			Number of vehicles (thousands)			Number of accidents			Fatalities			Injured		
	2009	2010	2011	2009	2010	2011	2009	2010	2011	2009	2010	2011	2009	2010	2011
Albania	3186.00	3186.00	3214.00	399.00	419.00	411.00	1465	1564	1876	378	352	322	1369	1748	2150
Bosnia and Herzegovina	4346.00	4346.00	4346.00	905.00	954.00	1026.00	40237	38911	37928	382	355	356	11052	10024	10039
Croatia	4436.00	4291.00	4290.00	2005.00	1969.00	1969.00	50388	44394	42443	548	426	418	21923	18333	18065
Kosovo*	2350.00	2350.00	2000.00	400.00	300.00	280.00	13346	12780	18888	152	148	128	7984	7687	8324

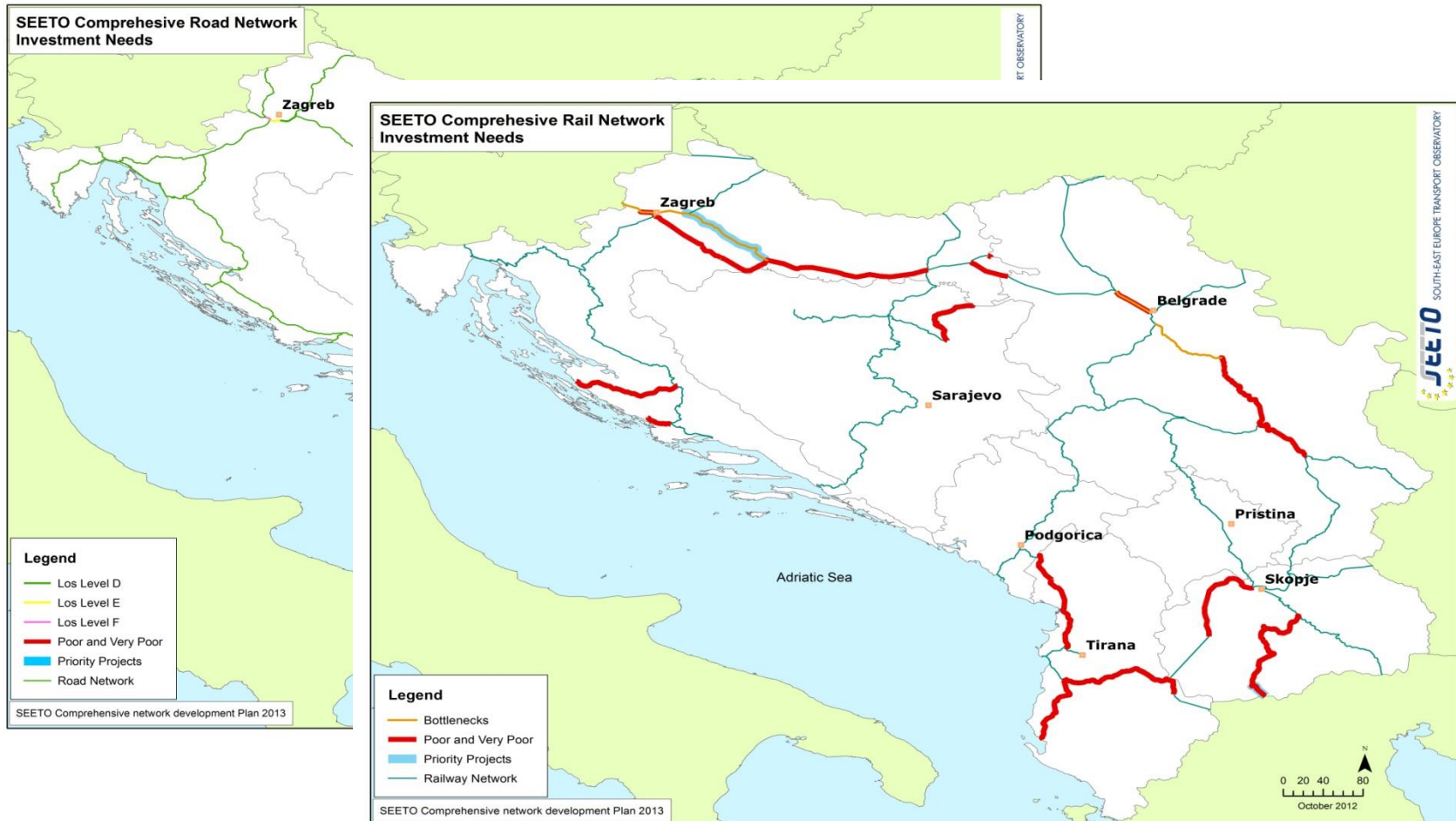
2. Project data

Results													
Table: Summary of Advanced/Preparatory projects (2011)													
Transport mode	Corr/Route /Node/River	Name of the projects	Project ID	Project type	Project stage	Project status	Implement schedule		Type of works	Number of sections	Length	Total project cost	EIRR
							Start	End					
Road	Route 6a	Construction of By-pass Rozaje II phase	MONRDR6a00111	Priority	Advanced	Design completed	-	-	Upgrade	1	2.00	6.00	10.00
Road	Corridor VIII	Stenkovec-Blace; Gostivar-Kafasan; Trebeniste-Ohrid; Podmolje-Struga	MACRDVIII00511	Priority	Advanced	Design completed	-	-	-	1	-	558.50	0.00
Road	Corridor X	Upgrade of section Miladinovci-Negotino	MACRDX00711	Priority	Preparatory	Project identified and ToR prepared	-	-	Upgrade	1	0.00	25.00	0.00

Spatial Analysis- Bottlenecks

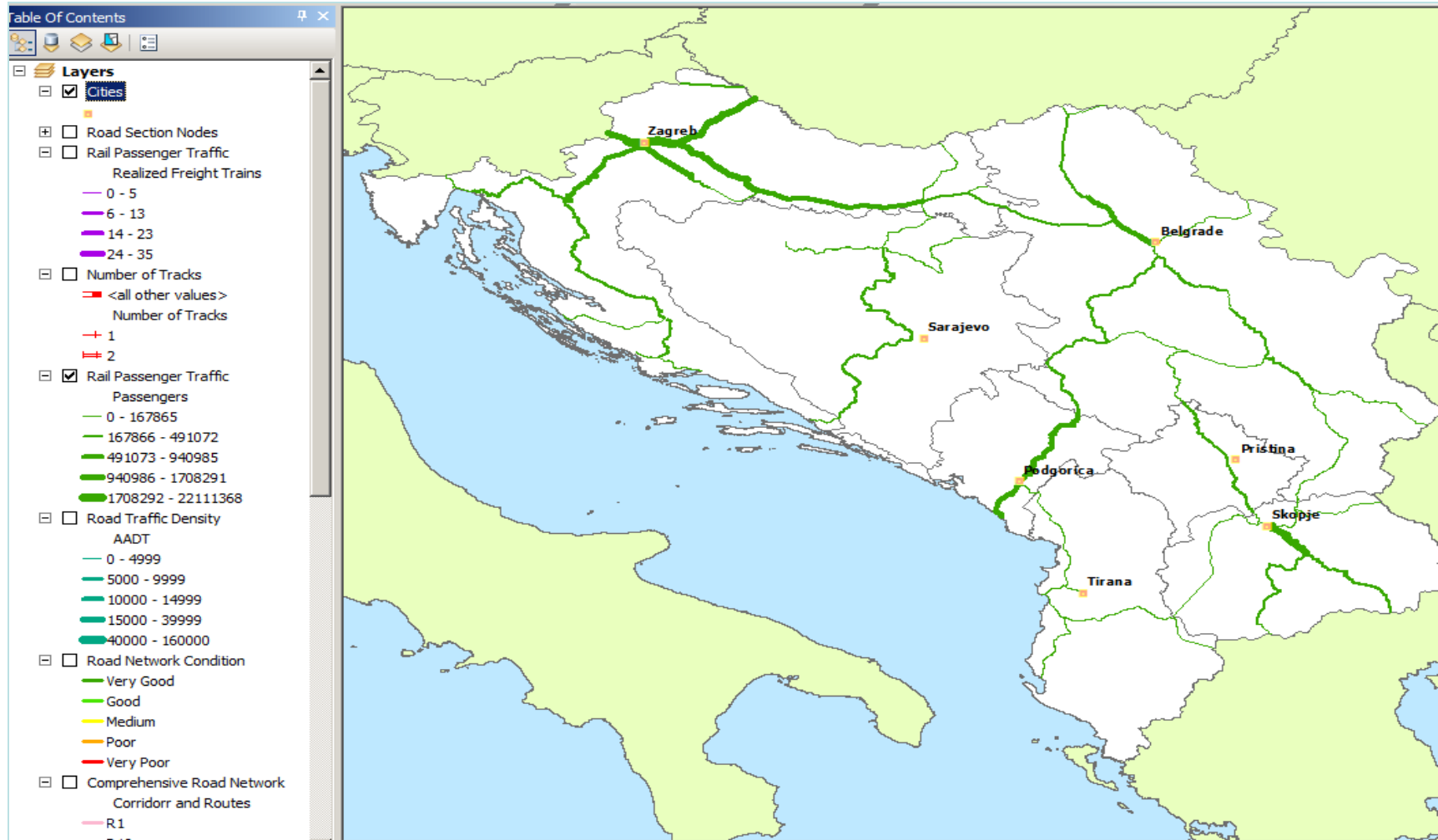


Spatial Analysis-Investment Needs

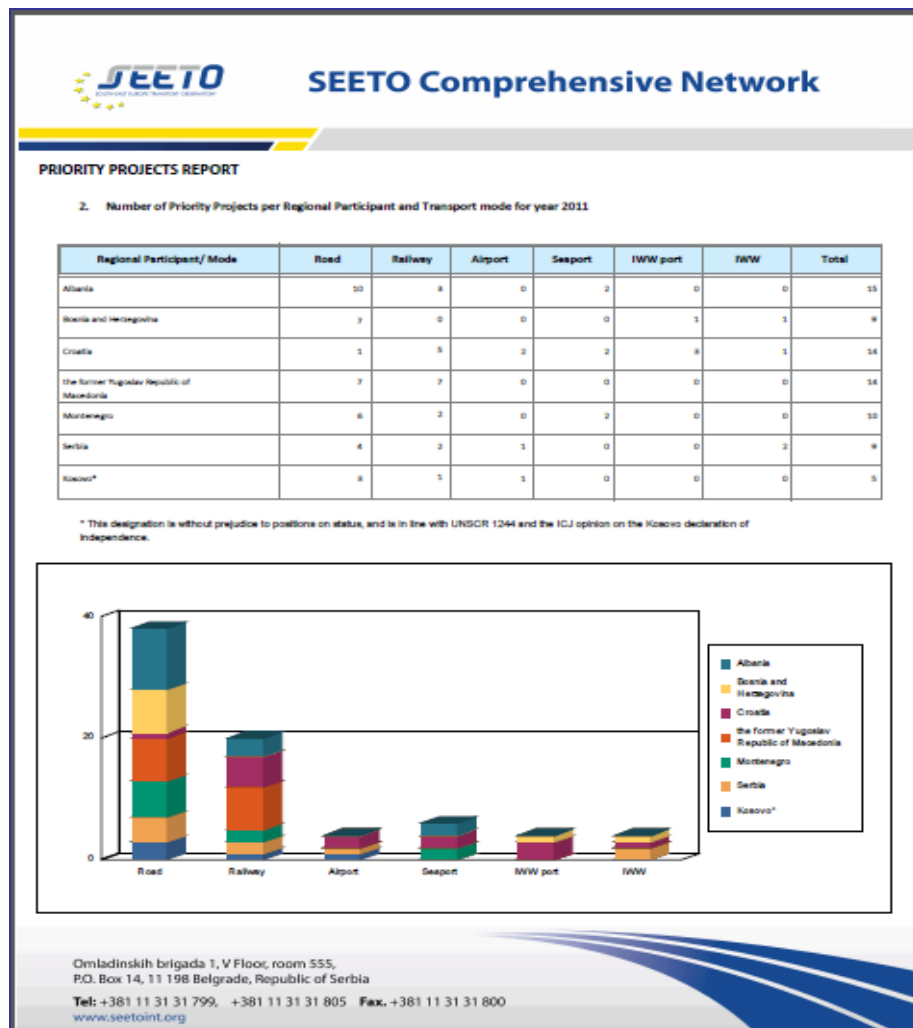
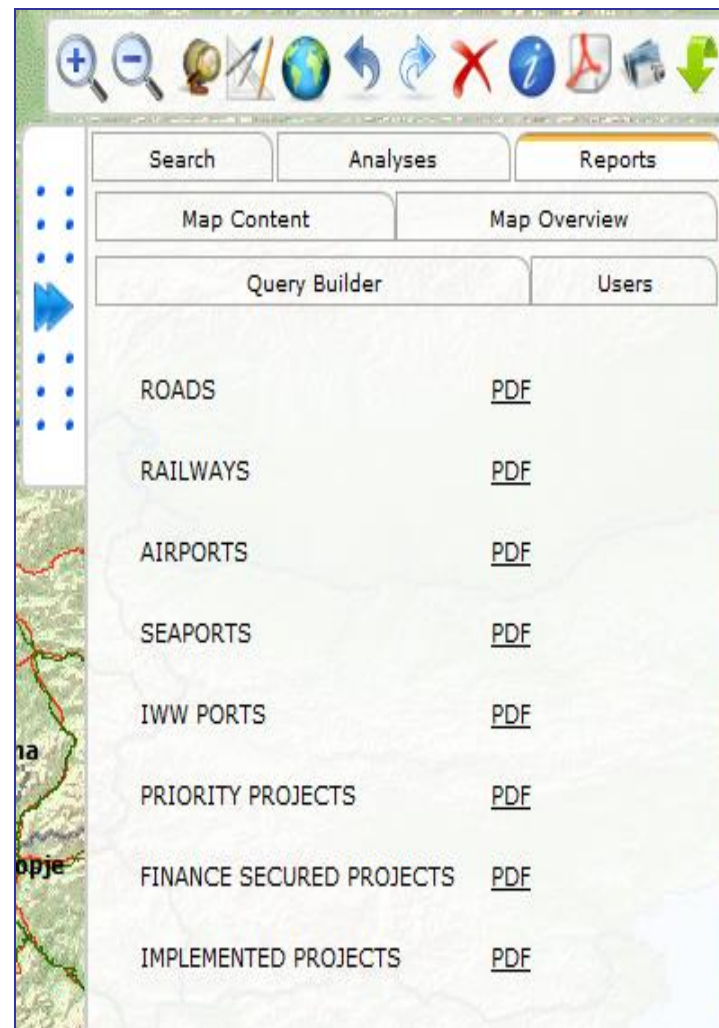


Spatial Analysis

Rail Passenger traffic flows



Reports

The screenshot shows the SEETO web application interface. At the top, there is a navigation bar with icons for search, zoom, and other map functions. Below the navigation bar, there are tabs for "Search", "Analyses", and "Reports". The "Reports" tab is currently selected. Under the "Reports" tab, there are sub-tabs for "Map Content", "Map Overview", "Query Builder", and "Users". The "Map Content" sub-tab is active, displaying a list of reports with links to PDF files. The reports listed are:

- ROADS [PDF](#)
- RAILWAYS [PDF](#)
- AIRPORTS [PDF](#)
- SEAPORTS [PDF](#)
- IWW PORTS [PDF](#)
- PRIORITY PROJECTS [PDF](#)
- FINANCE SECURED PROJECTS [PDF](#)
- IMPLEMENTED PROJECTS [PDF](#)

A map of the Balkan region is visible in the background of the interface.

List of reports

• ***Multi Annual Plan 2016***

- ***SEETO Priority Projects Sustainability report***
- ***Regional Participants profile overview***

- ***Flagship axes Initiative***
- ***SEETO Investment Report***
- ***SEETO Policy report***
- ***SEETO railway reforms report***
- ***SEETO Road safety report***

Thank you for your attention!

Ms. Ana Šimecki, Transport Planning Manager

Ms. Liljana Čela, Information Resources Manager

asimecki@seetoint.org

lcela@seetoint.org

www.seetoint.org