

Advancing Racial Equity & Support for Underserved Communities Through the Federal Government

Activities at USDOT

Patricia Hu

Director, Bureau of Transportation Statistics

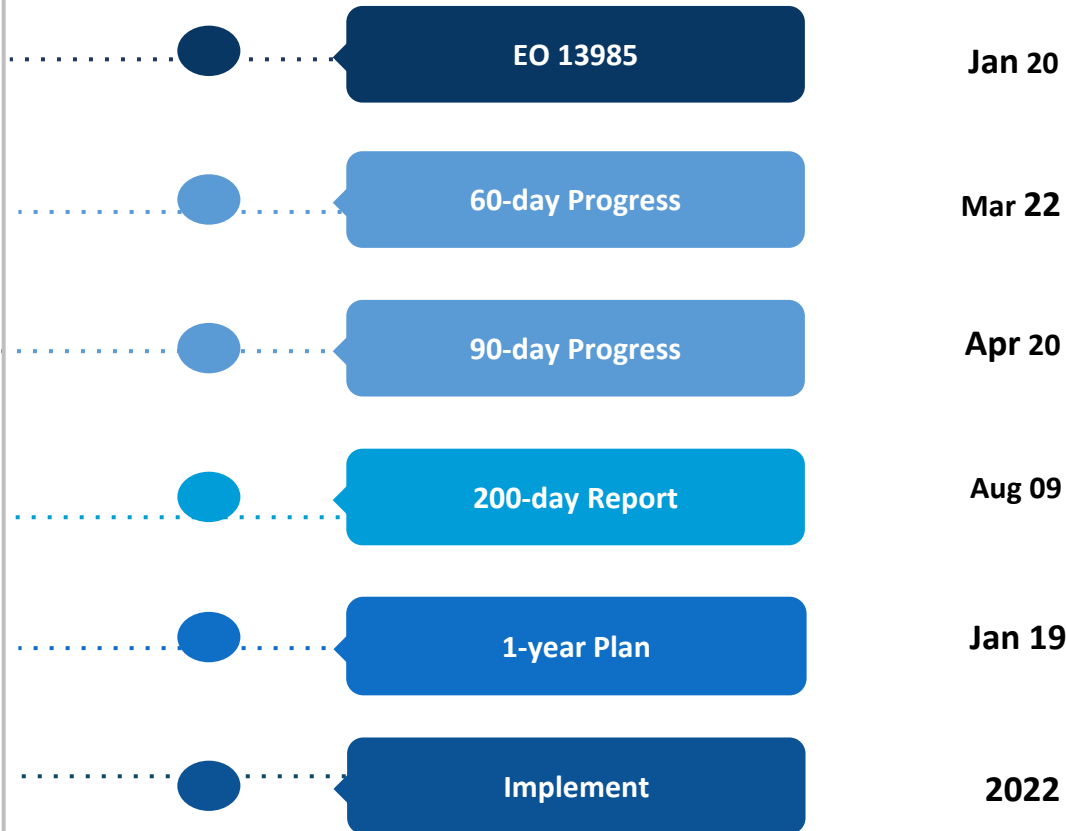
U.S. Department of Transportation

ITF Statistics Meeting | October 21, 2021

“Because advancing equity requires a systematic approach to embedding fairness in decision-making processes, executive departments and agencies must recognize and work to redress inequities in their policies and programs that serve as barriers to equal opportunity.”

—EXECUTIVE ORDER 13985

Comprehensive Approach To Embed **Equity** As A Core Part Of The Department's Decision-making Processes



USDOT's Equity Efforts Center On Three Populations

- 1. Underserved:** including but not limited to,
 - Black, Latino, and Indigenous and Native American persons,
 - persons with disabilities, persons who live in rural areas, and
 - persons otherwise adversely affected by persistent poverty
- 2. Overburdened:**
 - Those potentially experience disproportionate environmental harms and risks
- 3. Disadvantaged:**
 - Those disadvantaged based on variables including, but not limited to, the following:
 - persistent poverty
 - racial or ethnic segregation
 - Poor access to government contracting opportunities

Initial Assessment Areas

ASSESSMENT AREA 1:

Equitable distribution of grants and financial assistance

ASSESSMENT AREA 2:

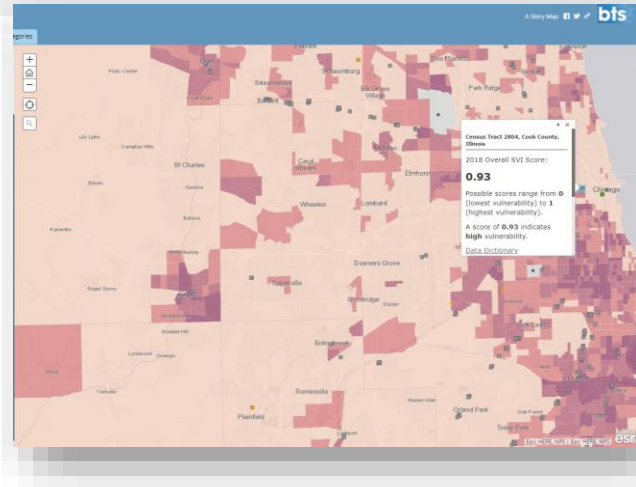
Building a workforce of the future in the transportation

ASSESSMENT AREA 3:

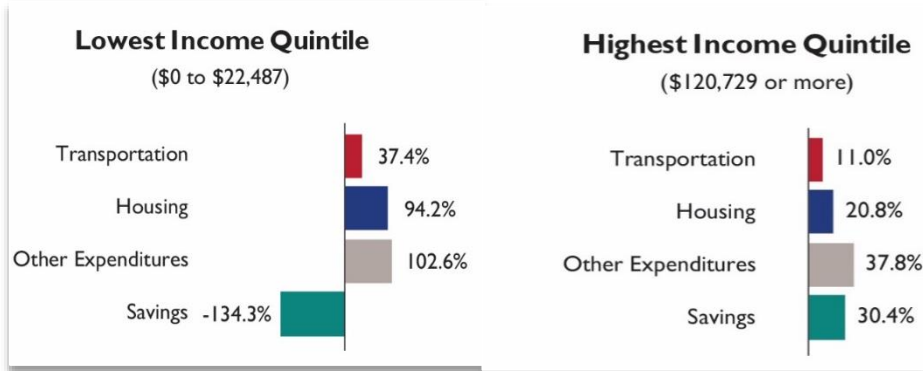
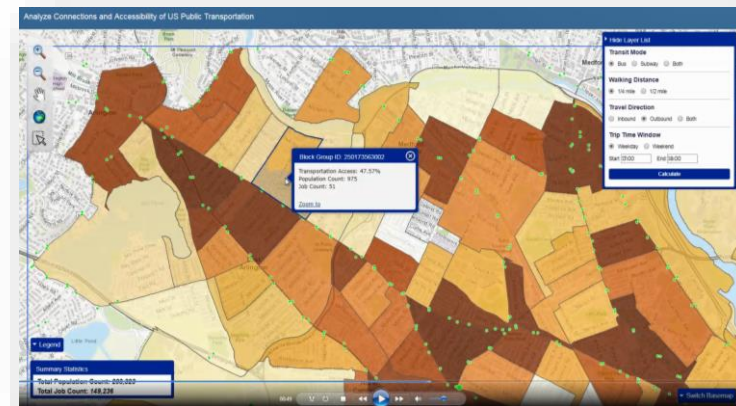
Building capital, networks and skills in black, indigenous, and other people of color (BIPOC) and women entrepreneurs

Examples of Geospatial Data for Equity Assessment

1. Who has access to potential vaccination facilities?



2. How accessible is public transportation?



3. How affordable is transportation to households of different income?

Three Common Data Barriers that Agencies Experience in Conducting Equity Assessments

- 1. Underutilized data** – Agencies have the data needed to answer a question or respond to an equity issue, but encounter barriers trying to use the data.
- 2. Inaccessible data** – Access to data is restricted by statute, in order to avoid compromising individuals' privacy.
- 3. Missing data** – Data needed to answer a question or respond to an issue does not exist at all, or is very low quality.

Challenges and Opportunities: Data and Assessment Method

■ Challenges

- Definitions and Equity Measures (e.g., accessible, safe, affordable, reliable)
- *“DOT data may not be able to provide an adequate baseline”* has been identified as a risk.
- Lack of data compatibility challenges data integration.
- Robust assessment methods are limited, at the local/regional levels.

■ Opportunities

- Leverage data sharing across the department and Federal Statistics System (e.g., BLS, HUD) through Interagency Council on Statistical Policy
- Interagency collaboration will foster the measurement of externalities.