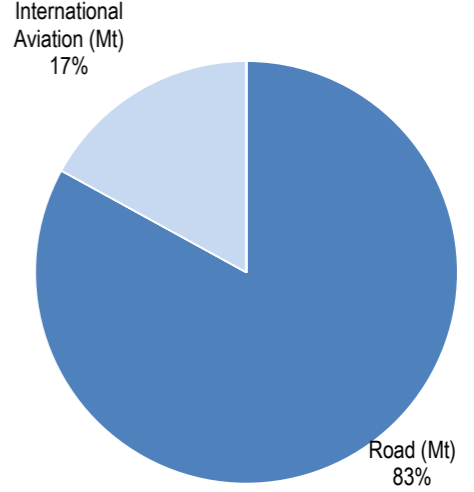
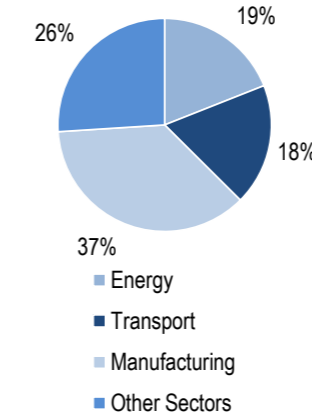
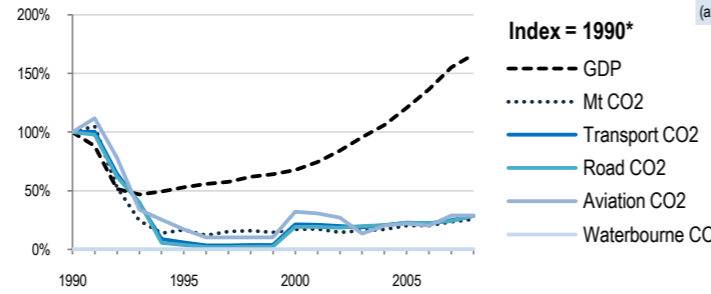
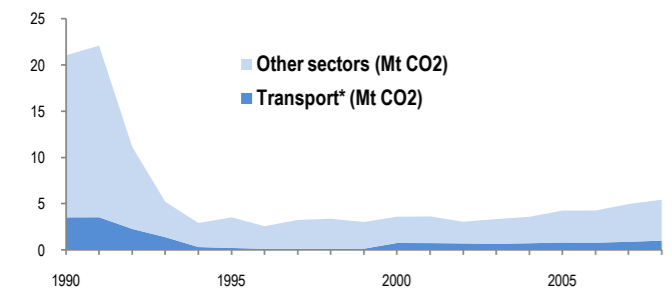


Armenia

EU-27 N. America Asia-Pacific Other ITF or OECD Top 10 non-ITF

Change 1990-2008*	Mt (axis set -50%,100%)	2008	T/capita	2008, Kg/\$2000 PPP	2008	2007-2008	(%Mt)	2008 Total CO ₂ *	2008 Transport CO ₂ *
Total CO ₂	-74%	5.43	-70%	1.76	-84%	0.30	9.5%	5.4Mt	0.30
Transport CO ₂	-72%	1	-67%	0.32	-83%	0.05	13.6%		0.05
Road CO ₂	-72%	0.83	-67%	0.27	-83%	0.05	16.9%		0.05
Aviation CO ₂	-71%	0.17	-67%	0.06	-83%	0.01	0.0%		0.01
Waterbourne CO ₂		0		0.00		0.00			0.00



Transport and the Economy	1990	1995	2000	2001	2002	2003	2004	2005	2006	2007	2008	1990-2008	%/year**	% 2007-2008
Population (millions)	3.55	3.22	3.08	3.07	3.06	3.06	3.06	3.07	3.07	3.07	3.08	-13%	-0.79%	0.33%
GDP PPP (billion 2000 US dollars)	11.01	5.81	7.46	8.18	9.26	10.55	11.66	13.28	15.04	17.10	18.26	66%	2.85%	6.78%
Road passenger km (million pkm)	0	0	1437	1678	1813	1959	2066	2223	2436	2521	2521	..	7.28%	0.00%
Road and Rail freight tkm (million tkm)	0	0	354	487	657	809	888	885	1100	1481	1805	..	22.58%	21.88%
Road pkm/capita	0	0	467	547	592	640	675	724	793	821	819	..	7.28%	-0.32%
Road and Rail freight tkm/\$ gdp	0	0	0.05	0.06	0.07	0.08	0.08	0.07	0.07	0.09	0.10	..	9.61%	14.13%
Passenger cars per 1000 inhabitants	1	0	96	30.80%	..

CO2 Emissions	1990	1995	2000	2001	2002	2003	2004	2005	2006	2007	2008	1990-2008	%/year**	% 2007-2008
IEA CO ₂ from fuel combustion (Mt)*	21.05	3.52	3.59	3.62	3.05	3.33	3.58	4.25	4.26	4.96	5.43	-74%	-7.25%	9.48%
... of which transport CO ₂ (Mt)*	3.52	0.21	0.75	0.74	0.7	0.66	0.72	0.8	0.78	0.88	1	-72%	-6.75%	13.64%
Transport* as a percentage of total	16.7%	6.0%	20.9%	20.4%	23.0%	19.8%	20.1%	18.8%	18.3%	17.7%	18.4%
Road (Mt)	2.93	0.11	0.56	0.56	0.54	0.58	0.6	0.67	0.66	0.71	0.83	-72%	-6.77%	16.90%
Rail (Mt)	0	0	0	0	0	0	0	0	0	0	0
Domestic Aviation (Mt)	0	0	0	0	0	0	0	0	0	0	0
International Aviation (Mt)	0.59	0.1	0.19	0.18	0.16	0.08	0.12	0.13	0.12	0.17	0.17	-71%	-6.68%	0.00%
Domestic Navigation (Mt)	0	0	0	0	0	0	0	0	0	0	0
International Shipping (Mt)	0	0	0	0	0	0	0	0	0	0	0
Other Transport (Mt)	0	0	0	0	0	0	0	0	0	0	0

GHG Emissions	1990	1995	2000	2001	2002	2003	2004	2005	2006	2007	2008	1990-2008	%/year**	% 2007-2008
UNFCCC GHG emissions (Mt CO ₂ eq.)*
UNFCCC GHG fuel combustion (Mt CO ₂ eq.)*
... of which transport GHG (Mt CO ₂ eq.)*
Road (Mt)
International Aviation (Mt)
International Shipping (Mt)

* includes emissions from international aviation and international maritime bunkers - there is no internationally agreed allocation mechanism for these and totals here are indicative of the scale of these emissions, not of their national "ownership" ** available yrs.