

# 4<sup>th</sup> ITF Statistical Meeting

**Item 7 – ITF visualisation tool**

14-15 March 2017, PARIS

# Compare Your Country

OECD tool which allows users to freely select among 19 transport-related indicators for more than 50 countries:

- Show country information on a world map
- Compare trends for up to 4 countries
- Create country rankings

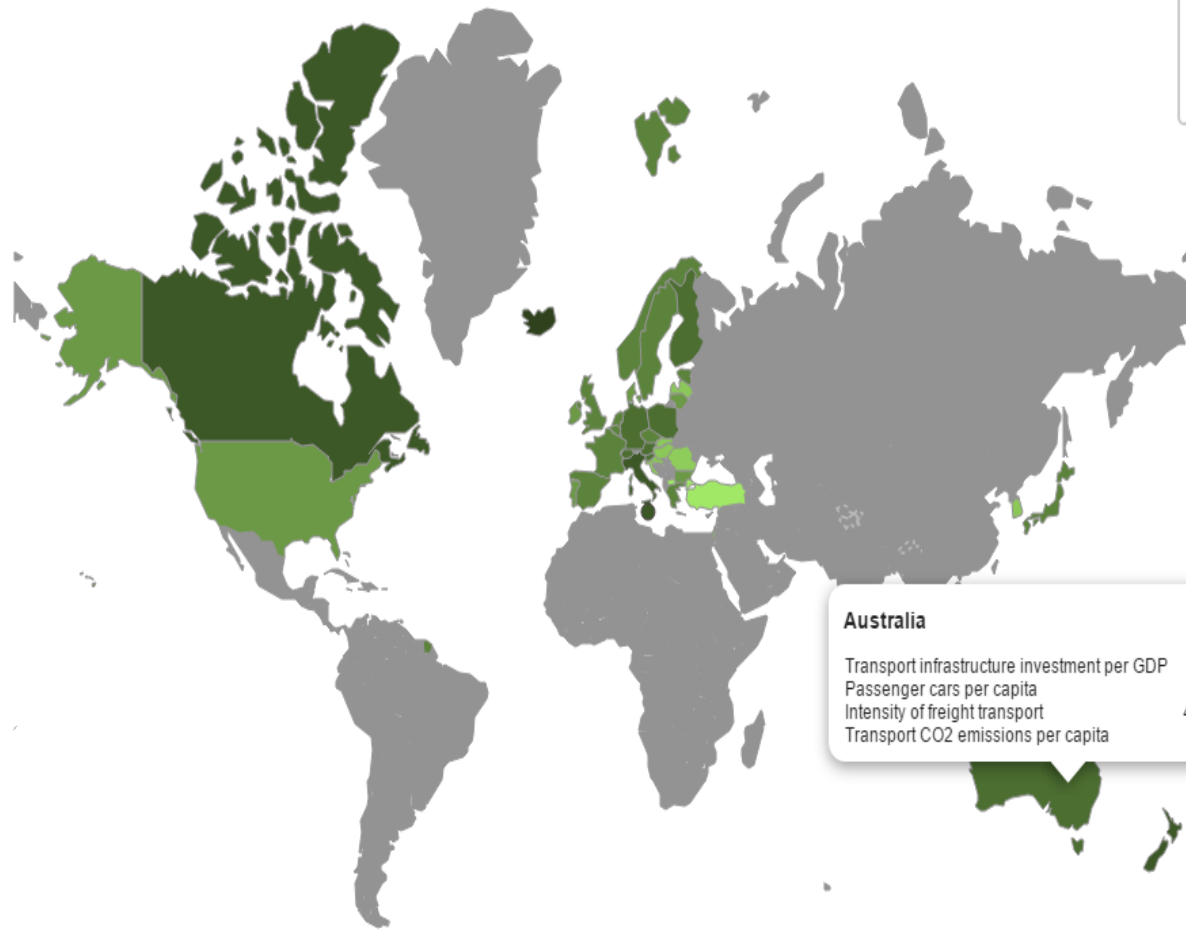


[https://www.compareyourcountry.org  
/key-transport-indicators](https://www.compareyourcountry.org/key-transport-indicators)





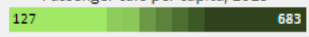
- Transport infrastructure investment per GDP
- Passenger cars per capita
- Intensity of freight transport
- Transport CO2 emissions per capita



**Australia** ✕

Transport infrastructure investment per GDP	14 USD
Passenger cars per capita	570
Intensity of freight transport	483 t-km/GDP
Transport CO2 emissions per capita	4 tonnes

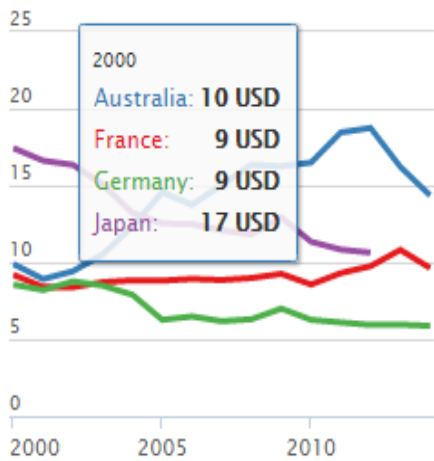
Passenger cars per capita, 2015



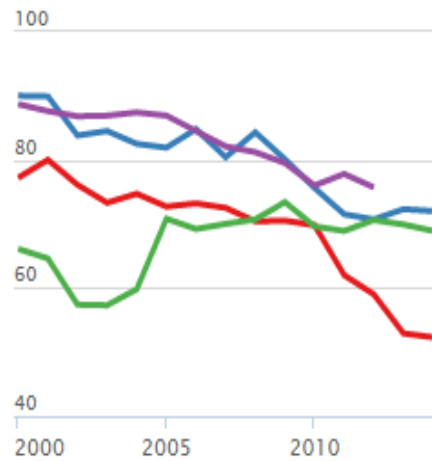
Country	Transport infrastructure investment per GDP, USD, 2014	Per capita infrastructure investment, USD, 2014
Azerbaijan	30	233
Georgia	23	104
Romania	21	206
Albania	19	89
Australia	14	874
Switzerland	14*	1180*
Croatia	14*	190*
Latvia	14	216
Estonia	13*	254*
Greece	13*	276*
Lithuania	13	222
Norway	12*	1225*
Poland	12*	163*
Russia	12*	183*
Slovenia	12	281
Japan	11*	496*
Korea	11*	274*
Serbia	11	68
Slovak Republic	11	202
France	10	410
Hungary	10*	137*
Turkey	10	105
Denmark	9	532
Finland	9	432
India	9*	14*
Ireland	9*	531*
Luxembourg	8	947
Moldova	8*	18*
Bulgaria	7	58
Czech Republic	7	135

Country	Rail share of infrastructure investment, %, 2014	Rail freight modal share, %, 2015	Rail passenger modal share, %, 2015
Austria	77.2	42.5	-
Slovenia	68.1	66.9	2.7*
Belgium	67.4	13.3*	7.5*
Hungary	60.9*	18	9.5
Italy	58*	14.3*	6.1
Lithuania	53.8	34.2	1.3
Denmark	51.3	13.8*	9.6*
United Kingdom	50.5	11.2*	8.2*
Russia	49.6*	59.6	48.8
Luxembourg	48.1	2.7	-
Switzerland	47.2*	40.9*	17.1*
France	46.8	15.3*	8.9*
Czech Republic	42.5	19.9	9.4
Latvia	42	53.2	20.3
Spain	41.6	3.6*	6.7
Korea	40.7*	7.1*	15.6*
India	40.6*	31.5*	11.6
Sweden	38.9	35.1	8.9
Estonia	37.3*	34*	9.9*
Finland	36.2	25.6	5.3
Slovak Republic	33.4	19.8	9.4
Netherlands	30.8*	6.9	8.6*
Croatia	30.1*	14.3	22
Australia	28	63.7	5
Moldova	26.1*	15.9	5.8
Germany	25.8	22.6*	8.3*
Portugal	25.2*	7.1	4.2*
Japan	24.3*	9.1*	30.5*
Georgia	22.9	66*	6.4
Turkey	22	3.4	1.6
Bulgaria	20.4	9.7	13.2
Norway	17.9*	13.3*	4.9*

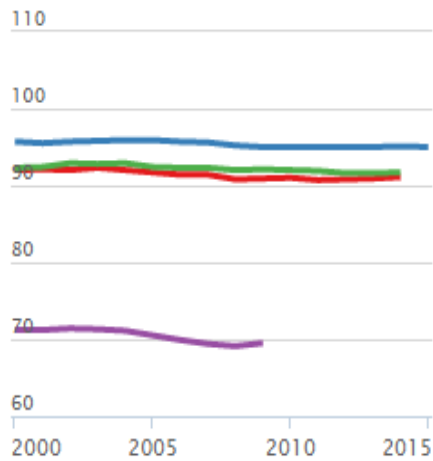
Transport infrastructure investment  $\rho$  ▼



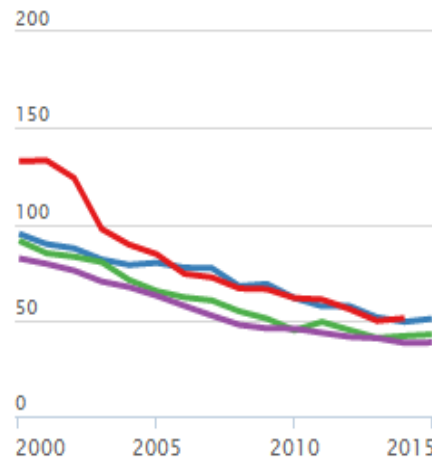
Road share of infrastructure investment ▼



Road passenger modal share ▼



Road fatalities per capita ▼



**Definitions**

Albania	China	Hungary	Malta	Serbia
Armenia	Croatia	Iceland	Mexico	Slovak Republic
<b>Australia</b>	Czech Republic	India	Moldova	Slovenia
Austria	Denmark	Ireland	Montenegro	Spain
Azerbaijan	Estonia	Israel	Netherlands	Sweden
Belarus	FYROM	Italy	New Zealand	Switzerland
Belgium	Finland	<b>Japan</b>	Norway	Turkey
Bosnia and Herzegovina	<b>France</b>	Korea	Poland	Ukraine
Bulgaria	Georgia	Latvia	Portugal	United Kingdom
Canada	<b>Germany</b>	Lithuania	Romania	United States
Chile	Greece	Luxembourg	Russia	

# Thank you

Rachele POGGI

T +33 (0)1 45 24 87 40

[rachele.poggi@itf-oecd.org](mailto:rachele.poggi@itf-oecd.org)

Office address

2 rue Andre Pascal

75775 Paris Cedex 16