



U.S. Department of Transportation  
Bureau of Transportation Statistics

# Connectivity of Passenger Travel and Freight Movement

Bureau of Transportation Statistics  
U.S. Department of Transportation

April 18, 2019

# Intermodal Passenger Connectivity Database (IPCD)

---

- A nationwide data base of over 14,000 unique passenger transportation facilities, including bike-share stations
- Each facility is geo-coded to determine passenger travel connectivity
- Connectivity is determined as:
  - CONNECTED: Within 1 city block
  - NEARLY CONNECTED: Greater than 1 city block but less than 2
  - NO CONNECTED: Greater than 2 blocks

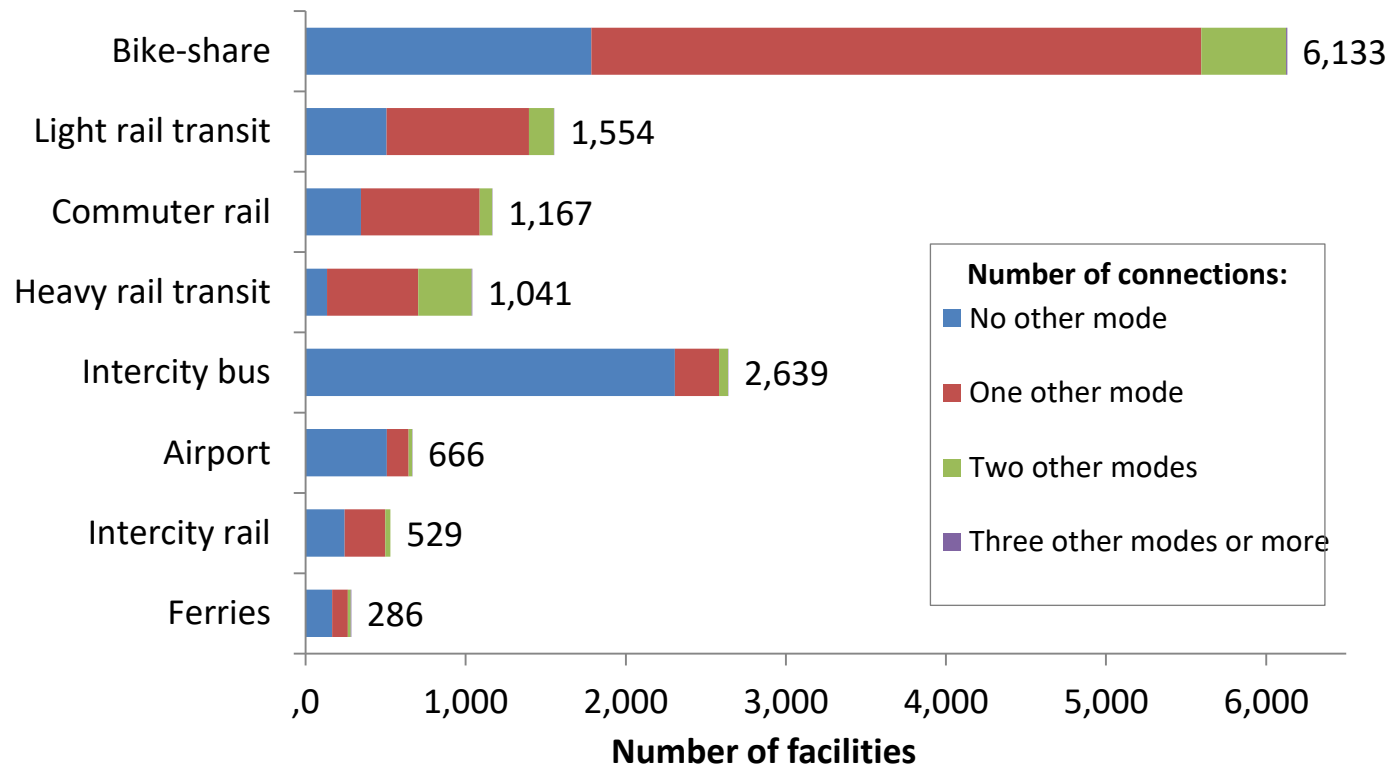
# How well is passenger travel connected?

---

- 43 percent of the facilities lack connectivity to another passenger mode
- 48 percent connect to one other mode
- 9 percent connect to two other modes, and
- 0.2 percent connect to three other modes (e.g., bus, air, rail, ferry, or bikeshare)

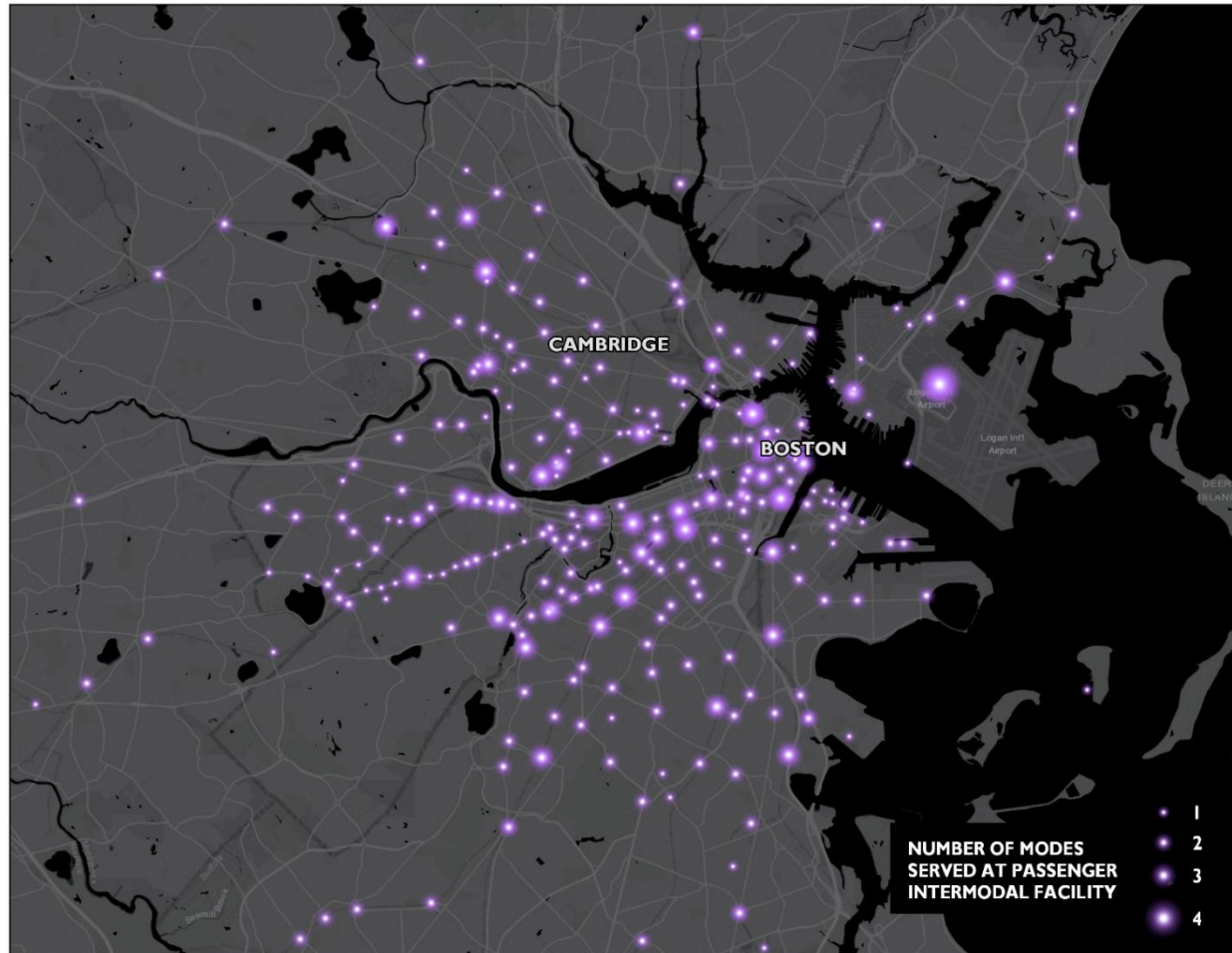
Source: U. S. Bureau of Transportation Statistics.

# Bike-share stations are the most connected, while intercity bus is the least.



Source: U. S. Bureau of Transportation Statistics.

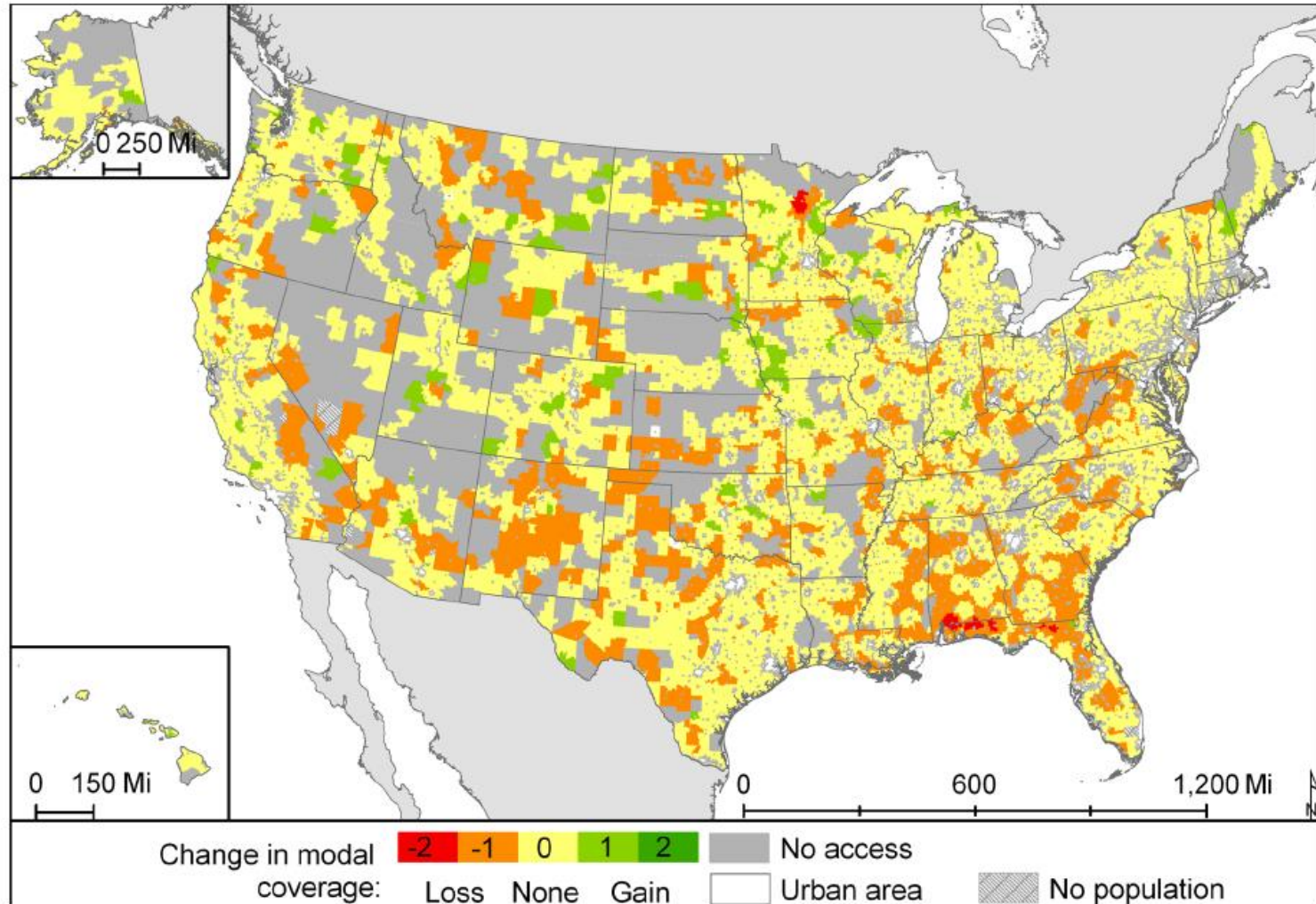
# Passenger Connectivity in Boston, MA Vicinity



Source: U. S. Bureau of Transportation Statistics.

# Rural Americans are losing intercity access

Change in the Number of Intercity Transportation Modes Serving a Rural Area, 2005–2010



Source: Bureau of Transportation Statistics, U.S. Department of Transportation.

# Intermodal Freight Transfer Facilities Database

- A nationwide data base of 3,900 intermodal freight transfer facilities where goods are transferred from one mode to another.
- Includes data on mode, cargo, commodity, and transfer direction.

Facility Type	Number	Percentage
Air	232	6%
Port	2,037	52%
Rail	1,581	41%
Truck	50	1%
Total	3,900	100%

# Freight Movement by Mode





# Challenges in developing and updating connectivity information

---

- Detailed geographic information that enables the determination of what intermodal connecting is possible.
- But, no data on usage, especially on freight volume and commodities transferred.
- Sustainable methods for updating and maintaining information needed. For example, can we link IPCD to the existing data feeds (e.g., National Transit Map) to reduce manual web scrapping?