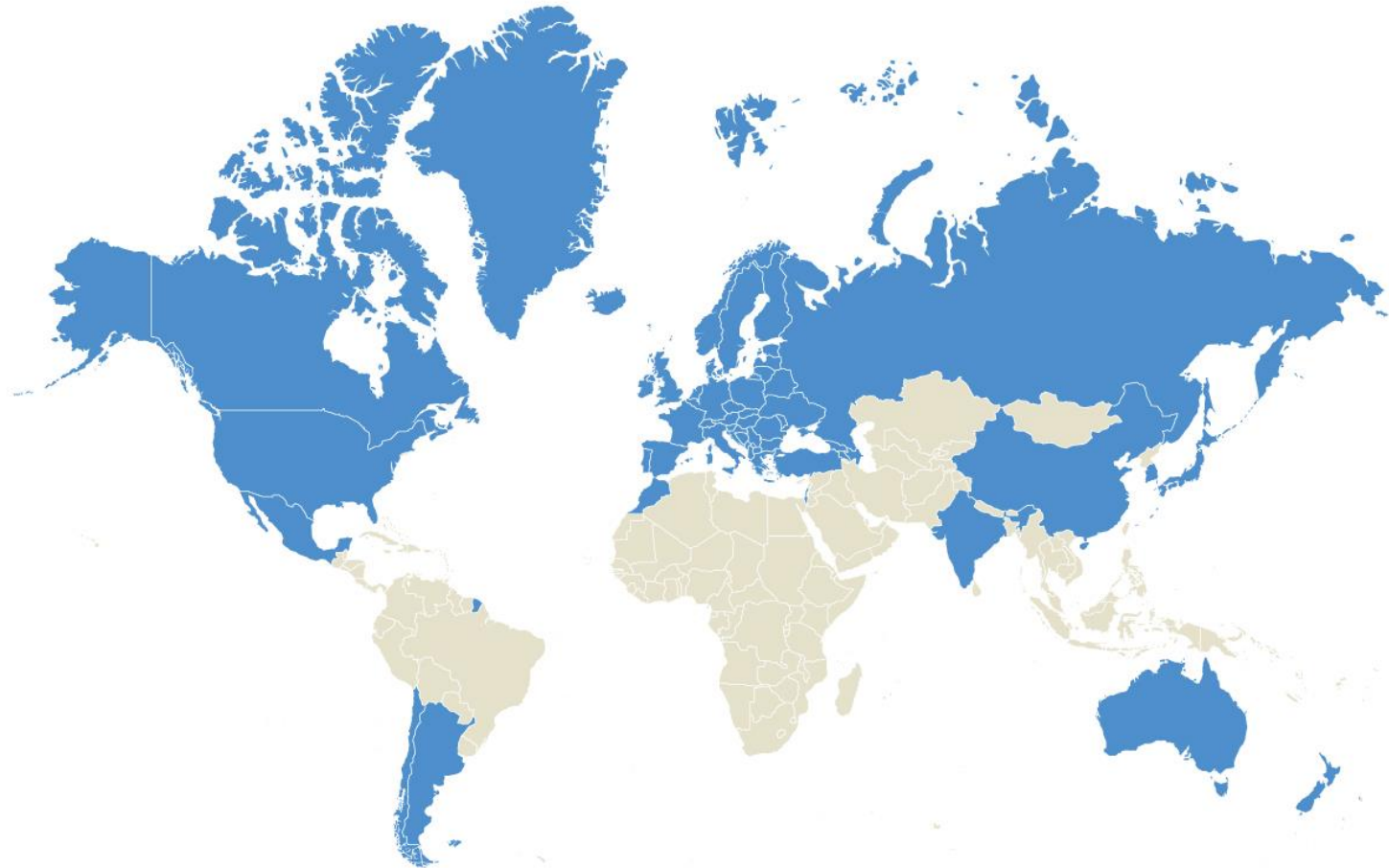


# **3<sup>rd</sup> ITF Statistical Meeting 17-18 March 2016- PARIS**

3.3 – Investment in transport infrastructure  
2014 data collection

## 57 ITF Member countries



## Geographical coverage of the investment questionnaire

Questionnaire send out 14 January / dead line 5 February –  
Refer to 2014 data

- Questionnaire not sent to ARG, CHL, CHN, ISR, MAR
- No data available for BIH, LIE
- Nos answers received from BLR, UKR

**We expect data for 48 countries**




## Response rate to the investment questionnaire

- 39 countries provided an answer (32 last year).
- 19 provided complete maintenance data (against 15)
- 7 provided partial maintenance data
- 8 show road maintenance only

Some major countries do not provide maintenance at all

Still would like to underline perfect submissions from:

Croatia, France, Sweden, Slovakia, Serbia ,Turkey



## Where do we still need to improve

### Definition and data coverage

- On going work

### Complementary information

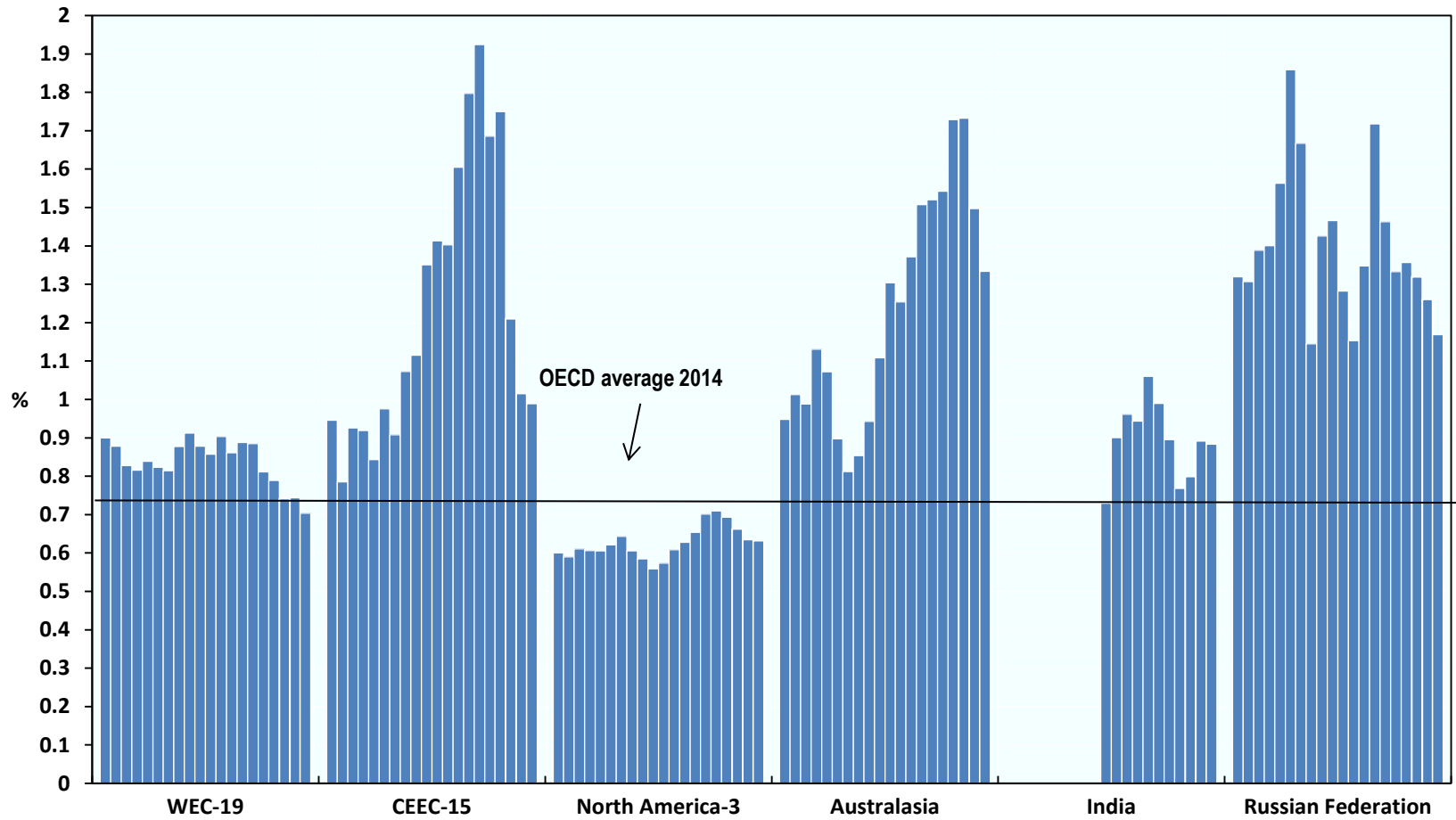
- Need to improve the metadata

### Deflators used

- They are needed to compare data series
- Wrong deflator can impact seriously results
- We need you to help updating our deflators list

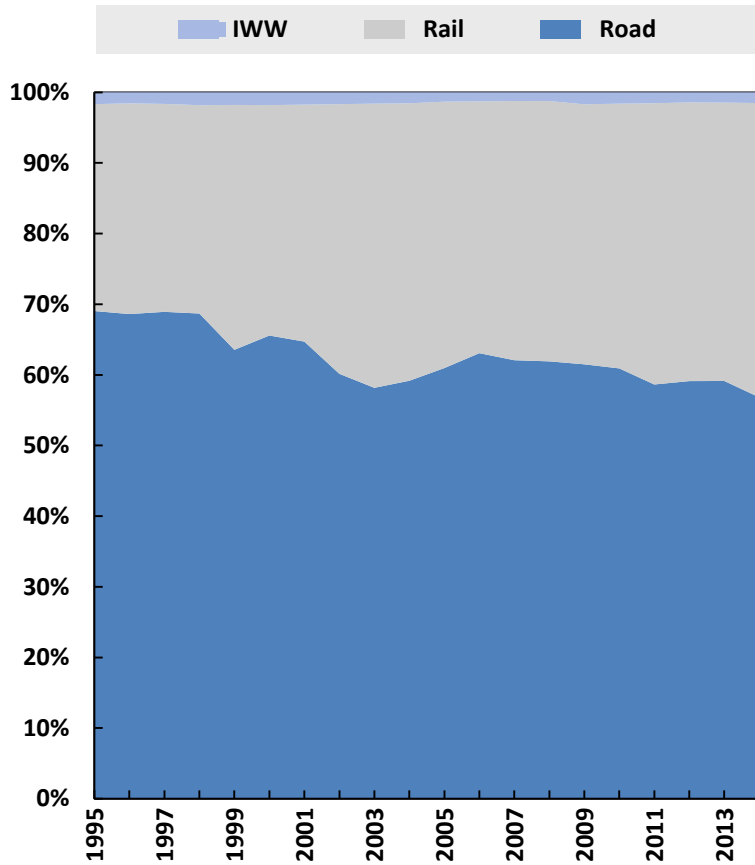


## Investment in Inland Transport Infrastructure by region 1995-2014 as a percentage of GDP

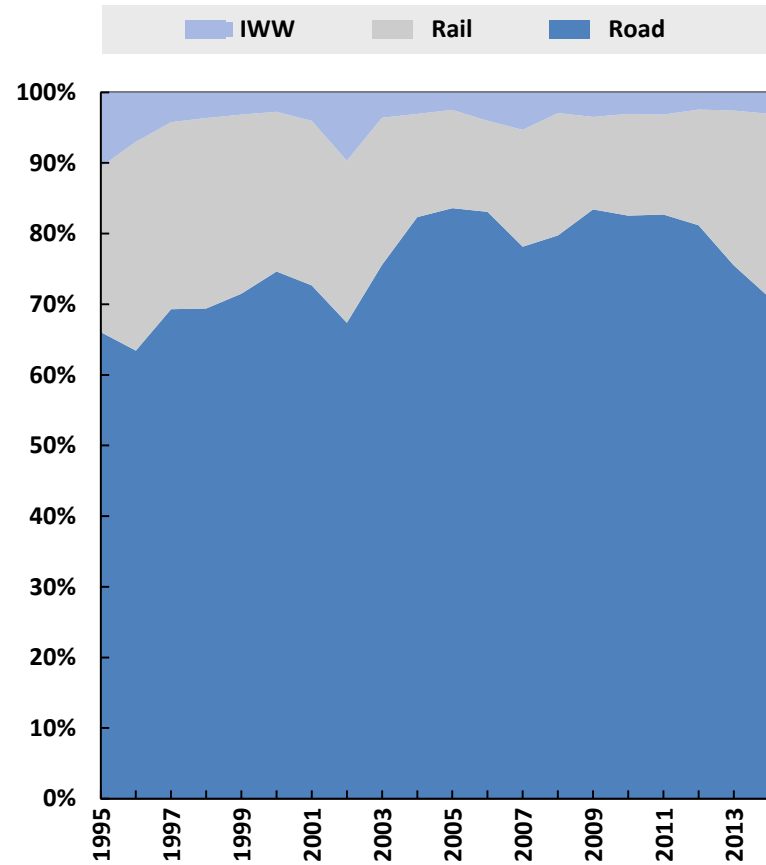


# Modal Split Evolution

Western European countries



Central and Eastern European countries



## Next steps

- Improve the overall picture of investment trends.
- Improve the list of deflators used
- Gather more complementary information

## Disseminate results

- Use OECD Corporate databases (OECD.Stat)
- Data is always included in the ITF Flag ship publication 'Transport Outlook'
- Produce a statistics brief on latest trends before the summer.

## Improve definition and coverage

How to move forward? Suggestions?





# Thank you

Mario BARRETO  
T +33 (0)1 45 24 97 22  
[mario.barreto@itf-oecd.org](mailto:mario.barreto@itf-oecd.org)

Office address  
2 rue Andre Pascal  
75775 Paris Cedex 16