

3rd ITF Statistical Meeting 17-18 March 2016- PARIS

6.1- ITF Annual trends data

What do we collect

One page questionnaire (15 variables)

- Freight and passenger transport by inland transport modes
- Road safety
- Container transport (rail and sea)
- Short sea shipping

We make results available 10 month after the period.



Geographical coverage Annual Trends Questionnaire

Send out 27 July 2015 / deadline 18 Sep. 2015 – 2014 data

- Questionnaire not sent to ARG, CHL, CHN, ISR, MAR
- Nos answers received from BLR, UKR

We expect data for 50 countries



Response rate to Annual Trends Questionnaire

- 45 countries provided an answer
- 9 countries provides data more than 1 year late (2013)

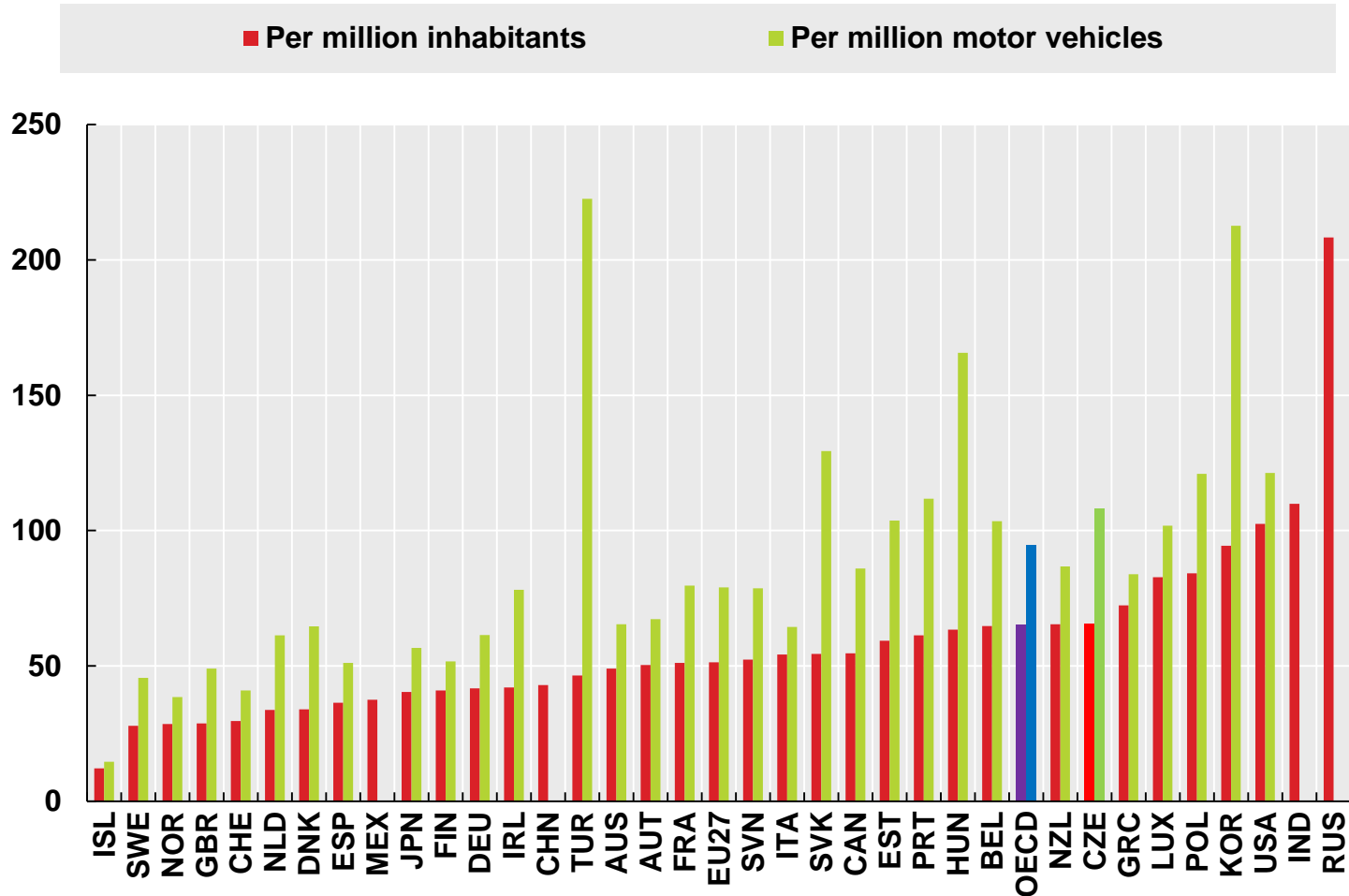
Excellent response rate

Special award to Central and Eastern Europe ITF countries:
Timeliness and data coverage



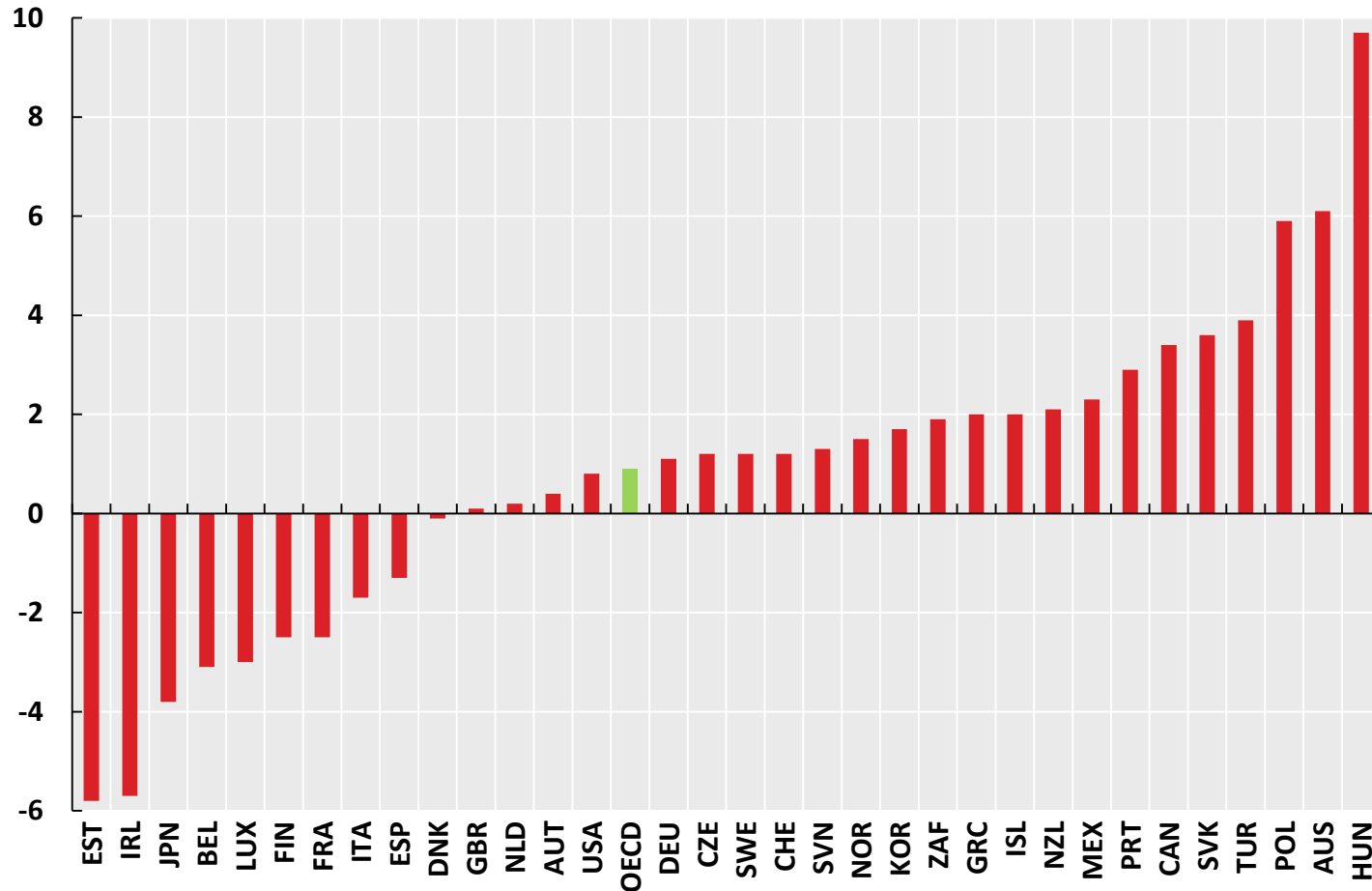
Road Fatalities

2014 or latest available year



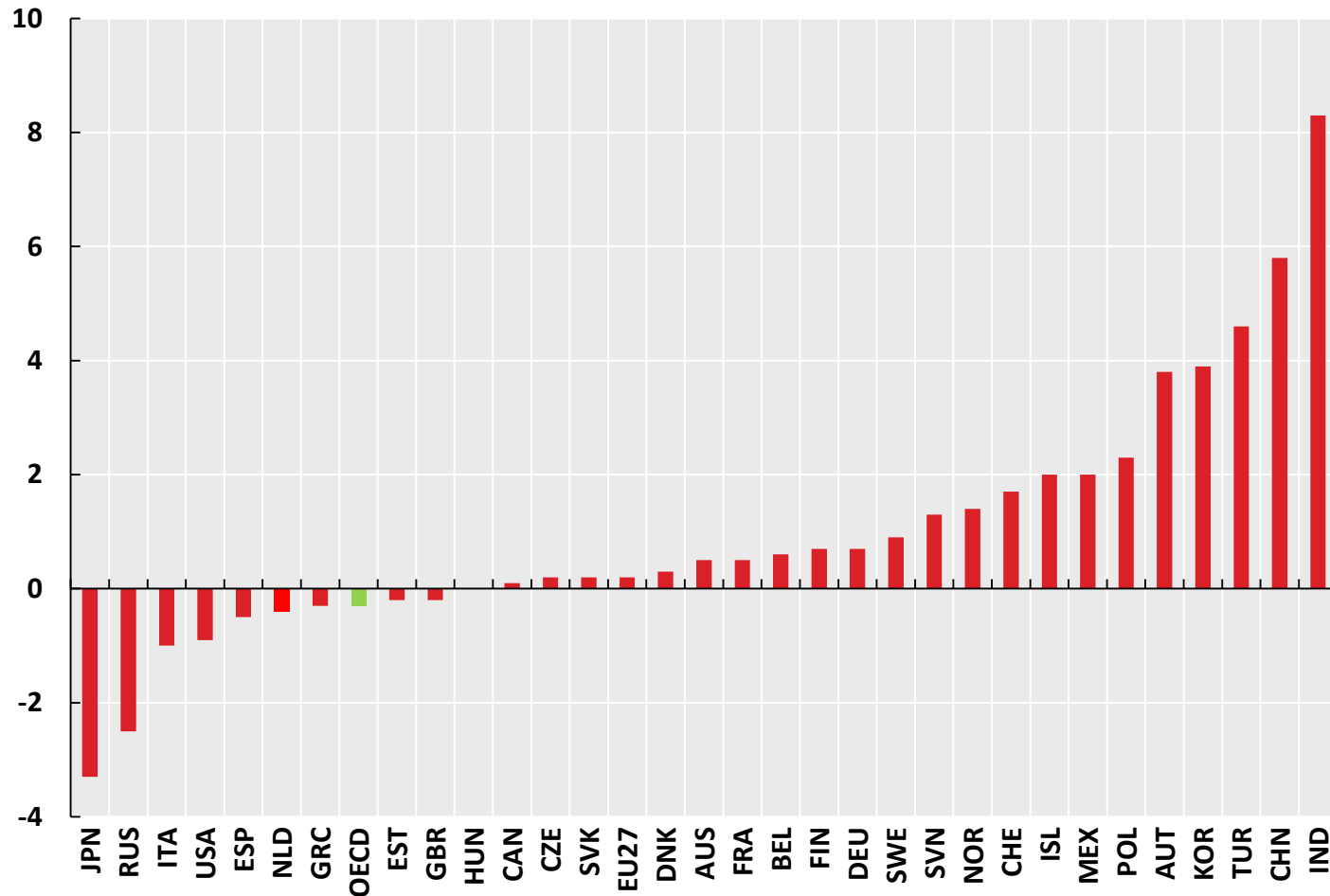
Inland goods transport

Average annual growth rate in percentage
2004-2014 or latest available period



Inland passenger transport


Average annual growth rate in percentage
2004-2014 or latest available period



Improvements to be done

- Approach the 5 new countries for up-to-date series
- Contact the 2 missing countries
- On-going development of our metadata

Dissemination

- This information is used and published in the ITF outlook
 - Partly in the OECD factbook
 - Is core information for calculating indicators
 - All data is available on OECD.Stat
- 

Thank you

Mario BARRETO
T +33 (0)1 45 24 97 22
mario.barreto@itf-oecd.org

Office address
2 rue Andre Pascal
75775 Paris Cedex 16