

7.1 ITF Statistical Activities: Data collections

*7th ITF International Transport
Statistics Meeting*

OECD Conference Centre – Paris, France

October, 21st and 22nd 2021

63 ITF Member Countries



ITF members: Albania, Argentina, Armenia, Australia, Austria, Azerbaijan, Belarus, Belgium, Bosnia-Herzegovina, Bulgaria, Canada, Chile, China (People's Republic of), Colombia, Croatia, Czech Republic, Denmark, Estonia, Finland, France, Georgia, Germany, Greece, Hungary, Iceland, India, Ireland, Israel, Italy, Japan, Kazakhstan, Korea, Latvia, Liechtenstein, Lithuania, Luxembourg, Malta, Mexico, Republic of Moldova, Mongolia, Montenegro, Morocco, Netherlands, New Zealand, Republic of North Macedonia, Norway, Poland, Portugal, Romania, Russian Federation, Serbia, Slovak Republic, Slovenia, Spain, Sweden, Switzerland, Tunisia, Turkey, Ukraine, United Arab Emirates, the United Kingdom, the United States and Uzbekistan.

Observer country: Brazil

ITF Databases: Annual trends in the transport sector

❑ Survey coverage:

- Units: t-km, passenger-km, TEU, road accidents
- Modes: rail, road, IWW, maritime, pipelines
- Years: 1970 - 2020

❑ 2020 data collection:

- July 2021: Requests sent to **54** countries
- October 2021: Received data from **48** countries ➡ *missing 6*



ITF Databases: Investment in transport infrastructure

❑ Survey coverage:

- Subjects: investment, maintenance spending and capital value
- Modes: road, rail, IWW, maritime, airports
- Years: 1992 – 2019

❑ 2019 data collection

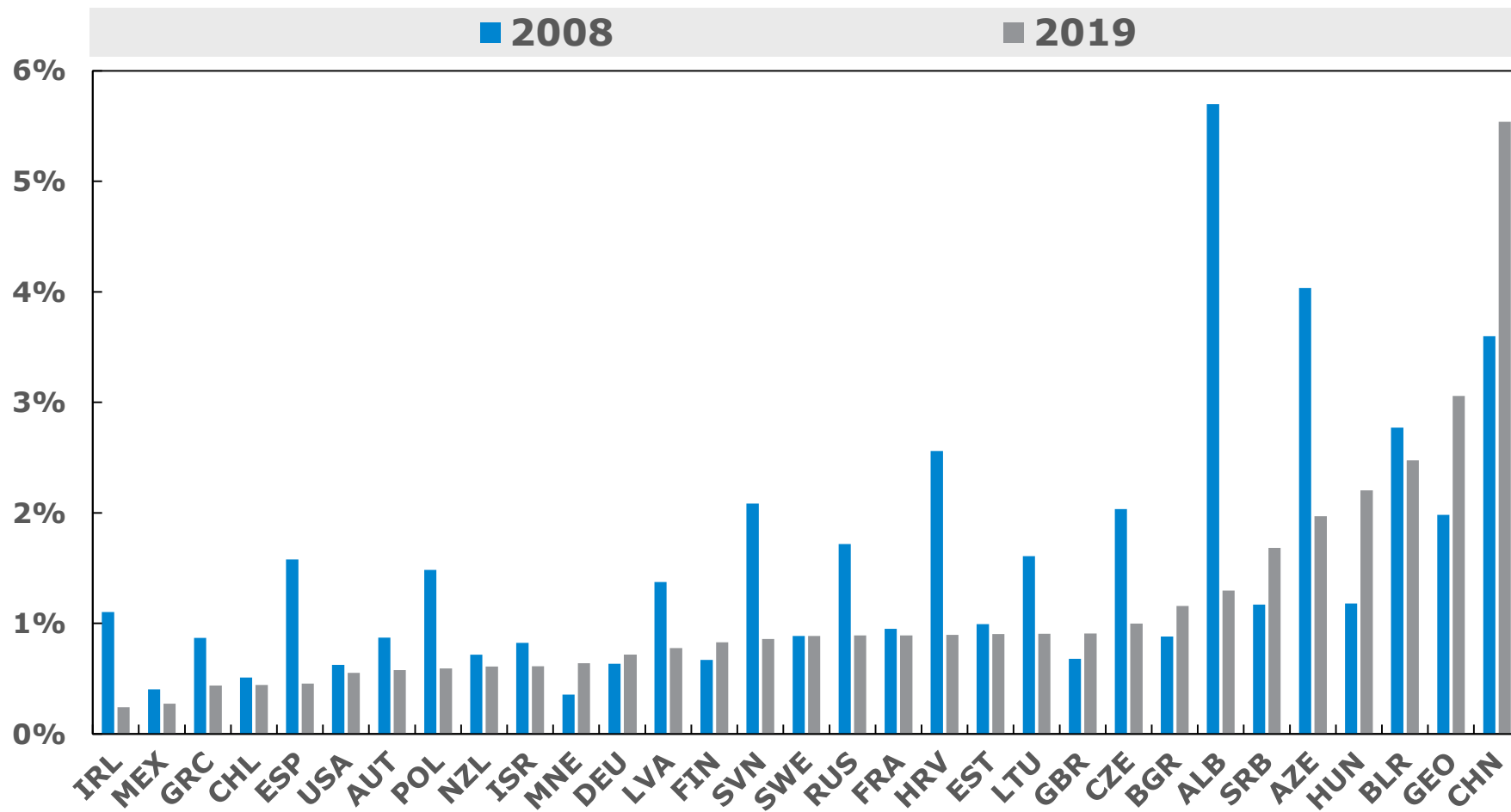
- January 2021: Requests sent to **55** countries
- April 2021: Received data from **42** countries ➔ *missing 13*

❑ Capital value data

- Collected since 2017
 - We are improving the number of countries
 - Excellent data coverage in Finland, France, Germany, Israël, Latvia, New Zealand, North Macedonia, Norway, Sweden and the United States
-

Investment in inland transport infrastructure in 2008 and 2019

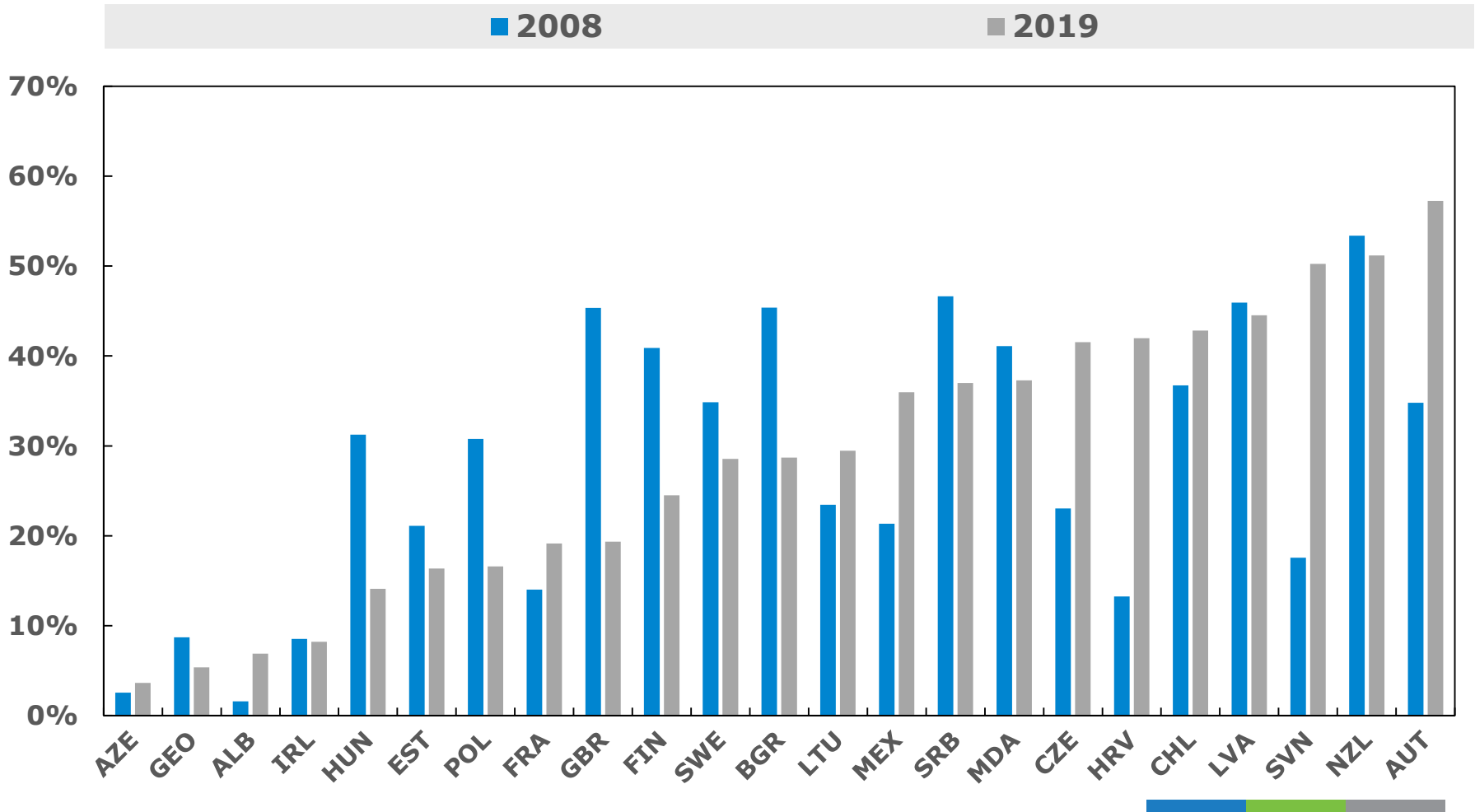
Current prices, percent of GDP



Note: Ireland and Chile data refer to road investments only

Public maintenance spending on roads as share of total road expenditure in 2008 and 2019

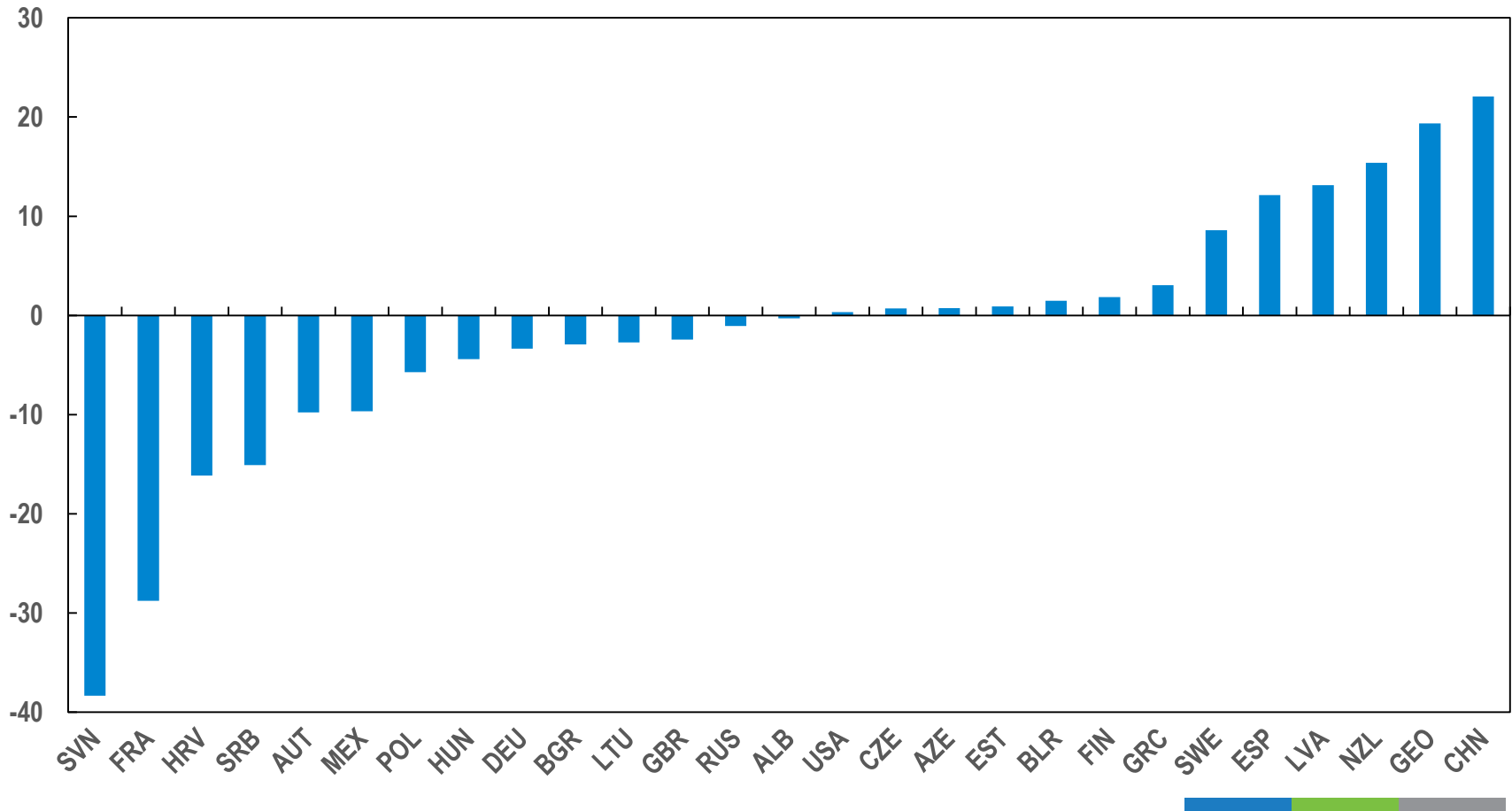
Current prices, percent



Shift between road and rail:

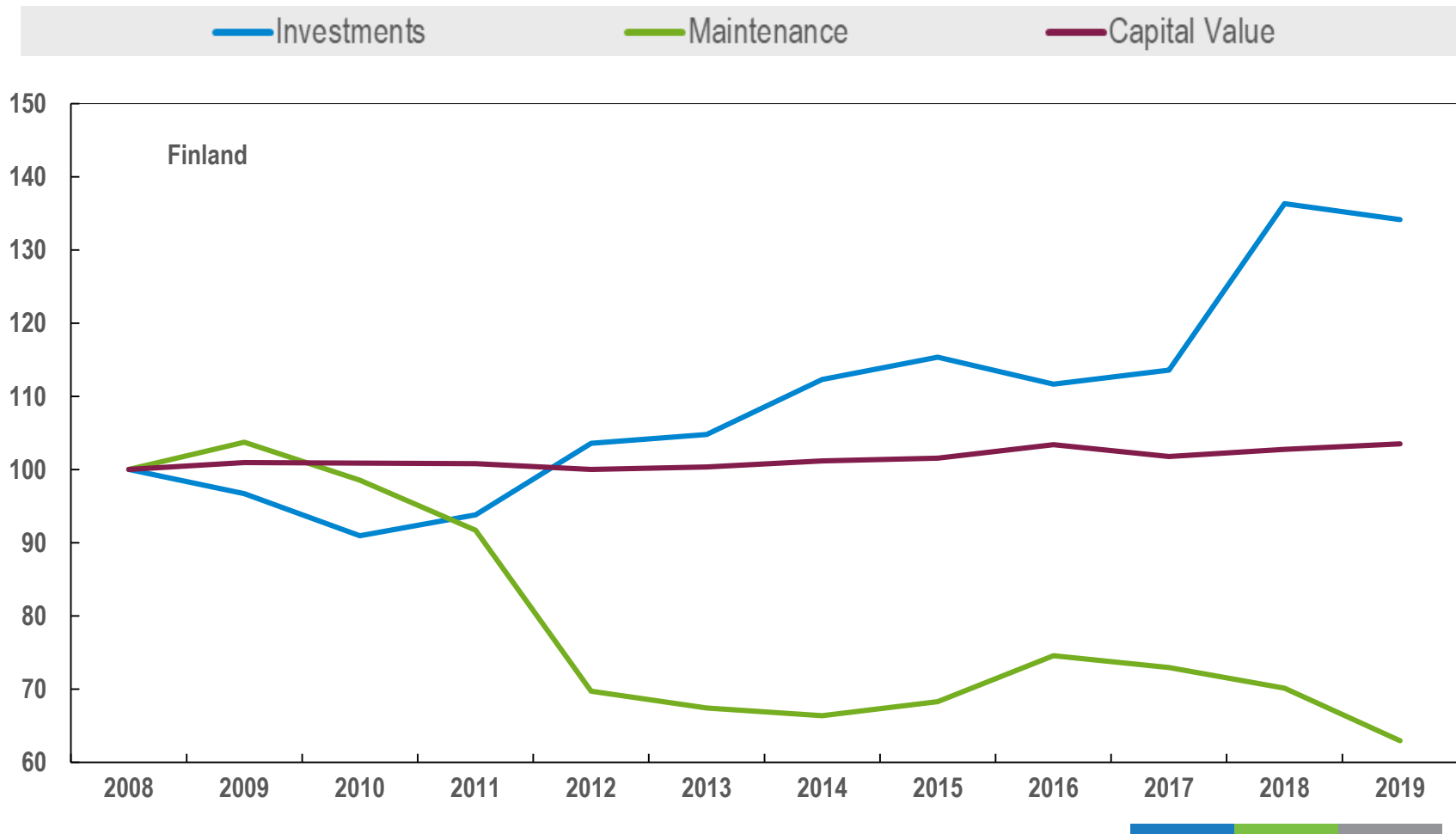
**Change in road share of inland transport infrastructure investments
between 2008 and 2019**

Current prices, difference



Capital value, investment and maintenance spending for road infrastructure by country 2008-2019

Constant 2010 prices, 2008=100



ITF Databases: Short-term trends

□ Survey coverage:

- Units: t-km, passenger-km, v-km, new vehicles, fuel use, road fatalities
- Modes: rail, road, IWW
- Quarters: Q1 1994 – Q2 2021

□ 2021, 2nd quarter data collection:

- September 2021: Requests sent to **54** countries
- October 2021: Received data from **44** countries



Transport Performance Indicators:

90 indicators calculated based on existing data

Transport infrastructure

Transport equipment

Transport measurement

Traffic

Economic and social

Safety

Energy and Environment



Data Dissemination:

OECD public statistics browser: <http://stats.oecd.org>

OECD iLibrary: <http://www.oecd-ilibrary.org/statistics>

Stats Brief on Global Trade: <https://www.itf-oecd.org/signs-recovery-global-trade-august-2020>

Key Transport Statistics Leaflet: <https://www.itf-oecd.org/key-transport-statistics-2021>

Thank you

Rachele Poggi
T +33 (0)1 73 31 25 54
E Rachele.poggi@itf-oecd.org

Postal address
2 rue André Pascal
F-75775 Paris Cedex 16

Aurélie Kopacz
T +33 (0)1 73 31 25 22
E aurelie.kopacz@itf-oecd.org