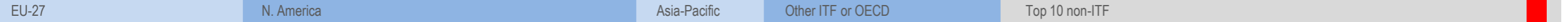
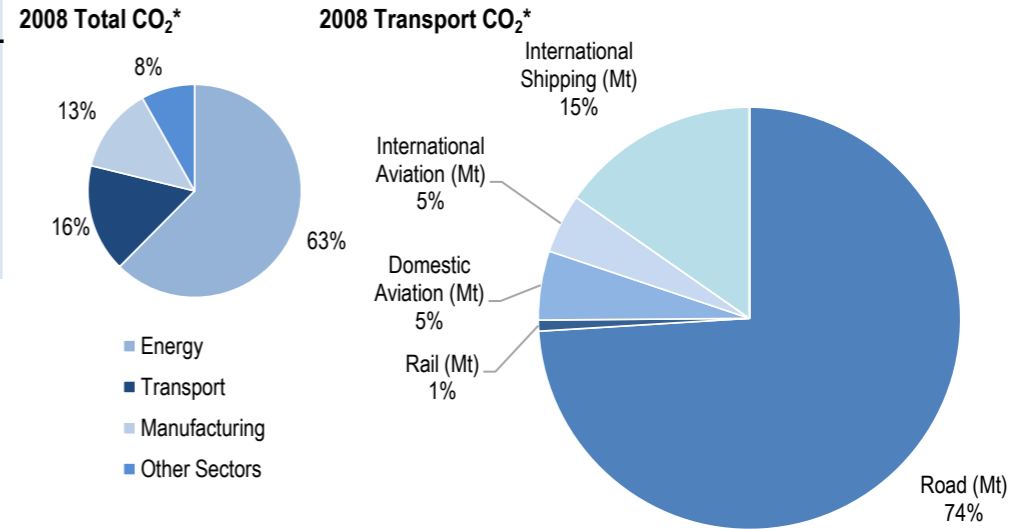
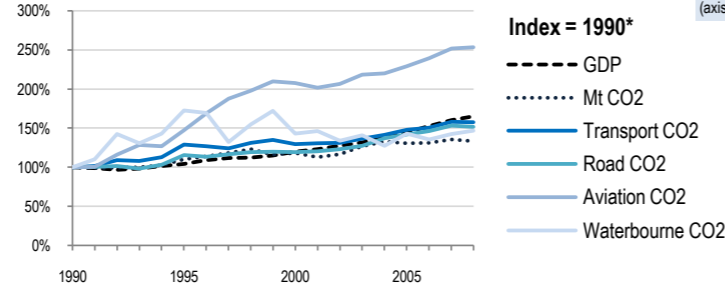
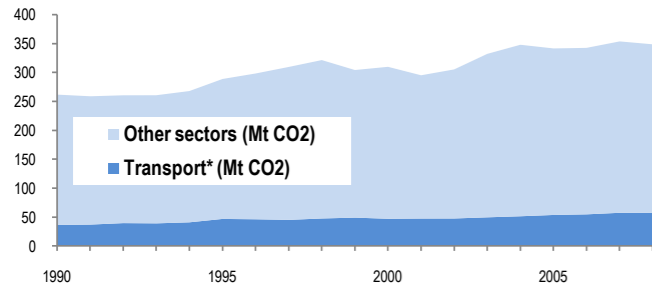


South Africa



Change 1990-2008*	Mt (axis set -50%,100%)	2008	T/capita	2008, Kg/\$2000 PPP	2008	2007-2008	(%Mt)
Total CO ₂	33%	348.76	-4%	7.16	-19%	0.66	-1.4%
Transport CO ₂	58%	57.15	14%	1.17	-5%	0.11	-0.3%
Road CO ₂	51%	42.3	9%	0.87	-8%	0.08	-1.1%
Aviation CO ₂	153%	5.62	83%	0.12	53%	0.01	0.5%
Waterbourne CO ₂	47%	8.74	6%	0.18	-11%	0.02	3.1%



Transport and the Economy	1990	1995	2000	2001	2002	2003	2004	2005	2006	2007	2008	1990-2008	%/year**	% 2007-2008
Population (millions)	35.20	39.12	44.00	44.81	45.25	45.80	46.35	46.89	47.39	47.85	48.69	38%	1.82%	1.76%
GDP PPP (billion 2000 US dollars)	321.98	336.11	385.64	396.19	410.72	423.53	444.13	466.18	490.99	516.02	531.82	65%	2.83%	3.06%
Road passenger km (million pkm)
Road and Rail freight tkm (million tkm)
Road pkm/capita
Road and Rail freight tkm/\$ gdp
Passenger cars per 1000 inhabitants	97	97	87	87	92	..	93	98	103	108	0.63%	..
CO2 Emissions														
IEA CO ₂ from fuel combustion (Mt)*	261.71	288.77	309.8	295.16	305.32	332.21	347.95	341.63	342.62	353.78	348.76	33%	1.61%	-1.42%
... of which transport CO ₂ (Mt)*	36.28	46.68	46.96	47.39	47.47	49.45	51.3	53.57	54.64	57.33	57.15	58%	2.56%	-0.31%
Transport* as a percentage of total	13.9%	16.2%	15.2%	16.1%	15.5%	14.9%	14.7%	15.7%	15.9%	16.2%	16.4%
Road (Mt)	27.93	32.3	33.25	33.64	34.29	35.63	38.32	39.57	40.83	42.79	42.3	51%	2.33%	-1.15%
Rail (Mt)	0.18	0.8	0.57	0.55	0.64	0.6	0.53	0.39	0.43	0.47	0.48	167%	5.60%	2.13%
Domestic Aviation (Mt)	1.13	1.69	1.82	1.88	2.01	2.32	2.6	2.88	2.87	3.04	3.02	167%	5.61%	-0.66%
International Aviation (Mt)	1.09	1.58	2.79	2.6	2.57	2.53	2.28	2.21	2.44	2.55	2.6	139%	4.95%	1.96%
Domestic Navigation (Mt)	0	0	0	0	0	0	0	0	0	0	0
International Shipping (Mt)	5.95	10.28	8.51	8.71	7.96	8.37	7.56	8.52	8.07	8.48	8.74	47%	2.16%	3.07%
Other Transport (Mt)	0	0.02	0.02	0	0	0	0	0	0	0	0
GHG Emissions														
UNFCCC GHG emissions (Mt CO ₂ eq.)*
UNFCCC GHG fuel combustion (Mt CO ₂ eq.)*
... of which transport GHG (Mt CO ₂ eq.)*
Road (Mt)
International Aviation (Mt)
International Shipping (Mt)

* includes emissions from international aviation and international maritime bunkers - there is no internationally agreed allocation mechanism for these and totals here are indicative of the scale of these emissions, not of their national "ownership" ** available yrs.