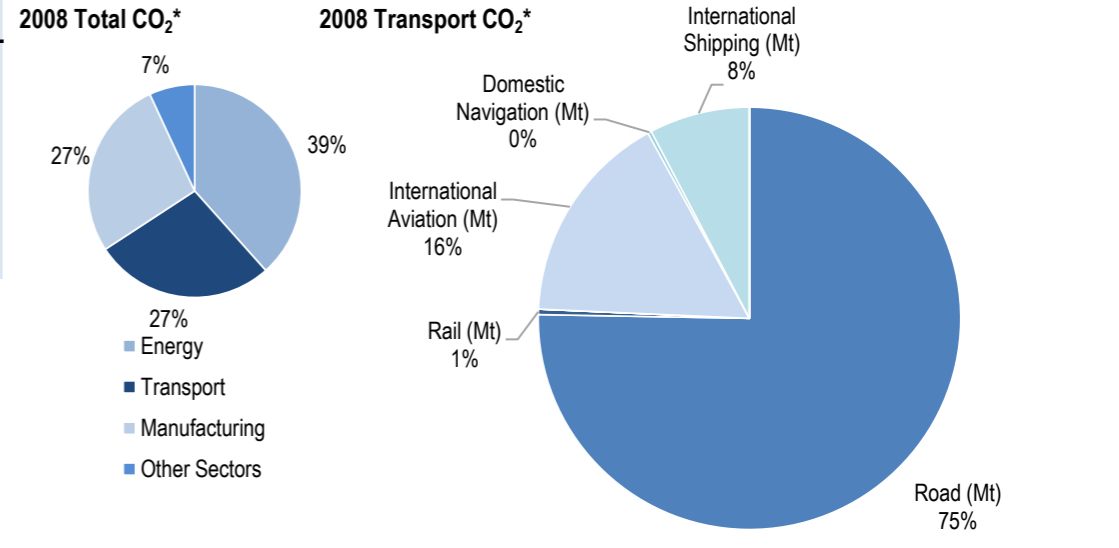
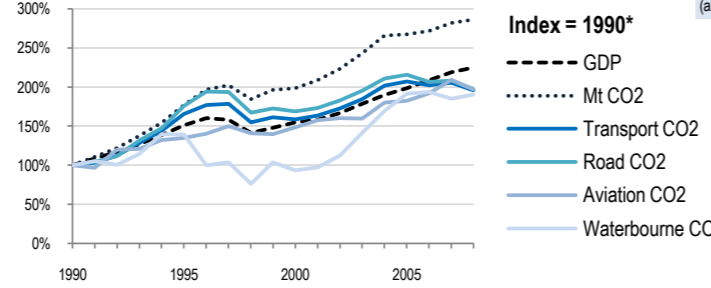
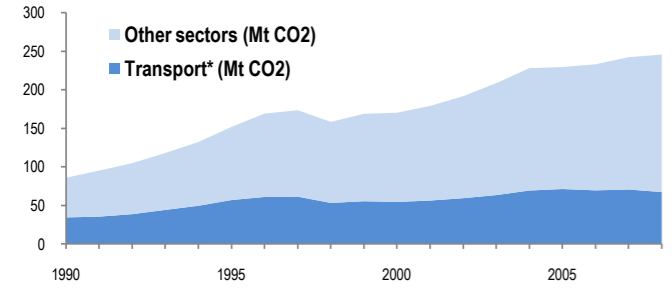


Thailand



Change 1990-2008*	Mt (axis set -50%,100%)	2008	T/capita	2008, Kg/\$2000 PPP	2008	2007-2008	(%Mt)
Total CO ₂	186%	245.63	141%	3.64	27%	0.44	1.4%
Transport CO ₂	96%	67.28	64%	1.00	-13%	0.12	-4.7%
Road CO ₂	97%	50.65	66%	0.75	-12%	0.09	-5.2%
Aviation CO ₂	97%	10.98	65%	0.16	-12%	0.02	-5.9%
Waterbourne CO ₂	90%	5.37	60%	0.08	-15%	0.01	2.9%



Transport and the Economy	1990	1995	2000	2001	2002	2003	2004	2005	2006	2007	2008	1990-2008	%/year**	% 2007-2008
Population (millions)	56.67	60.14	62.35	62.99	63.73	64.52	65.28	65.95	66.51	66.98	67.39	19%	0.97%	0.61%
GDP PPP (billion 2000 US dollars)	251.14	379.77	388.38	396.79	417.89	447.73	476.14	498.06	524.09	549.91	564.09	125%	4.60%	2.58%
Road passenger km (million pkm)
Road and Rail freight tkm (million tkm)
Road pkm/capita
Road and Rail freight tkm/\$ gdp
Passenger cars per 1000 inhabitants	14	25	43	46	52	54	10.94%	..
CO2 Emissions														
IEA CO ₂ from fuel combustion (Mt)*	85.87	151.79	170.19	178.99	191.63	208.65	227.97	229.46	233.05	242.25	245.63	186%	6.01%	1.40%
... of which transport CO ₂ (Mt)*	34.4	56.92	54.48	56.28	59.34	63.36	69.27	71.22	69.5	70.59	67.28	96%	3.80%	-4.69%
Transport* as a percentage of total	40.1%	37.5%	32.0%	31.4%	31.0%	30.4%	30.4%	31.0%	29.8%	29.1%	27.4%
Road (Mt)	25.67	45.13	43.27	44.43	46.87	50.14	54.15	55.36	53.04	53.41	50.65	97%	3.85%	-5.17%
Rail (Mt)	0.32	0.35	0.3	0.31	0.36	0.33	0.29	0.3	0.3	0.29	0.28	-13%	-0.74%	-3.45%
Domestic Aviation (Mt)	0	0	0	0	0	0	0	0	0	0	0
International Aviation (Mt)	5.58	7.51	8.27	8.8	8.94	8.9	10.05	10.17	10.7	11.67	10.98	97%	3.83%	-5.91%
Domestic Navigation (Mt)	1.12	0.91	0.18	0.18	0.2	0.22	0.25	0.21	0.2	0.16	0.19	-83%	-9.39%	18.75%
International Shipping (Mt)	1.70	3.02	2.46	2.56	2.97	3.77	4.53	5.18	5.26	5.06	5.18	205%	6.39%	2.37%
Other Transport (Mt)	0	0	0	0	0	0	0	0	0	0	0
GHG Emissions														
UNFCCC GHG emissions (Mt CO ₂ eq.)*
UNFCCC GHG fuel combustion (Mt CO ₂ eq.)*
... of which transport GHG (Mt CO ₂ eq.)*
Road (Mt)
International Aviation (Mt)
International Shipping (Mt)

* includes emissions from international aviation and international maritime bunkers - there is no internationally agreed allocation mechanism for these and totals here are indicative of the scale of these emissions, not of their national "ownership" ** available yrs.