


ITF Transport Outlook 2017

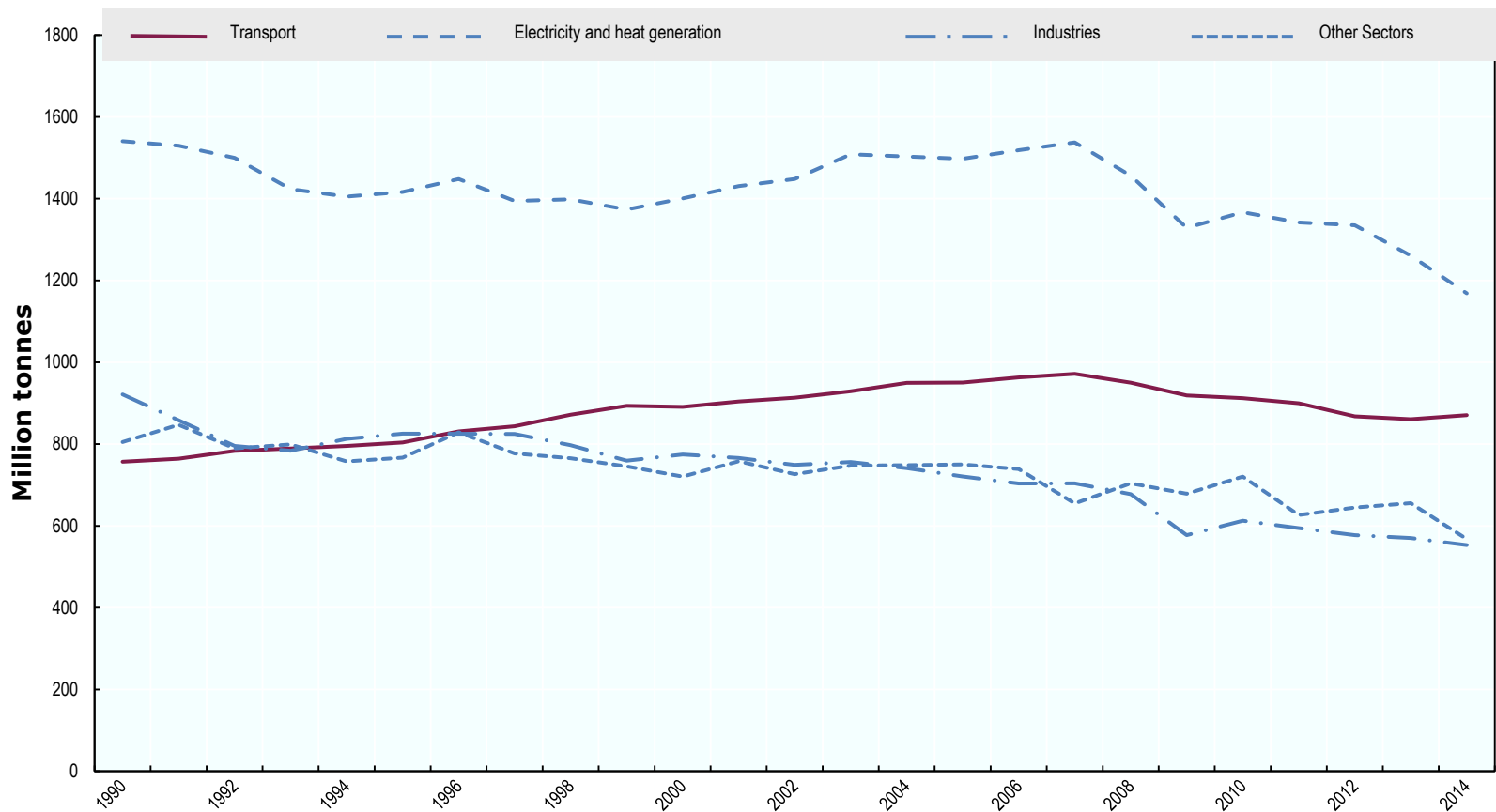
Vincent Benezech

Statistics Meeting, March 2017

What's new in the 2017 edition

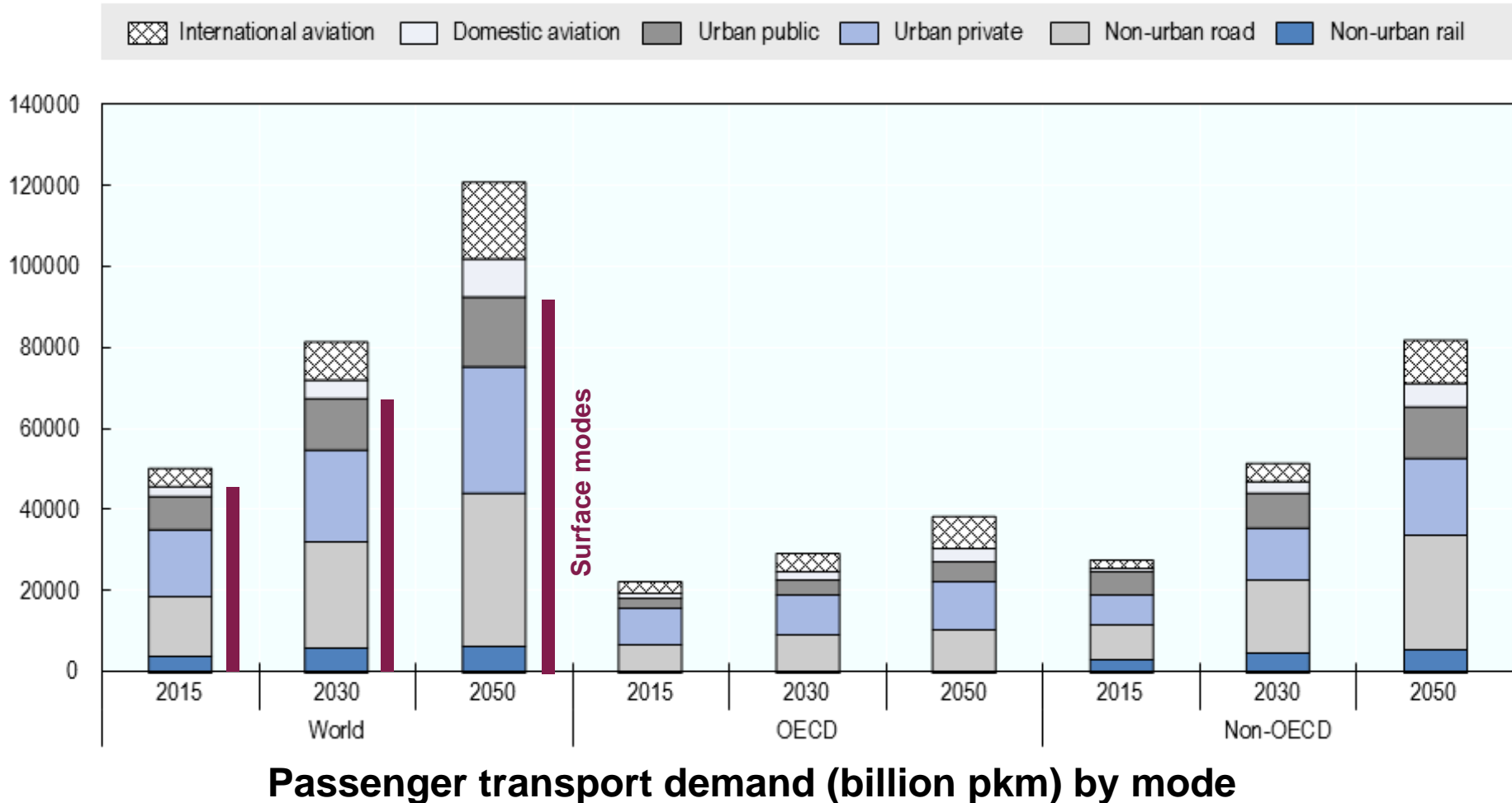
- Covering all modes of transport:
 - Global model for mobility in cities (1692 cities above 300 000 inhabitants)
 - International passenger aviation
 - Collecting results from all the ITF models:
 - Global passenger and freight transport demand by mode
 - Global CO₂ emissions by sector, under two scenarios
 - Baseline
 - Low-carbon
 - Accessibility: in cities, by air
 - Capacity needs for freight transport
- 

Historical emissions



CO₂ emissions by sector for Europe

Outlook for passenger demand



Passenger transport demand (billion pkm) by mode



Urban vs non-urban passenger travel

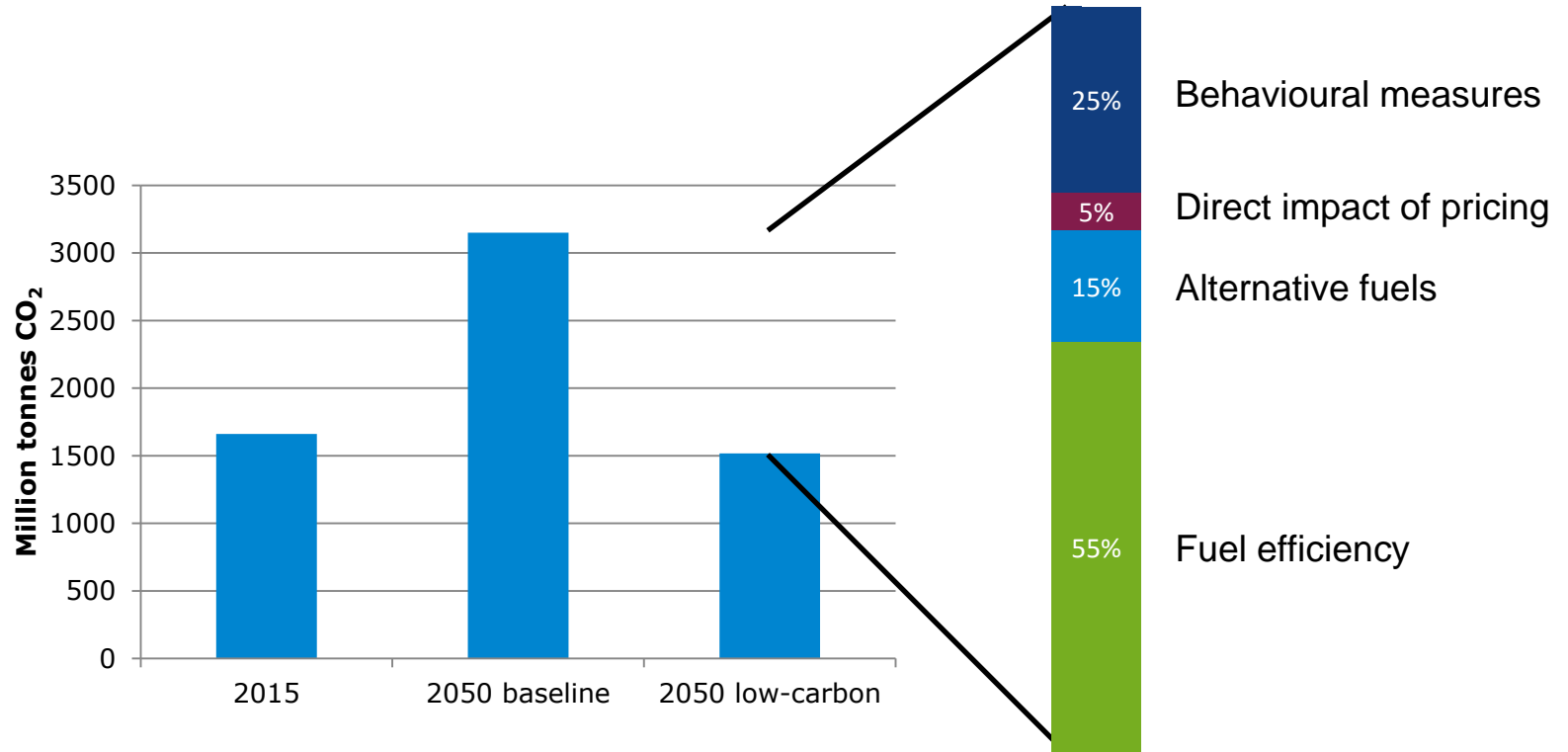
- Non-urban travel is less visible in the transport policy agenda
- But far from insignificant

	Motorised pkms	CO ₂ emissions
Urban	+95%	+37%
Domestic non-urban	+157%	+83%


**Growth in motorised pkms and CO₂ emissions
between 2015 and 2050**



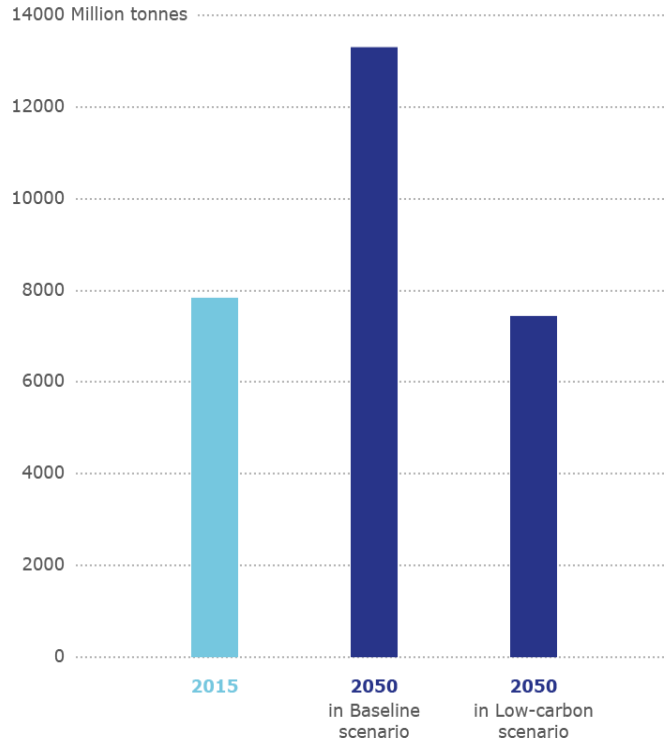
Emissions in cities



Road freight

- Operational measures can represent more than 50% of fuel savings/CO₂ emissions by 2050
 - Routing optimisation
 - Asset sharing
 - Relaxing of delivery window
 - Alternative fuels could become predominant in some contexts
 - Electric deliveries in urban areas
 - Biofuels or LNG for long-distance trucking
 - Realistically, the sector will rely on fuel efficiency in the medium/long term
- 

Conclusion



Currently foreseeable policies to mitigate transport CO₂ are not sufficient to achieve climate ambitions

- Transport will emit c. 7.5 giga-tonnes of CO₂ in 2050, roughly the same as in 2015
- Accelerated innovation and radical policy choices on issues such as shared mobility, changes in supply chains, new transport modes are required.



Thank you



ITF Transport Outlook 2017



Intergovernmental Organisation

linked to OECD
57 member countries

Think Tank

Policy analysis and research
Data and statistics

Annual Summit

Forum for Ministers, industry,
all transport stakeholders



Global passenger demand

