

# The Working Party on Transport Statistics (WP.6) in 2017 and 2018

Alex Blackburn  
Secretary, Working Party on Transport Statistics (WP.6)

*Presentation to International Transport Forum  
Paris, 25-26 April 2018*



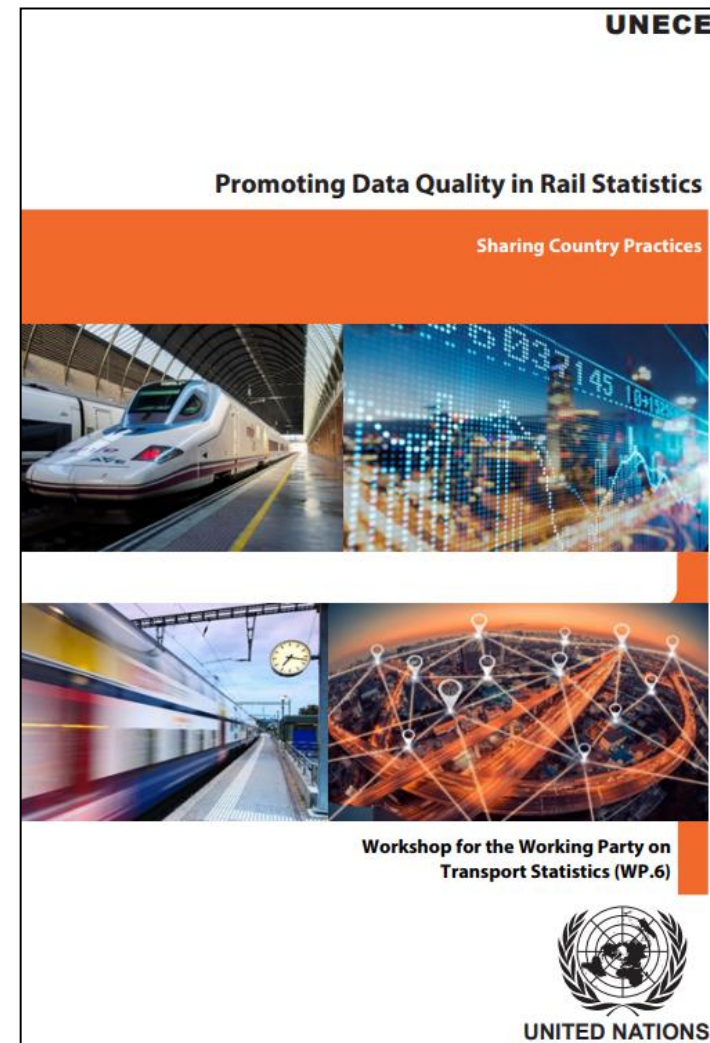
# Overview

- WP.6 2017
- Revision of the Glossary
- Publications and Data Improvements
- Achieving the Sustainable Development Goals
- Visualising E-ROAD traffic
- WP.6, 12-14 June 2018



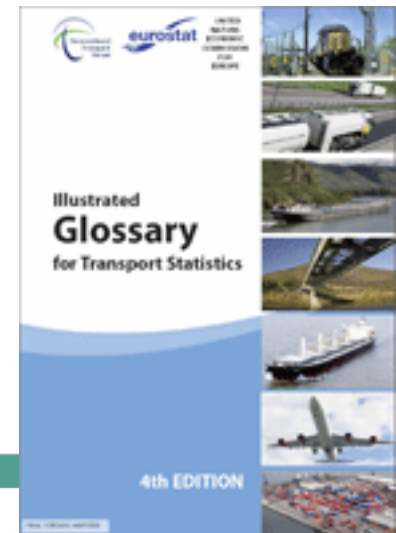
# WP.6 Meeting, June 2017

- Workshop on rail statistics:
  - Data collection after market liberalization
  - Innovative collection methods
  - Uses of data as a leading economic indicator
  - Details at [tiny.cc/UNECE-Rail-Stats](http://tiny.cc/UNECE-Rail-Stats)
- Glossary Group of Experts established
- Census
- Road safety, SDGs, rail accidents, accidents at level crossings

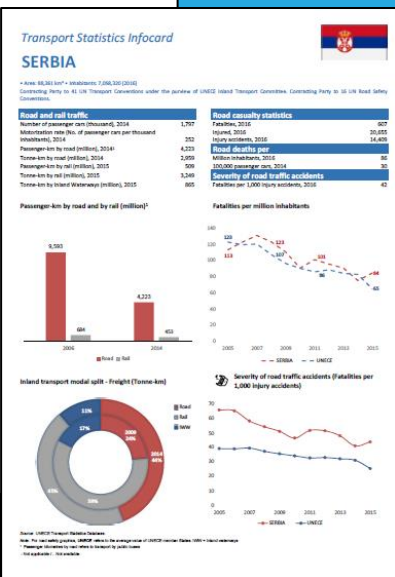
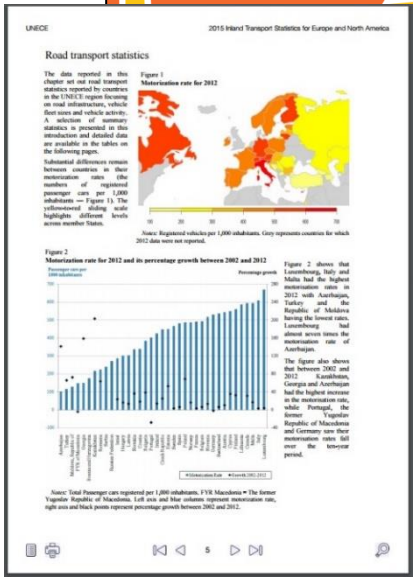
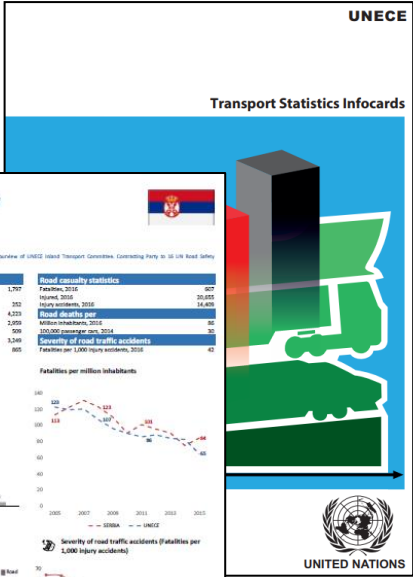
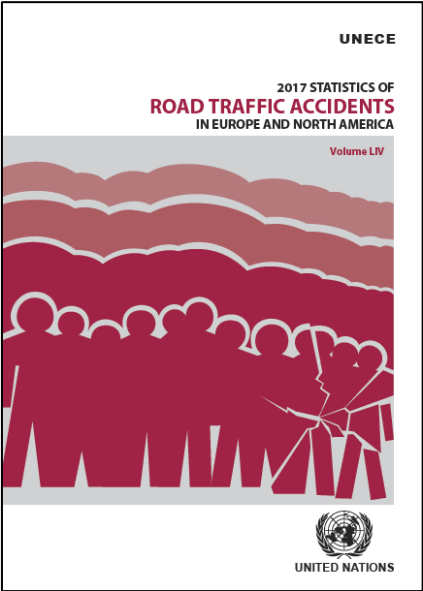
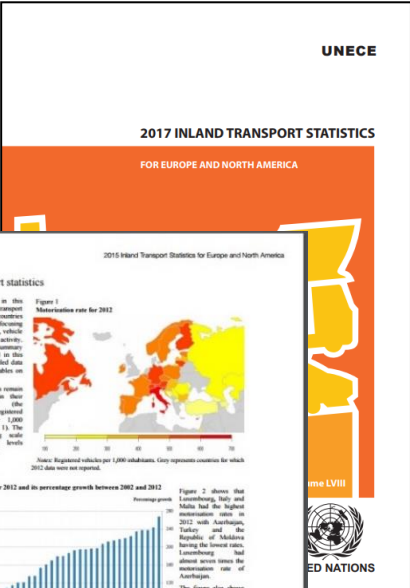


# Updating Transport Statistics Glossary

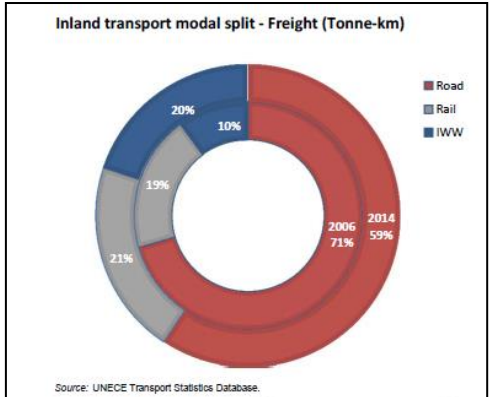
- Informal Group of Experts established under WP.6; experts from 16 countries & many international organisations, led by UNECE, Eurostat and ITF.
- **A country-led process.** Coordinators: Sweden (Road); Canada (Rail); Norway (Maritime); Spain (Air)
- Meeting at ITF in March discussed all proposed changes
- Draft update to be presented and debated at WP.6 in June



- **Inland Transport Statistics:** Published June 2017
- **Road Accident Statistics:** Published November 2017
- **Infocards:** produced for the ITC

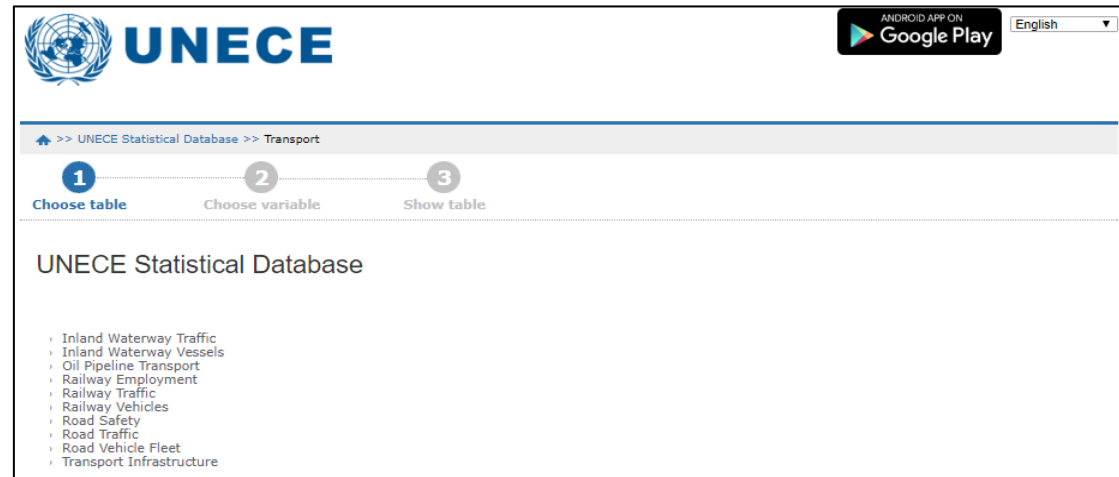


Road deaths per	
Million inhabitants	91
100,000 passenger cars	22



# Improved Data Dissemination

- Database now updated 3 times a year, latest January 2018
- Many more indicators added, and dissemination cubes simplified (Aug 2017)
- **Renewed outreach to all countries on data quality**
- New bus and coach dataset
- New rail accident dataset



The screenshot shows the UNECE Statistical Database website. At the top left is the UNECE logo. To the right is a banner for the Android app on Google Play and a language dropdown menu set to English. Below the header is a navigation path: >> UNECE Statistical Database >> Transport. A progress indicator shows three steps: 1. Choose table (active), 2. Choose variable, and 3. Show table. The main content area is titled 'UNECE Statistical Database' and lists several categories with expandable arrows: Inland Waterway Traffic, Inland Waterway Vessels, Oil Pipeline Transport, Railway Employment, Railway Traffic, Railway Vehicles, Road Safety, Road Traffic, Road Vehicle Fleet, and Transport Infrastructure.

Data here: [w3.unece.org/PXWeb/en](http://w3.unece.org/PXWeb/en)



# WP.6 on SDGs

- Workshops on improving data & sharing country practices to achieve the transport SDGs.

- Montenegro                      October 2017 (Western Balkans + Moldova)
- Kazakhstan                      October 2017 (SPECA)
- Slovenia                              November 2017 (Danube Region)
- Georgia                              February 2018 (Georgia and Albania)

Details at [unece.org/trans/transport-and-the-sustainable-development-goals.html](http://unece.org/trans/transport-and-the-sustainable-development-goals.html)

- Engagement on data production & metadata for the SDG indicators, in particular 9.1.2 with ICAO and ITF. UNECE wants to see **official statistics** used where possible



3 GOOD HEALTH AND WELL-BEING



9 INDUSTRY, INNOVATION AND INFRASTRUCTURE



11 SUSTAINABLE CITIES AND COMMUNITIES





# E- Censuses

- Unique international traffic censuses, comparable data on traffic flows and infrastructure of main European roads (AGR)
- E-Road: For 2015, data received from 21 countries
- Traffic by type of vehicle, peak traffic, holiday traffic, night traffic
- Interactive map available [unece.org/trans/main/wp6/e-roads\\_maps.html](http://unece.org/trans/main/wp6/e-roads_maps.html)





# E-Road Census Map: uses

- Highlights European traffic bottlenecks
- Identifies important trade border crossings
- Used for identification of climate change infrastructure hotspots
- Road safety identification of dangerous corridors
- E-Rail: map to come (more difficult to get Shapefiles)



# WP.6 Meeting, 12-14 June 2018

- Workshop on **Inland Waterway statistics**
  - Innovative collection methods (AIS, others) and visualization
  - IWW data in context of Intermodal transport (e.g. tracking of individual containers)
  - Uses of data
- Glossary
  - Presentation of additions and amendments
  - Opportunity for round of final comments before publication
- Censuses and transport visualization
- Bus and coach statistics
- Transport safety
- SDGs



# Thanks. Questions?

**Alex Blackburn**

**[BlackburnA@un.org](mailto:BlackburnA@un.org)**

