



Schweizerische Eidgenossenschaft  
Confédération suisse  
Confederazione Svizzera  
Confederaziun svizra

Federal Department of the Environment, Transport,  
Energy and Communications DETEC  
**Federal Office for Spatial Development ARE**  
Fundamental Policy Questions

# Transport Outlook 2050

## Switzerland

11<sup>th</sup> ITF TRANSPORT STATISTICS MEETING, 14 April 2025

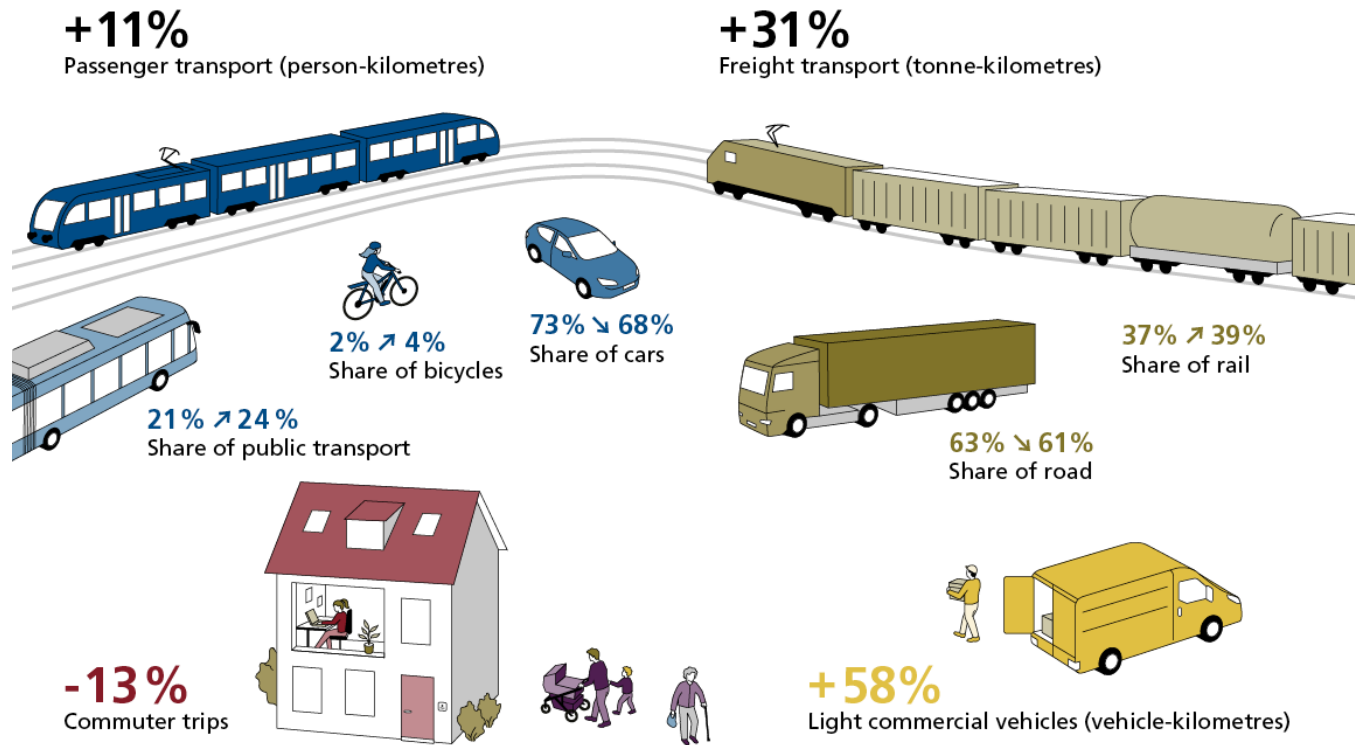


# An important piece of work

- Used by planners
  - Confederation: transport policy and spatial planning, energy outlook
  - Cantons and municipalities
  - Private industry and research community
- Supervised by
  - The Federal Department (DETEC)
  - An advisory group as well as a sounding board (associations, interest groups and other stakeholders)



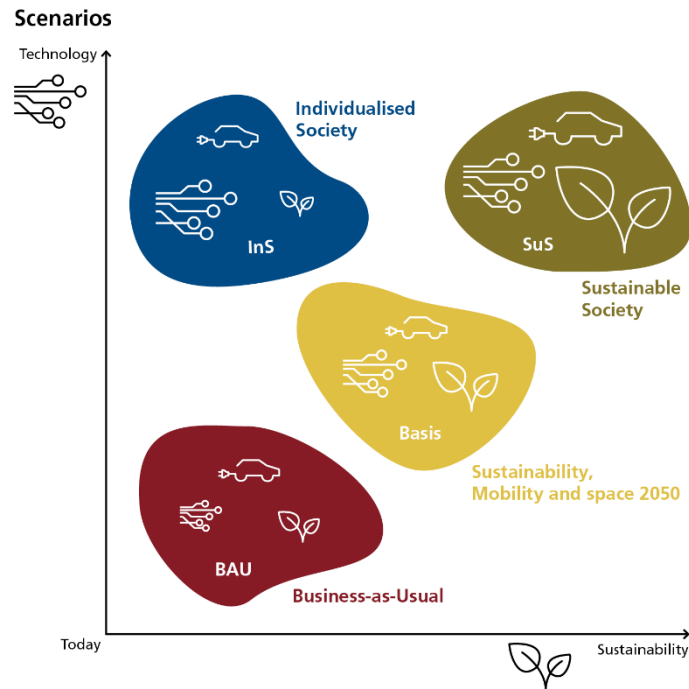
# Switzerland: 2017 – 2050





# «If – then» scenarios

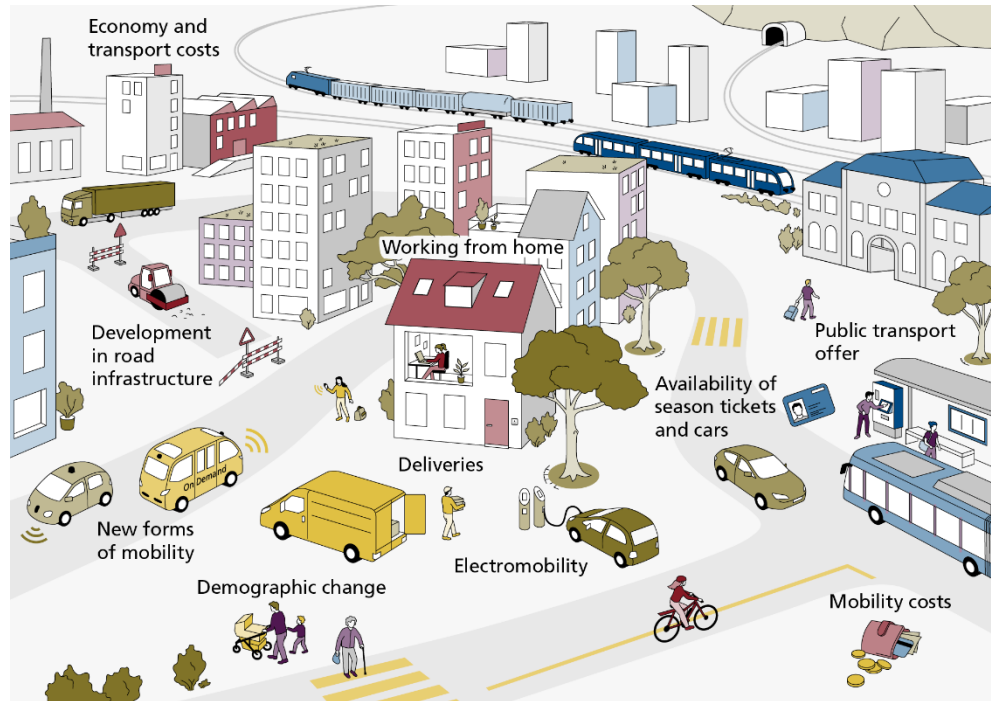
- Business-as-Usual:
  - Continuation of present situation
- Basis:
  - BaU plus a set of transport policy measures
  - Relevant for infrastructure planning
- No direct targets assumed (such as a desired modal-split)





# Available data and assumptions

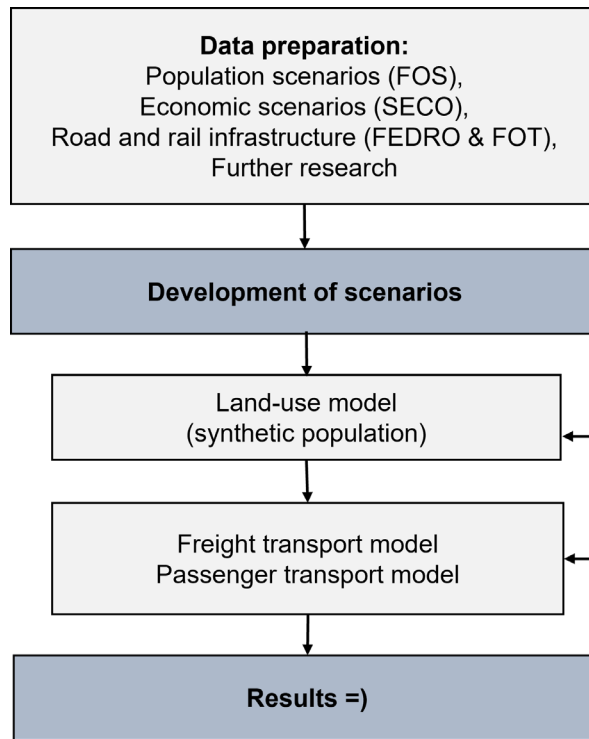
- Official data:
  - Microcensus Mobility and Transport
  - Population and economic growth
  - Infrastructure
  - Recent research
- Still need to make critical assumptions





# Modelling approach

- Land-use model:
  - Agent-based
- Passenger transport model:
  - Macroscopic, ~ 8'000 zones
  - Implemented in PTV Visum
- Freight transport model:
  - Regressions
  - Trip assignment in passenger transport model





# Learnings

- «Inbetween science and politics»
  - Idea: the transport outlook provides a solid instrument for transport planning and policy
  - However: discussion of assumptions and scenarios is political
  - -> fewer scenarios, and more sensitivities
- «Model complexity versus usability»
  - High model runtime (cannot link land-use and transport models currently)
  - Simpler model? Or activity-based / agent-based models?
- Updates: how often should an outlook be updated?



# Thank you for your attention!

Want more details?

<https://www.are.admin.ch/are/en/home/mobility/data/transport-outlook.html>

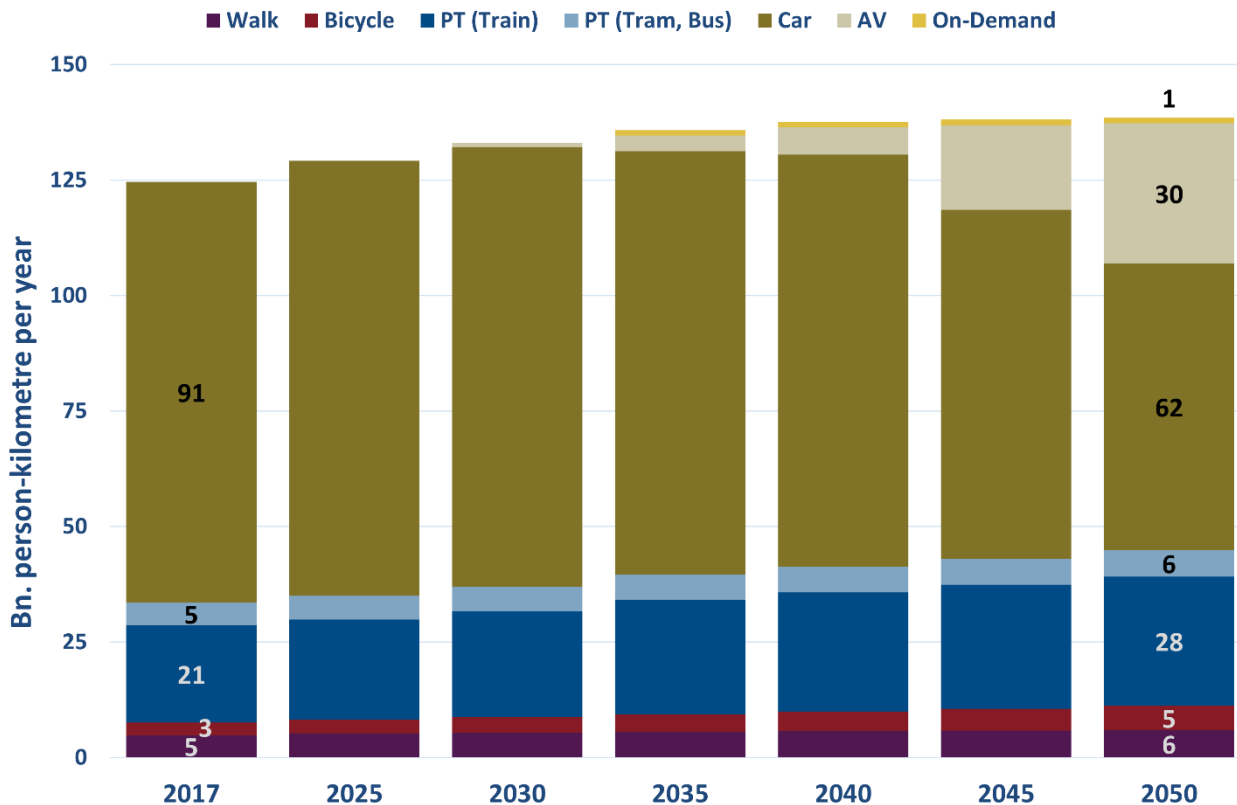
Reach out:

[thomas.schatzmann@are.admin.ch](mailto:thomas.schatzmann@are.admin.ch)



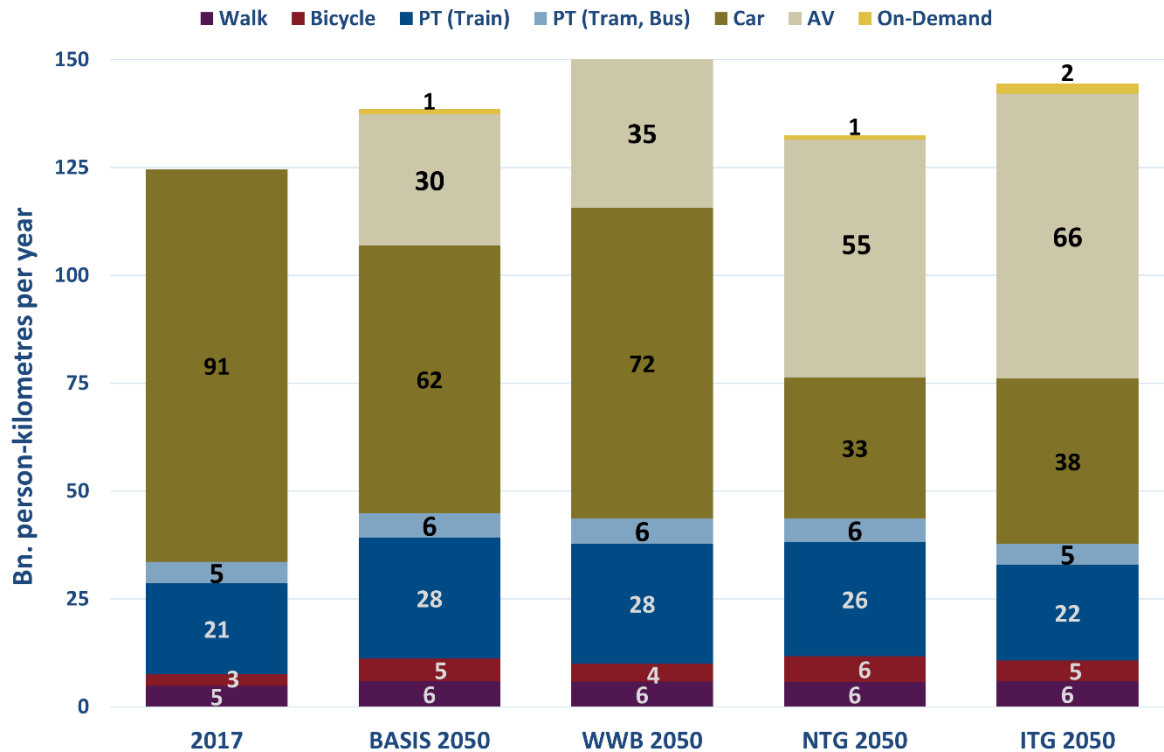


# Appendix – passenger transport





# Appendix – passenger transport 2





# Appendix – freight transport

